



T R O P H Y
PROPERTIES AND AUCTION
LAND | RECREATIONAL | RESIDENTIAL

7836 Hwy N Dardenne Prairie Commercial Land Auction

www.TrophyPA.com • (855) 573-5263 • leads@trophy.com



PROPERTY ADDRESS:
7836 Hwy N
Dardenne Prairie, MO 63368

ACRES: 1.38
COUNTY: St. Charles

AUCTION DETAILS:

3% Commission to Buyers Agents!

Bidding Ends Thursday, February 27th at 10:00AM.

This 1.38-acre (60,112.8 sq. ft.) commercial lot in Dardenne Prairie, MO, offers a prime opportunity in one of the fastest-growing areas of St. Charles County. Adjacent to the bustling Dardenne Town Square, this vacant lot is surrounded by top retailers, including Target, JC Penney, Schnucks, and Marcus Theatres, ensuring high visibility and traffic. With interstate visibility and convenient access via Hwy N, the property is ideally located for retail, office, or mixed-use development. The area features great demographics, with population growth surpassing 20% in the past decade, highlighting its incredible potential. Available as-is, where-is, this lot can be purchased individually or as part of a larger package with additional parcels available for auction. All development plans are subject to city approval, offering a flexible opportunity in a thriving market. Don't miss the chance to invest in this highly desirable location!



PRESENTED BY:

JAKE BROWN
Dir. Of Marketing/Realtor
M: (314) 602-1116
P: (855) 573-5263 x740
E: jbrown@trophy.com

Trophy Properties and Auction
640 Cepi Drive
Suite 100
Chesterfield, MO 63005

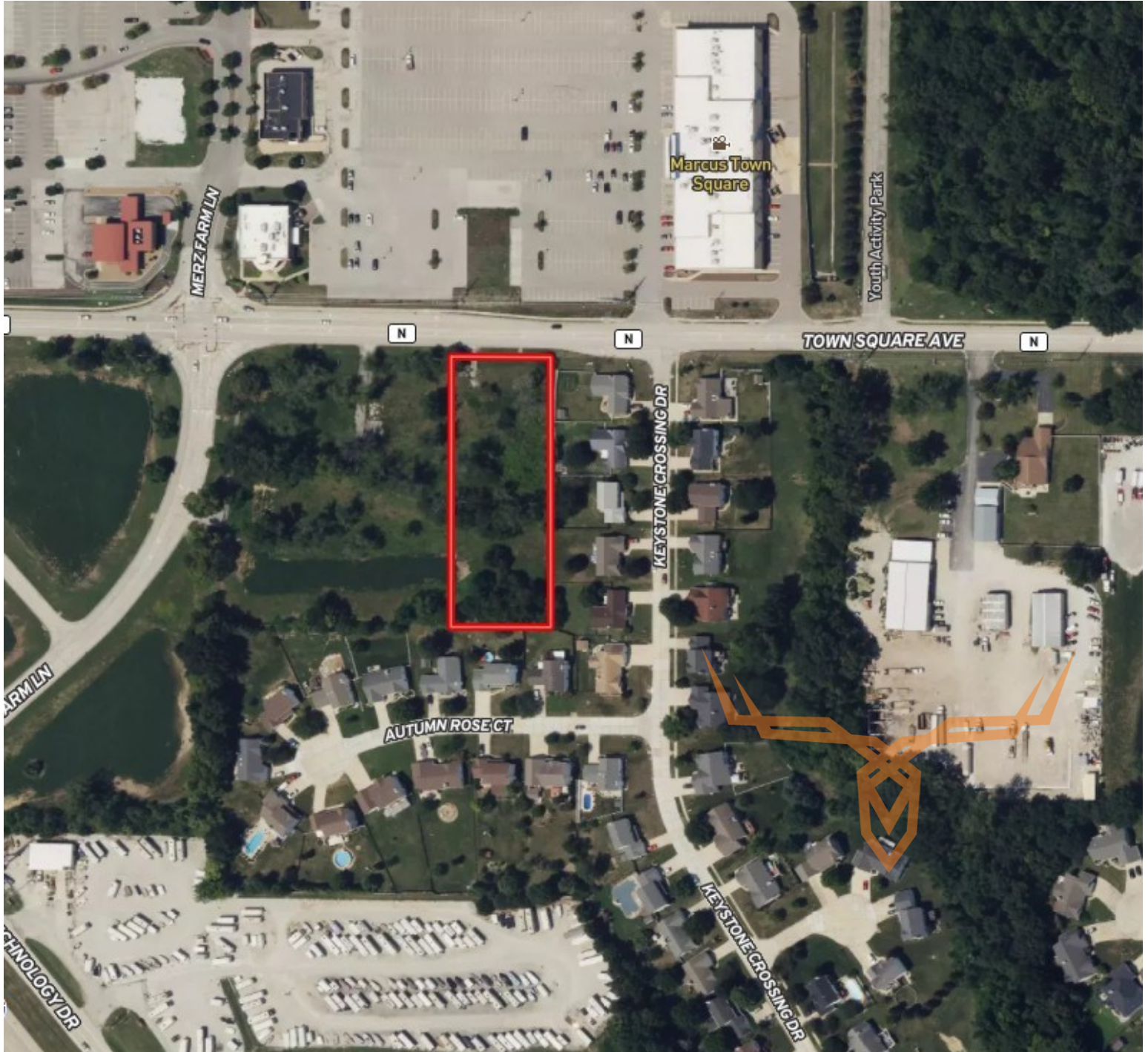
www.Trophy.com
leads@trophy.com



T R O P H Y
PROPERTIES AND AUCTION
LAND | RECREATIONAL | RESIDENTIAL

7836 Hwy N Dardenne Prairie Commercial Land Auction

www.TrophyPA.com • (855) 573-5263 • leads@trophy.com



The information is believed to be accurate; however, no liability for its accuracy, errors or omissions is assumed. All lines are drawn on maps, photographs, etc. are approximate. Buyers should verify the information to their satisfaction. There are no expressed or implied warranties pertaining to this property. Both real estate (including all improvements, if any) is being sold As Is, Where Is with NO warranties expressed or implied. Please make all inspections and have financing arranged prior to the end of bidding.