



T R O P H Y
PROPERTIES AND AUCTION
LAND | RECREATIONAL | RESIDENTIAL

Dade County Missouri Land and Home Auction - Grider Property

www.TrophyPA.com • (855) 573-5263 • leads@trophy.com



BIDDING ENDS WEDNESDAY, NOVEMBER 13TH AT 9:20AM
SEE FULL TERMS & CONDITIONS AT WWW.TROPHYPA.COM



PROPERTY ADDRESS:

67 N Dade 237
Walnut Grove, MO 65770

ACRES: 40±

COUNTY: Dade

AUCTION DETAILS:

Open House Saturday, October 26th 1PM to 3PM.

Bidding Ends Wednesday, November 13th at 9:20AM.

This enchanting 40± acre timber tract situated in a peaceful country setting just 10 minutes from the Greenfield boat ramp at Stockton Lake and only 35 minutes from Springfield, Missouri. The property boasts a spacious 3,000 sq. ft. home with four bedrooms, three bathrooms, a finished walkout basement, a covered porch, and a covered back deck, perfect for enjoying the tranquil surroundings. Additionally, there is a 30' x 40' shop with a concrete floor and 200-amp service, ideal for projects or storing recreational equipment.

The land features mature timber, partial fencing, and an abundance of wildlife, making it a great spot for hunting, hiking, or outdoor enthusiasts. With Stockton Lake just minutes away, it's a perfect location for fishing, offering access to some of Missouri's best bass, crappie, and walleye fishing. Whether you're looking for a serene retreat, a recreational haven, or a family homestead, this property offers the best of country living with endless opportunities for outdoor enjoyment.



PRESENTED BY:

WAYLON MARTIN

Land Broker

M: (417) 410-5964

P: (855) 573-5263 x712

E: wmartin@trophy.com

Trophy Properties and Auction

640 Cepi Drive

Suite 100

Chesterfield, MO 63005

www.TrophyPA.com

leads@trophy.com



T R O P H Y
PROPERTIES AND AUCTION
LAND | RECREATIONAL | RESIDENTIAL

Dade County Missouri Land and Home Auction - Grider Property

www.TrophyPA.com • (855) 573-5263 • leads@trophyPA.com

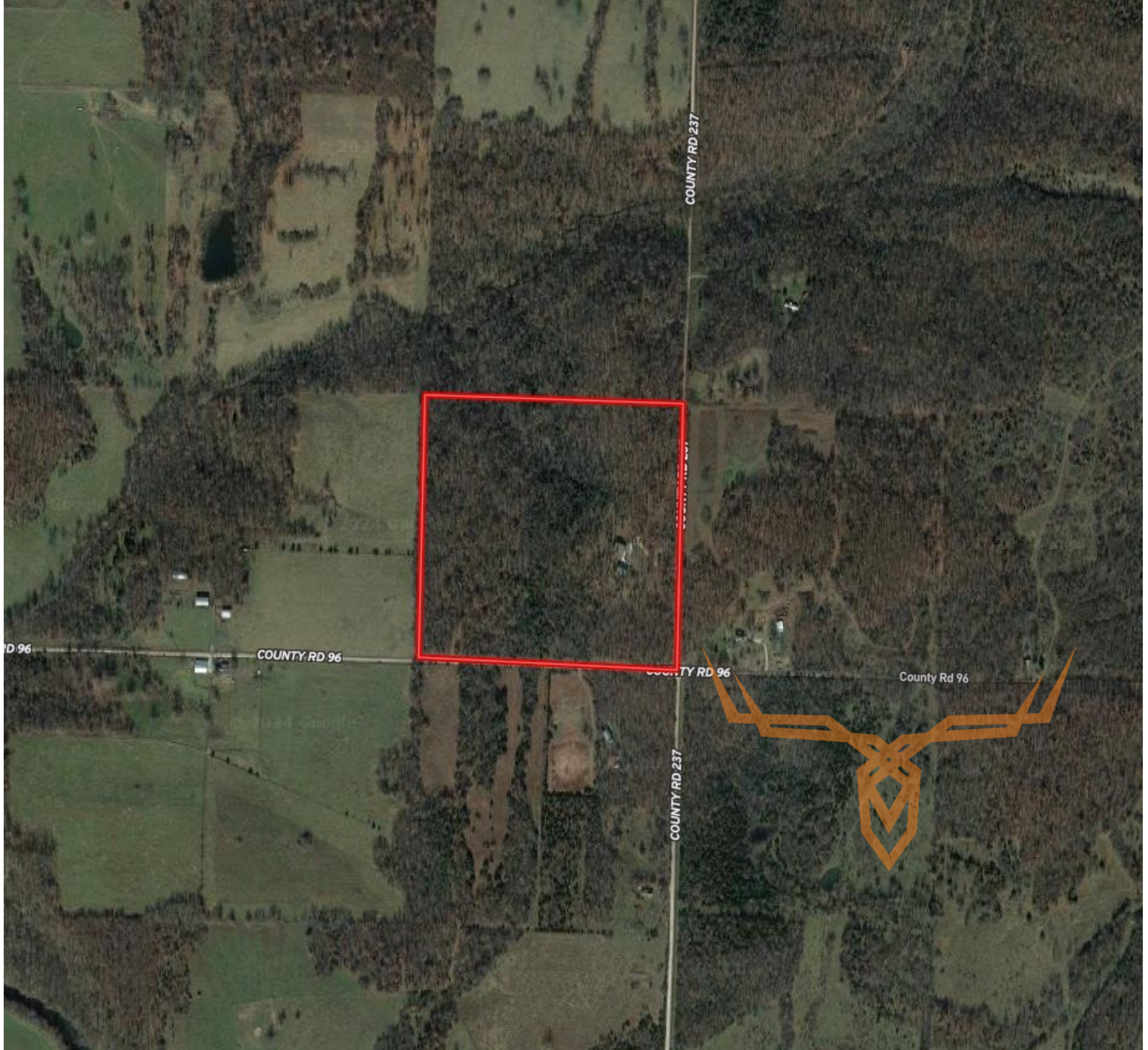




T R O P H Y
PROPERTIES AND AUCTION
LAND | RECREATIONAL | RESIDENTIAL

Dade County Missouri Land and Home Auction - Grider Property

www.TrophyPA.com • (855) 573-5263 • leads@trophyPA.com



The information is believed to be accurate; however, no liability for its accuracy, errors or omissions is assumed. All lines are drawn on maps, photographs, etc. are approximate. Buyers should verify the information to their satisfaction. There are no expressed or implied warranties pertaining to this property. Both real estate (including all improvements, if any) is being sold As Is, Where Is with NO warranties expressed or implied. Please make all inspections and have financing arranged prior to the end of bidding.