



T R O P H Y
PROPERTIES AND AUCTION
LAND | RECREATIONAL | RESIDENTIAL

Jackson County Illinois Land for Sale at Auction - Whitetail Woods

www.TrophyPA.com • (855) 573-5263 • leads@trophyapa.com



BIDDING ENDS WEDNESDAY, APRIL 16TH AT 10:00 AM
SEE FULL TERMS & CONDITIONS AT WWW.TROPHYPA.COM



PROPERTY ADDRESS:

00 Pump House Road
Murphysboro, IL 62966

ACRES: 152±

COUNTY: Jackson

AUCTION DETAILS:

Preview Day Saturday, March 29th 9AM to 11AM.

This is your chance to purchase 152± acres of upland hardwood timber that is tucked away in a great location just minutes from town. The property was recently harvested, however, there is still an abundant number of white oaks on the property, and the resulting thick understory provides excellent habitat for deer and turkey. Multiple food plots are scattered throughout the property and are accessed via an established trail system. The property is accessed along a gravel drive off of Pump House Road and is close to the Shawnee National Forest and Cedar Lake which provides additional recreational opportunities.

The property is just 5 minutes outside of Carbondale, IL, one hour from Cape Girardeau, MO, and less than two hours from Saint Louis, MO.

Property Highlights:

- 152± acres
- Upland hardwood timber
- Loaded with deer and turkey
- Multiple food plots
- Established trail system
- Located in Jackson County, Illinois



PRESENTED BY:

ERIC HOLZMUELLER, PhD.

Land & Timber Specialist

M: (608) 713-0034

P: (855) 573-5263 x705

E: eholzmuelle@trophyapa.com

Trophy Properties and Auction

640 Cepi Drive

Suite 100

Chesterfield, MO 63005

www.Trophyapa.com

leads@trophyapa.com



T R O P H Y
PROPERTIES AND AUCTION
LAND | RECREATIONAL | RESIDENTIAL

Jackson County Illinois Land for Sale at Auction - Whitetail Woods

www.TrophyPA.com • (855) 573-5263 • leads@trophyapa.com

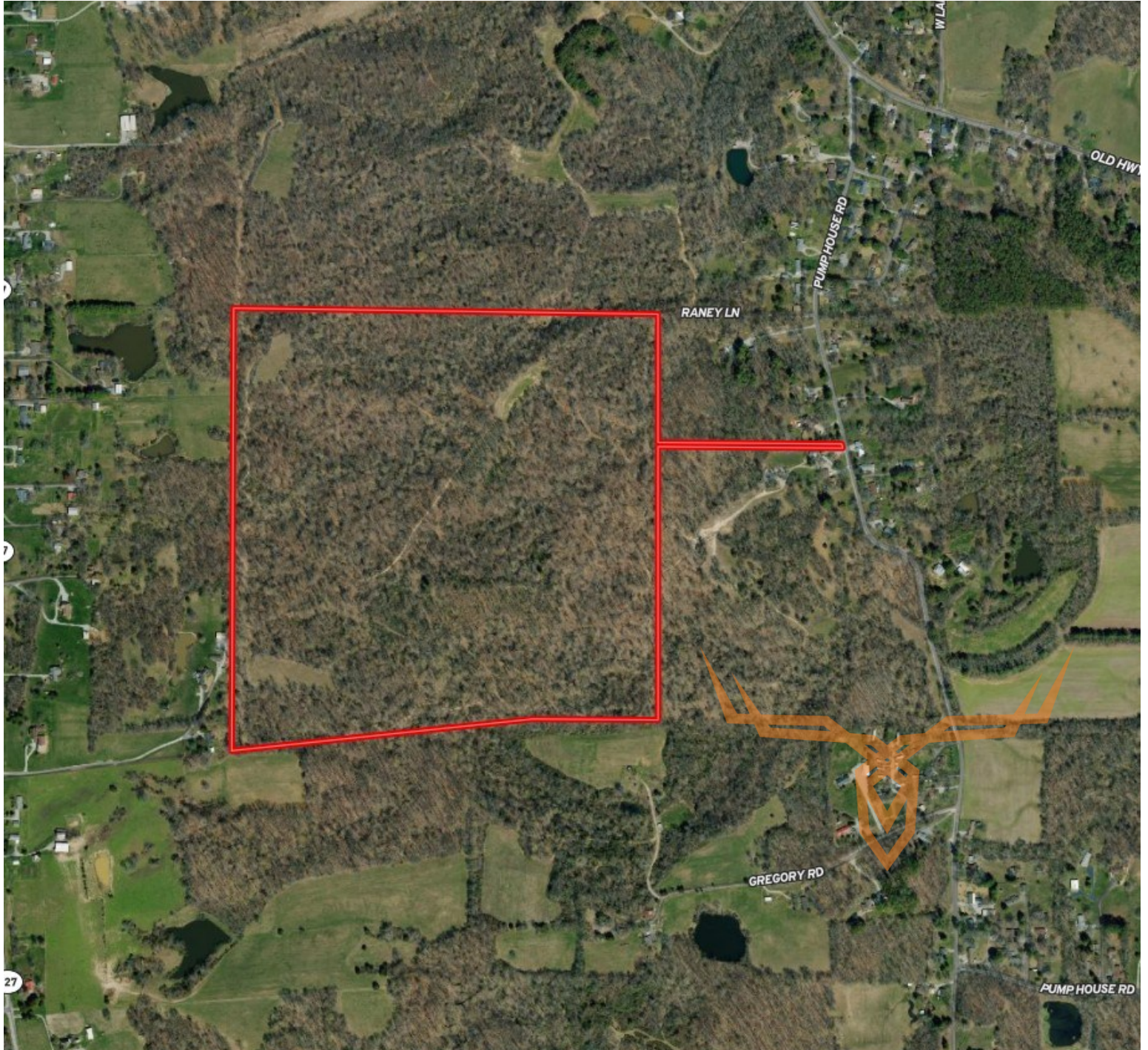




T R O P H Y
PROPERTIES AND AUCTION
LAND | RECREATIONAL | RESIDENTIAL

Jackson County Illinois Land for Sale at Auction - Whitetail Woods

www.TrophyPA.com • (855) 573-5263 • leads@trophyPA.com



The information is believed to be accurate; however, no liability for its accuracy, errors or omissions is assumed. All lines are drawn on maps, photographs, etc. are approximate. Buyers should verify the information to their satisfaction. There are no expressed or implied warranties pertaining to this property. Both real estate (including all improvements, if any) is being sold As Is, Where Is with NO warranties expressed or implied. Please make all inspections and have financing arranged prior to the end of bidding.