



Jefferson County Missouri Land & Home for Sale at Auction - Queen Gated Estate

www.TrophyPA.com • (855) 573-5263 • leads@trophyapa.com



BIDDING ENDS THURSDAY, OCTOBER 31ST AT 10:00 AM
SEE FULL TERMS & CONDITIONS AT WWW.TROPHYPA.COM

PROPERTY ADDRESS:

4603 US Hwy 67
DeSoto, MO 63020

ACRES: 135.8

COUNTY: Jefferson

AUCTION DETAILS:

Open House Saturday, October 12th 9AM to Noon.

These 135.8 gently rolling surveyed acres offered in 3 tracts, are conveniently located on Hwy 67 only 6 miles from DeSoto and within 45 minutes of Downtown St. Louis. This property features a 3,814 sq. ft. 2 story home, inground pool, shower house, detached 3 car garage with a game room upstairs, 2 gazebos, large metal equipment shed, private lake, McMullen Branch creek, grasslands and woods. Beautiful home and property for your next primary residence or a rural retreat. If you are looking for your dream home or recreational property close to St. Louis, make sure to give the Queen Gated Estate a look!

Tract 1: 33.95 surveyed acres with gated access off of Hwy 67. 3,814 sq. ft. 2 story home featuring, 4 bedrooms, 4 bathrooms, 2 half baths, home office, sunroom, screened porch, finished walkout basement with a bar, game room, and a workout room. Step outside to a large inground pool with a diving board and a shower house with two bathrooms and storage room. Three car detached garage with a half bath downstairs and a game room with a wet bar and another half bath upstairs. Just behind the house is a 1.5± acre lake with a fountain and a gazebo, as well as McMullen Branch creek with year round water on the south end of the tract. There is also a large metal shed to hold all of our equipment and toys. Great primary residence or rural retreat!

Tract 2: 62.96 surveyed acres with access off of Long Rd. Great mix of woods and grasslands with McMullen Branch meandering across the south end of the tract. There's a metal loafing shed in the south east corner, great for livestock and storage. Excellent homesites, hunting and recreation.

Tract 3: 38.89 surveyed acres with access off Hwy 67 and an easement off of Hasse Lane. This wooded tract consists of hardwoods and cedar thickets with a small clearing. Excellent homesite, hunting and recreation



PRESENTED BY:

JASON CHINN

Land & Home Specialist

M: (573) 514-9368

P: (855) 573-5263 x708

E: jchinn@trophyapa.com

ANTHONY POZZI

Marketing Coordinator/Realtor

M: (636) 295-5302

P: (855) 573-5263 x733

E: apozzi@trophyapa.com

Trophy Properties and Auction

640 Cepi Drive, Suite 100

Chesterfield, MO 63005

www.Trophyapa.com

leads@trophyapa.com

Jefferson County Missouri Land & Home for Sale at Auction - Queen Gated Estate

www.TrophyPA.com • (855) 573-5263 • leads@trophyPA.com





Jefferson County Missouri Land & Home for Sale at Auction - Queen Gated Estate

T R O P H Y
PROPERTIES AND AUCTION
LAND | RECREATIONAL | RESIDENTIAL

www.TrophyPA.com • (855) 573-5263 • leads@trophyPA.com

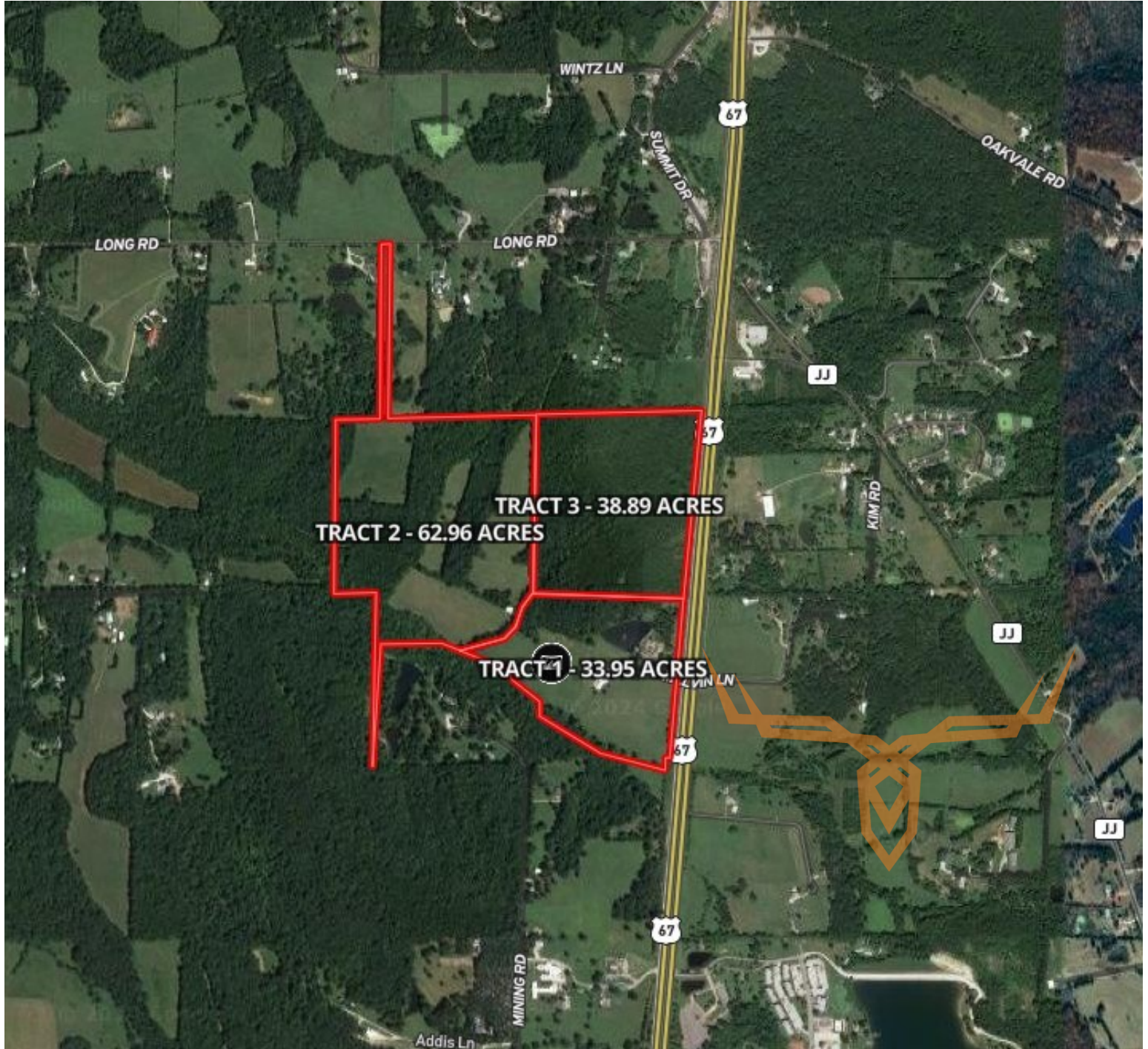




Jefferson County Missouri Land & Home for Sale at Auction - Queen Gated Estate

T R O P H Y
PROPERTIES AND AUCTION
LAND | RECREATIONAL | RESIDENTIAL

www.TrophyPA.com • (855) 573-5263 • leads@trohypa.com



The information is believed to be accurate; however, no liability for its accuracy, errors or omissions is assumed. All lines are drawn on maps, photographs, etc. are approximate. Buyers should verify the information to their satisfaction. There are no expressed or implied warranties pertaining to this property. Both real estate (including all improvements, if any) is being sold As Is, Where Is with NO warranties expressed or implied. Please make all inspections and have financing arranged prior to the end of bidding.