



# Lewis County Missouri Land for Sale at Auction - Ann Childers Wenneker Estate

**T R O P H Y**  
PROPERTIES AND AUCTION  
LAND | RECREATIONAL | RESIDENTIAL

www.TrophyPA.com • (855) 573-5263 • leads@trophyapa.com



**PROPERTY ADDRESS:**  
00 Hwy C  
La Grange, MO 63448

**ACRES:** 170.4  
**COUNTY:** Lewis

## AUCTION DETAILS:

**Preview Day Saturday, November 9th 9AM to 11AM.**

**Bidding Ends Thursday, November 21st at 10AM.**

Just outside of La Grange is this highly productive row crop farm. Farm offers some of the best soils in Lewis County. Approximately 15 minutes from Quincy. This farm has something for everyone with the Blacktop frontage, build sites, 1± acre lake, and great tillable.

**Tract 1:** 35.3 acres with Highway C frontage on the South border, Oleander Avenue on the East side and 31.12 Tillable FSA Acres. Soils are mostly Kilwinning and Armstrong. Electric and Rural Water along the South and East borders.

**Tract 2:** 67.2 acres - over 95% tillable tract with nearly all Putnam and Kilwinning Silt Loams. FSA indicates 64.59 tillable acres. Soils are nearly all Putnam and Kilwinning. A spectacular tillable tract. One of the better ones in the county without question. Electric and Rural Water along the East border.

**Tract 3:** 42.7 acres - great tillable tract with 40.46 FSA tillable acres. This farm is over 95% tillable. Soils include Putnam and Kilwinning. Another great tillable tract! Electric and Rural Water along the East border.



## PRESENTED BY:

**MIKE SHARPE**  
Land Specialist

M: (573) 721-0944

P: (855) 573-5263 x753

E: msharpe@trophyapa.com

**Trophy Properties and Auction**  
640 Cepi Drive  
Suite 100  
Chesterfield, MO 63005

www.Trophyapa.com  
leads@trophyapa.com





# Lewis County Missouri Land for Sale at Auction - Ann Childers Wenneker Estate

**T R O P H Y**  
PROPERTIES AND AUCTION  
LAND | RECREATIONAL | RESIDENTIAL

[www.TrophyPA.com](http://www.TrophyPA.com) • (855) 573-5263 • [leads@trophy.com](mailto:leads@trophy.com)

**Tract 4:** 25.2 acres - excellent build site with 15.88 FSA acres plus some additional open acreage. Great spot to build overlooking the 1+ acre lake. Electric and Rural Water along the East border.



The information is believed to be accurate; however, no liability for its accuracy, errors or omissions is assumed. All lines are drawn on maps, photographs, etc. are approximate. Buyers should verify the information to their satisfaction. There are no expressed or implied warranties pertaining to this property. Both real estate (including all improvements, if any) is being sold As Is, Where Is with NO warranties expressed or implied. Please make all inspections and have financing arranged prior to the end of bidding.

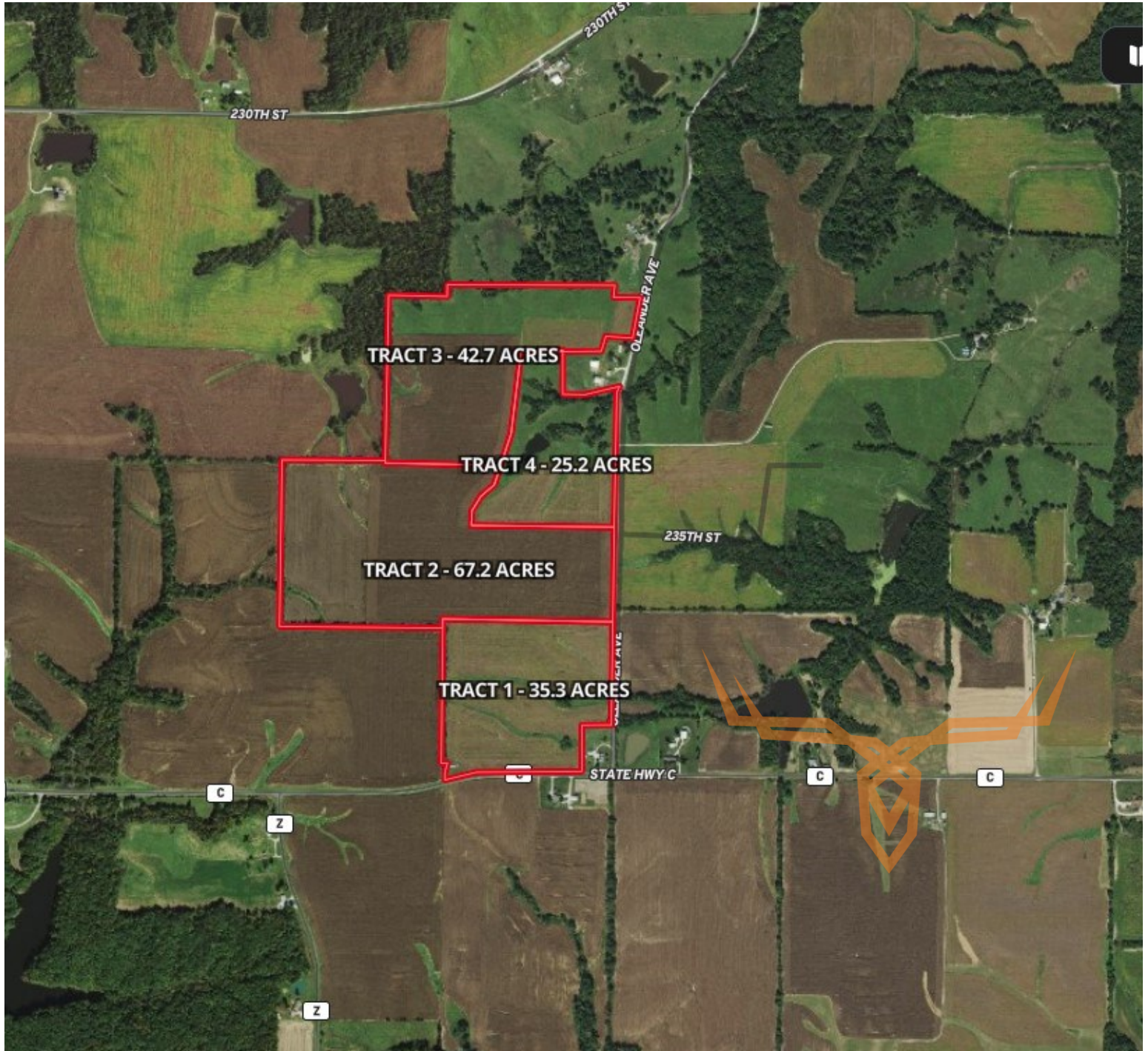




# Lewis County Missouri Land for Sale at Auction - Ann Childers Wenneker Estate

**T R O P H Y**  
PROPERTIES AND AUCTION  
LAND | RECREATIONAL | RESIDENTIAL

[www.TrophyPA.com](http://www.TrophyPA.com) • (855) 573-5263 • [leads@trophyPA.com](mailto:leads@trophyPA.com)



The information is believed to be accurate; however, no liability for its accuracy, errors or omissions is assumed. All lines are drawn on maps, photographs, etc. are approximate. Buyers should verify the information to their satisfaction. There are no expressed or implied warranties pertaining to this property. Both real estate (including all improvements, if any) is being sold As Is, Where Is with NO warranties expressed or implied. Please make all inspections and have financing arranged prior to the end of bidding.