



**T R O P H Y**  
PROPERTIES AND AUCTION  
LAND | RECREATIONAL | RESIDENTIAL

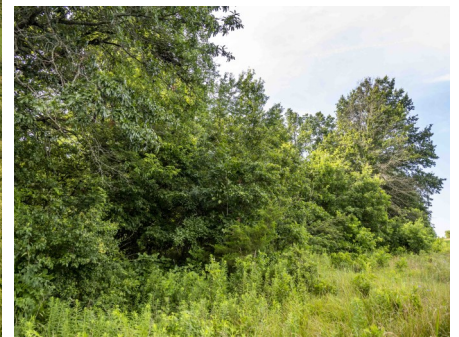
# Monroe County Missouri Land for Sale at Auction

## Blackwell Farm

[www.TrophyPA.com](http://www.TrophyPA.com) • (855) 573-5263 • [leads@trophyapa.com](mailto:leads@trophyapa.com)



**BIDDING ENDS WEDNESDAY, NOVEMBER 5<sup>TH</sup> AT 10:00 AM**  
**SEE FULL TERMS & CONDITIONS AT [WWW.TROPHYPA.COM](http://WWW.TROPHYPA.COM)**



### PROPERTY ADDRESS:

00 Monroe Road 943  
Madison, MO 65263

**ACRES: 125±**

**COUNTY: Monroe**

### AUCTION DETAILS:

**Bidding Ends Wednesday, November 5th at 10AM.**

These 125± flat to gently rolling acres are located on Monroe Road 943, 7.5 miles southeast of Madison. The Farm Service Agency reports 96.63 acres of cropland with soils primarily consisting of Arbela, Gifford, and Armstrong silt loam. The remainder includes wooded draws and Bee Branch along the west edge, offering hunting and recreational opportunities. The property sells free and clear of a tenant for the 2026 crop season.

The Blackwell Farm is located 40 miles north of Columbia and about two hours west of Chesterfield.

### Property Highlights:

- 125± total acres, flat to gently rolling
- 96.63± acres of cropland
- Soils primarily Arbela, Gifford, and Armstrong silt loam
- Wooded draws and Bee Branch along the west edge; good hunting and recreation
- Free and clear of tenant for the 2026 crop season



**PRESENTED BY:**

**FRANK WALLACE**

**Land & Residential Specialist**

M: (573) 470-0779

P: (855) 573-5263 x718

E: [fwallace@trophyapa.com](mailto:fwallace@trophyapa.com)

**PARKER WALLACE**

**Land & Residential Specialist**

M: (573) 470-6779

P: (855) 573-5263 x713

E: [pwallace@trophyapa.com](mailto:pwallace@trophyapa.com)

**Trophy Properties and Auction**

640 Cepi Drive, Suite 100  
Chesterfield, MO 63005

[www.TrophyPA.com](http://www.TrophyPA.com)  
[leads@trophyapa.com](mailto:leads@trophyapa.com)



**T R O P H Y**  
PROPERTIES AND AUCTION  
LAND | RECREATIONAL | RESIDENTIAL

# Monroe County Missouri Land for Sale at Auction

## Blackwell Farm

[www.TrophyPA.com](http://www.TrophyPA.com) • (855) 573-5263 • [leads@trophy.com](mailto:leads@trophy.com)



The information is believed to be accurate; however, no liability for its accuracy, errors or omissions is assumed. All lines are drawn on maps, photographs, etc. are approximate. Buyers should verify the information to their satisfaction. There are no expressed or implied warranties pertaining to this property. Both real estate (including all improvements, if any) is being sold As Is, Where Is with NO warranties expressed or implied. Please make all inspections and have financing arranged prior to the end of bidding.