



T R O P H Y
PROPERTIES AND AUCTION
LAND | RECREATIONAL | RESIDENTIAL

Montgomery County Missouri Land for Sale at Auction—Humes Farm

www.TrophyPA.com • (855) 573-5263 • leads@trophyapa.com



BIDDING ENDS TUESDAY, JUNE 17TH AT 10:00 AM
SEE FULL TERMS & CONDITIONS AT WWW.TROPHYPA.COM



PROPERTY ADDRESS:

00 Highway N
New Florence, MO 63363

ACRES: 144.8±

COUNTY: Montgomery

AUCTION DETAILS:

Positively Sells to the Highest Bidder!

Preview Day Saturday, June 7th 11AM to 1PM.

These 144.8± flat to gently rolling acres offered in 3 tracts are conveniently located near New Florence along I-70 and near State Highway N. The Farm Service Agency figures there to be 27.16 acres of cropland with the soils consisting mostly of Dockery, Nodaway, and Keswick Silt Loams. The balance of the land is mature hardwoods and the Loutre River. The Humes farm offers excellent hunting, fishing, and recreation along with prime building spots for your weekend getaway or forever home.

Tract 1:

- 15.9± acres
- 7± acres of cropland/open land
- Keswick Silt Loam soils
- Mature Hardwoods
- Homesites
- Hunting & Recreation

Tract 2:

- 54.4± acres
- Mature Hardwoods
- Loutre River
- Excellent Hunting & Recreation
- Homesites

PRESENTED BY:

ERIC MERCHANT

Real Estate Consultant

M: (636) 251-5105

P: (855) 573-5263 x730

E: emerchant@trophyapa.com

MIKE MEAGHER

Real Estate Consultant

M: (636) 251-4545

P: (855) 573-5263 x767

E: meagher@trophyapa.com

Trophy Properties and Auction

640 Cepi Drive, Suite 100
Chesterfield, MO 63005

www.Trophyapa.com
leads@trophyapa.com



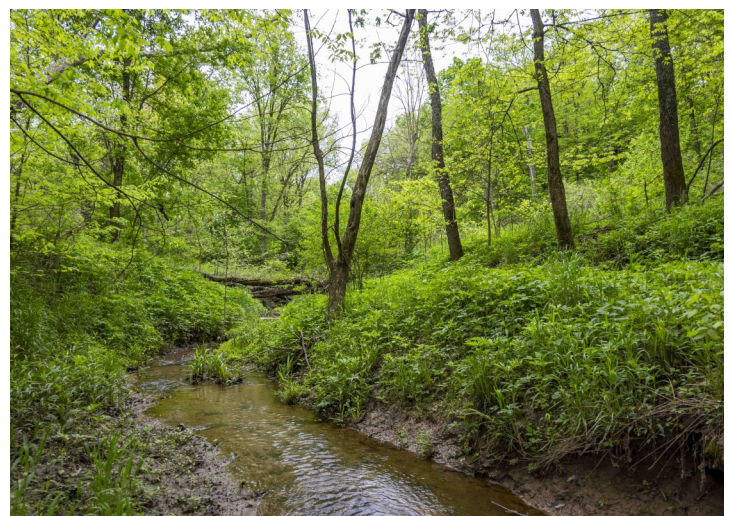
T R O P H Y
PROPERTIES AND AUCTION
LAND | RECREATIONAL | RESIDENTIAL

Montgomery County Missouri Land for Sale at Auction—Humes Farm

www.TrophyPA.com • (855) 573-5263 • leads@trophy.com

Tract 3:

- 74.5± acres
- 20± acres of cropland
- Dockery and Nodaway Silt Loams soils
- Mature Hardwoods
- Loutre River
- Excellent Hunting & Recreation
- Homesites



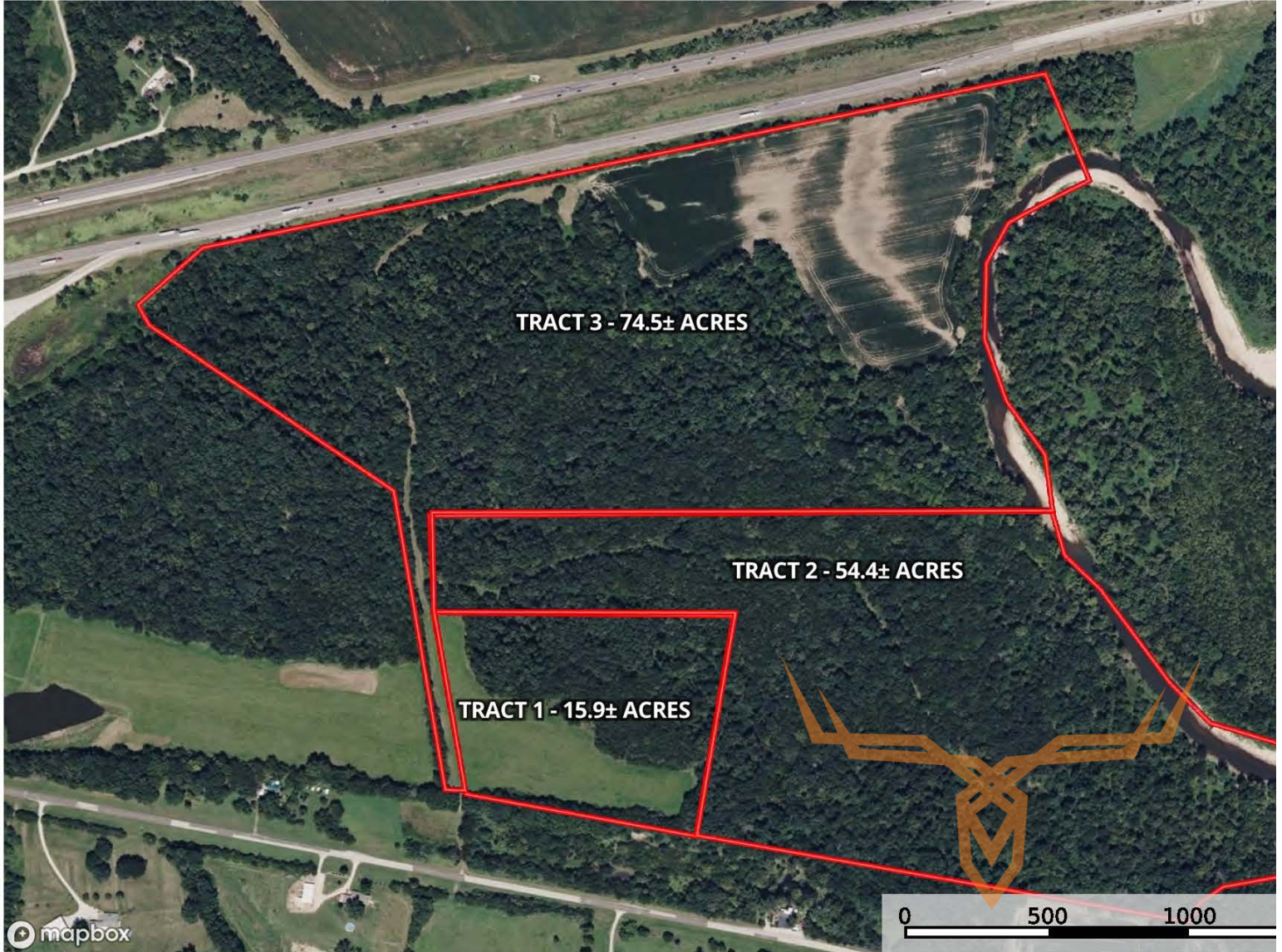


T R O P H Y
PROPERTIES AND AUCTION
LAND | RECREATIONAL | RESIDENTIAL

Montgomery County Missouri Land for Sale at Auction—Humes Farm

www.TrophyPA.com • (855) 573-5263 • leads@trophy.com

Montgomery County, MO - Humes Farm
Missouri, AC +/-



Boundary

Auction Division
P: (855) 573-5263

www.trophy.com

640 Cepi Drive, Suite A, Chesterfield, MO 63005



The information is believed to be accurate; however, no liability for its accuracy, errors or omissions is assumed. All lines are drawn on maps, photographs, etc. are approximate. Buyers should verify the information to their satisfaction. There are no expressed or implied warranties pertaining to this property. Both real estate (including all improvements, if any) is being sold As Is, Where Is with NO warranties expressed or implied. Please make all inspections and have financing arranged prior to the end of bidding.