



# Phelps County Missouri Land for Sale at Auction - Ruck Farm

[www.TrophyPA.com](http://www.TrophyPA.com) • (855) 573-5263 • [leads@trophyapa.com](mailto:leads@trophyapa.com)



BIDDING ENDS WEDNESDAY, JANUARY 22<sup>ND</sup> AT 10:00 AM  
SEE FULL TERMS & CONDITIONS AT [WWW.TROPHYPA.COM](http://WWW.TROPHYPA.COM)



**PROPERTY ADDRESS:**  
00 County Road 1330  
St. James, MO 65559

**ACRES:** 87.55±  
**COUNTY:** Phelps

## AUCTION DETAILS:

This 87.55± acre property offers a great setup for hunting and recreation. A wet-weather creek runs through the tract, surrounded by hardwood timber and a cedar thicket that provides good wildlife cover. A small pond near the gated entrance adds water for deer and turkey, which are plentiful in the area.

Open fields are ready for food plots and are positioned well for hunting. Multiple tree stands are already in place, providing easy access to hunting spots. The combination of timber, open ground, and water creates solid opportunities for outdoor use.

Located 20 minutes from Cuba, 30 minutes from Rolla, and an hour and a half from Chesterfield Valley, it's a convenient getaway for hunting or weekend retreats.



## PRESENTED BY:

**JASON CLEVELAND**

**Broker/Partner**

M: (636) 751-4579

P: (855) 573-5263 x701

E: [jcleveland@trophyapa.com](mailto:jcleveland@trophyapa.com)

**Trophy Properties and Auction**

640 Cepi Drive

Suite 100

Chesterfield, MO 63005

[www.Trophyapa.com](http://www.Trophyapa.com)

[leads@trophyapa.com](mailto:leads@trophyapa.com)

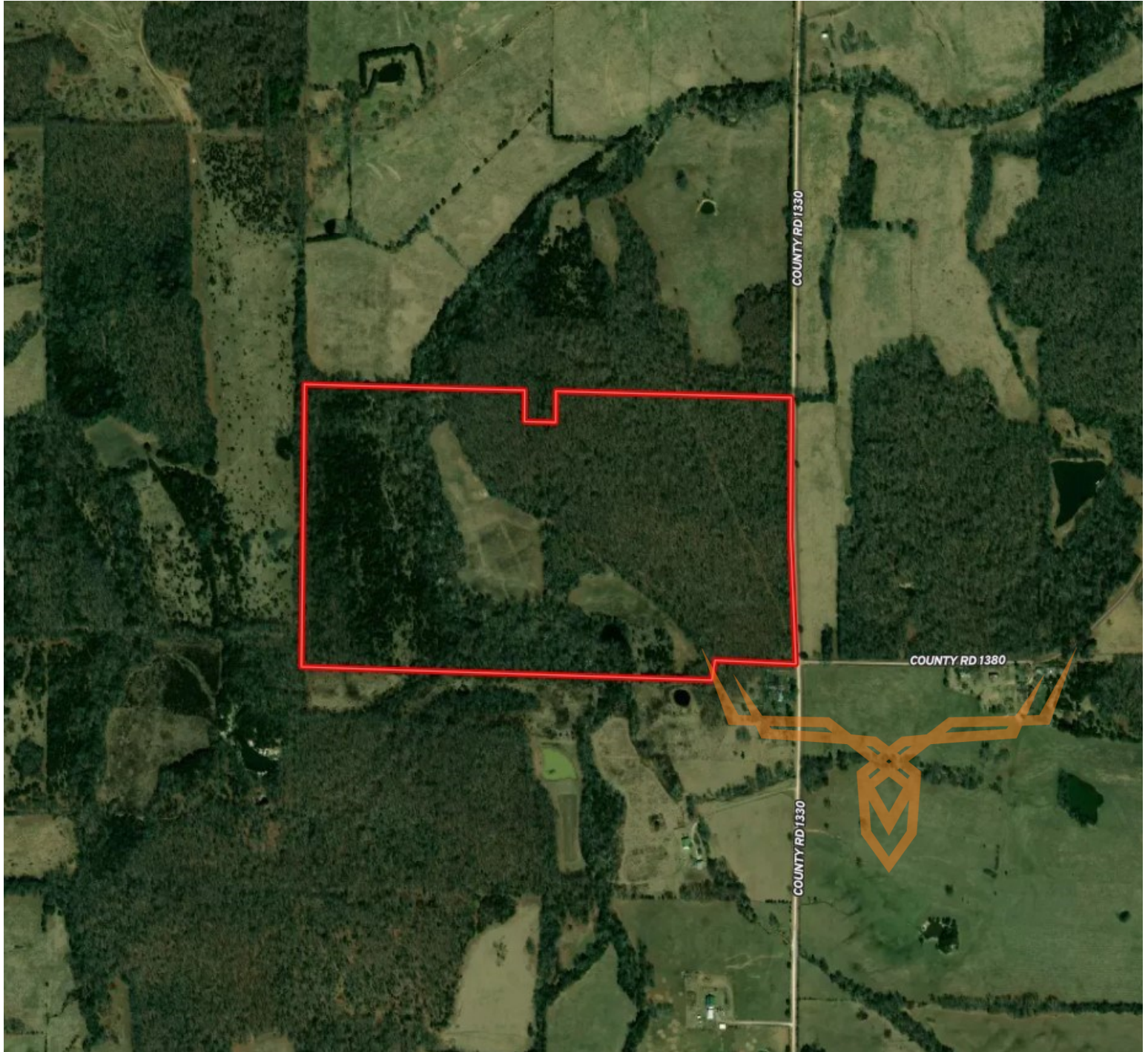




**T R O P H Y**  
PROPERTIES AND AUCTION  
LAND | RECREATIONAL | RESIDENTIAL

# Phelps County Missouri Land for Sale at Auction - Ruck Farm

[www.TrophyPA.com](http://www.TrophyPA.com) • (855) 573-5263 • [leads@trophy.com](mailto:leads@trophy.com)



The information is believed to be accurate; however, no liability for its accuracy, errors or omissions is assumed. All lines are drawn on maps, photographs, etc. are approximate. Buyers should verify the information to their satisfaction. There are no expressed or implied warranties pertaining to this property. Both real estate (including all improvements, if any) is being sold As Is, Where Is with NO warranties expressed or implied. Please make all inspections and have financing arranged prior to the end of bidding.