



# Pike County Missouri Real Estate for Sale at Auction - 20305 Highway M Curryville, MO

www.TrophyPA.com • (855) 573-5263 • leads@trophyapa.com



## PROPERTY ADDRESS:

20305 State Hwy M  
Curryville, MO 63339

**ACRES:** 20±

**COUNTY:** Pike

## AUCTION DETAILS:

**Positively Sells to the Highest Bidder!**

**Buyer's Agents Welcome – See Co-op Agreement for complete details!**

**Open House Sunday, August 10th 1PM to 3PM.**

Here's a well-rounded rural property in Pike County, Missouri—20± acres just off blacktop Highway M featuring a spacious custom home, multiple outbuildings, and a private grass runway.

The 3 bed, 2.5 bath home offers nearly 4,000 sq ft of finished living space, including a bonus room upstairs and a partially finished walkout basement. Features include vaulted ceilings, a generous kitchen with plenty of storage, a sunroom, and a main-floor primary suite with an oversized walk-in closet. The home is on public water and has an attached 2-car garage.

Improvements include a large, insulated shop with wood stove and oversized door—great for equipment, RVs, or boat storage—as well as a second barn suitable for livestock or additional storage. A secluded tiny home tucked in the timber provides guest quarters or rental potential.

The land is a good balance of open ground and scattered trees, ideal for small-scale farming, hunting, or general recreation. A private grass airstrip for ultralight aircraft adds a rare bonus for aviation enthusiasts. With blacktop frontage and proximity to Mark Twain Lake, this setup works well for full-time living, weekend use, or as a base for outdoor adventure.

## PRESENTED BY:

### ERIC MERCHANT

Real Estate Consultant

M: (636) 251-5105

P: (855) 573-5263 x730

E: emerchant@trophyapa.com

### MIKE MEAGHER

Real Estate Consultant

M: (636) 251-4545

P: (855) 573-5263 x767

E: meagher@trophyapa.com

## Trophy Properties and Auction

640 Cepi Drive, Suite 100  
Chesterfield, MO 63005

www.Trophyapa.com  
leads@trophyapa.com





# Pike County Missouri Real Estate for Sale at Auction - 20305 Highway M Curryville, MO

**T R O P H Y**  
PROPERTIES AND AUCTION  
LAND | RECREATIONAL | RESIDENTIAL

[www.TrophyPA.com](http://www.TrophyPA.com) • (855) 573-5263 • [leads@trophy.com](mailto:leads@trophy.com)

## Property Highlights:

- 20± acres with mix of open & wooded ground
- 3 bed, 2.5 bath custom home (~4,000 sq ft)
- Public water, walkout basement, sunroom, bonus room
- Attached 2-car garage
- Large insulated shop with wood stove
- Additional barn for livestock, storage, or hobbies
- Tiny home tucked in timber for guests or rental
- Private ultralight runway on site
- Blacktop frontage on Hwy M
- Short drive to Mark Twain Lake and public hunting/fishing
- Under 1 hour to Wentzville & Chesterfield, MO



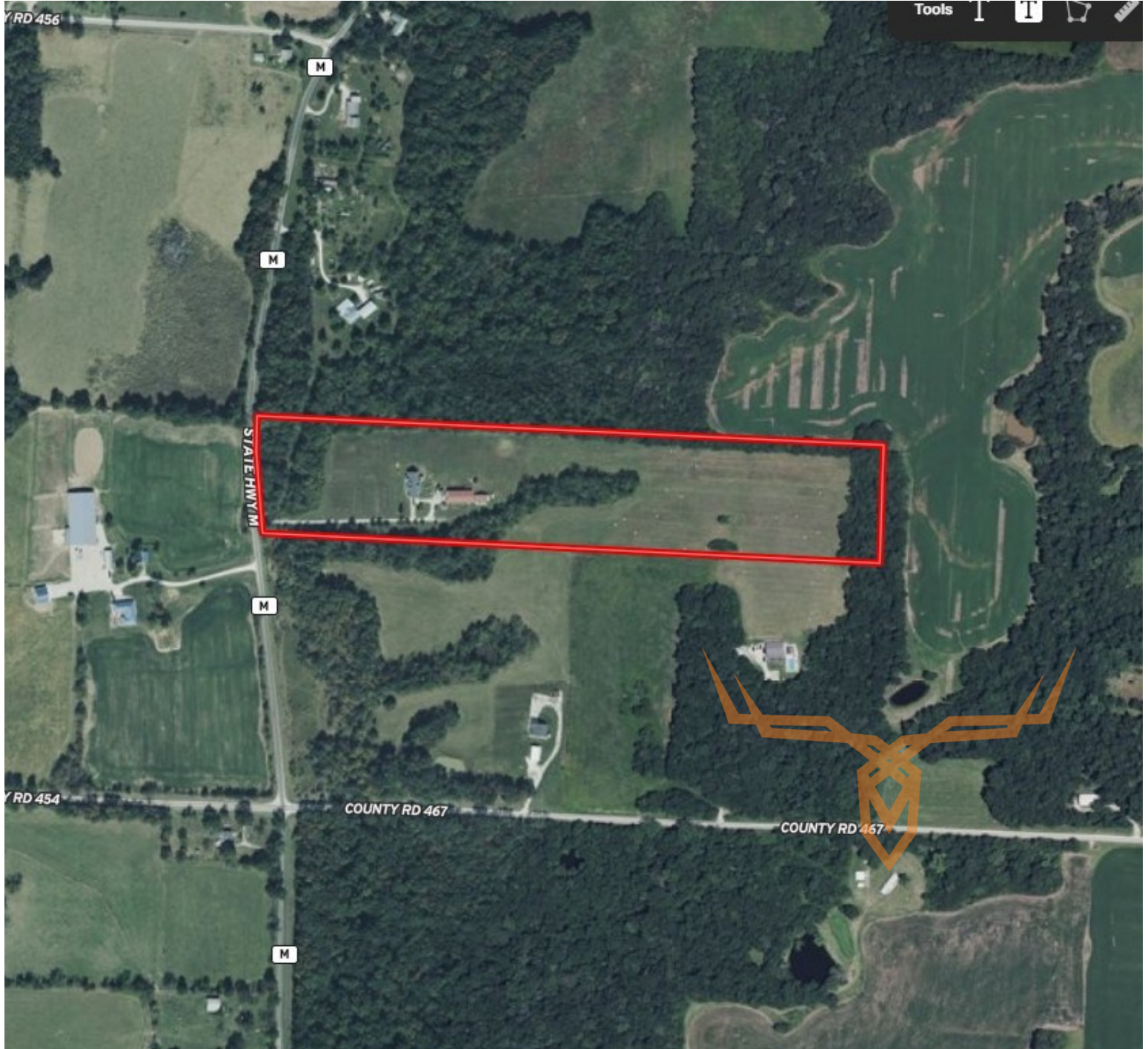




# Pike County Missouri Real Estate for Sale at Auction - 20305 Highway M Curryville, MO

**T R O P H Y**  
PROPERTIES AND AUCTION  
LAND | RECREATIONAL | RESIDENTIAL

[www.TrophyPA.com](http://www.TrophyPA.com) • (855) 573-5263 • [leads@trohypa.com](mailto:leads@trohypa.com)



The information is believed to be accurate; however, no liability for its accuracy, errors or omissions is assumed. All lines are drawn on maps, photographs, etc. are approximate. Buyers should verify the information to their satisfaction. There are no expressed or implied warranties pertaining to this property. Both real estate (including all improvements, if any) is being sold As Is, Where Is with NO warranties expressed or implied. Please make all inspections and have financing arranged prior to the end of bidding.