



T R O P H Y
PROPERTIES AND AUCTION
LAND | RECREATIONAL | RESIDENTIAL

Ralls County Missouri Land for Sale at Auction

- Terry Berry Estate

www.TrophyPA.com • (855) 573-5263 • leads@trophy.com



BIDDING ENDS THURSDAY, NOVEMBER 14TH AT 1:00PM
SEE FULL TERMS & CONDITIONS AT WWW.TROPHYPA.COM

PROPERTY ADDRESS:

18830 Harbortown Road
Monroe City, MO 63456

ACRES: 202.4

COUNTY: Ralls

AUCTION DETAILS:

Preview Day Saturday, November 2nd 9AM to Noon.

Bidding Ends Thursday, November 14th at 1PM.

202.4 surveyed acres offered in 11 tracts ranging from 10± to 20± acres each. The land consists of a mix of flat to gently rolling pasture and wooded areas, providing excellent building sites and recreational opportunities. Multiple ponds are located throughout the property.

This land is located close to Mark Twain Lake, Spalding Beach, and The Landing, offering boating, swimming, and other outdoor activities. The area is known for great hunting and recreational potential.

Conveniently located just 25 miles from Hannibal, MO, 1 hour and 20 minutes from Columbia, MO, and 1 hour and 45 minutes from Chesterfield Valley, MO.

Tract 1: 10.9 flat to gently rolling acres, Harbortown Road frontage, with several building site.

Tract 2: 20.3 flat to gently rolling acres, with great building site, access by shared road agreement.



PRESENTED BY:

JASON CHINN

Land Specialist

M: (573) 514-9368

P: (855) 573-5263 x708

E: jchinn@trophy.com

Trophy Properties and Auction

640 Cepi Drive

Suite 100

Chesterfield, MO 63005

www.TrophyPA.com

leads@trophy.com



Ralls County Missouri Land for Sale at Auction

- Terry Berry Estate

www.TrophyPA.com • (855) 573-5263 • leads@trophyPA.com

Tract 3: 20.2 flat to gently rolling acres, 1.5± acre pond, mature timber, with several building site, access by shared road agreement.

Tract 4: 19.6 flat to gently rolling acres, has a small pond, and mature timber, with several building site, access by shared road agreement.

Tract 5: 19.4 flat to gently rolling acres, with a mix of mature timber, and several building sites, access by shared road agreement.

Tract 6: 19.5 flat to gently rolling acres, with a mix of mature timber, with several building sites, access by shared road agreement.

Tract 7: 20.7 flat to gently rolling acres, Harbortown Road frontage, 1.5± acre pond, located on this is a 60x40 shed, 30x33 shed, 42x46 barn, and a 60x35 hoop barn.

Tract 8: 9.4 flat to gently rolling acres, Harbortown and Redwood Trails Road frontage, 1± acre pond, utilities present.

Tract 9: 20.7 flat to gently rolling acres, Redwood Trails Road frontage, with several building sites.

Tract 10: 20.7 flat to gently rolling acres, Redwood Trails Road frontage, small pond, several building sites.

Tract 11: 21 flat to gently rolling acres, Redwood Trails Road frontage, mixture of mature timber, with several building sites.



The information is believed to be accurate; however, no liability for its accuracy, errors or omissions is assumed. All lines are drawn on maps, photographs, etc. are approximate. Buyers should verify the information to their satisfaction. There are no expressed or implied warranties pertaining to this property. Both real estate (including all improvements, if any) is being sold As Is, Where Is with NO warranties expressed or implied. Please make all inspections and have financing arranged prior to the end of bidding.

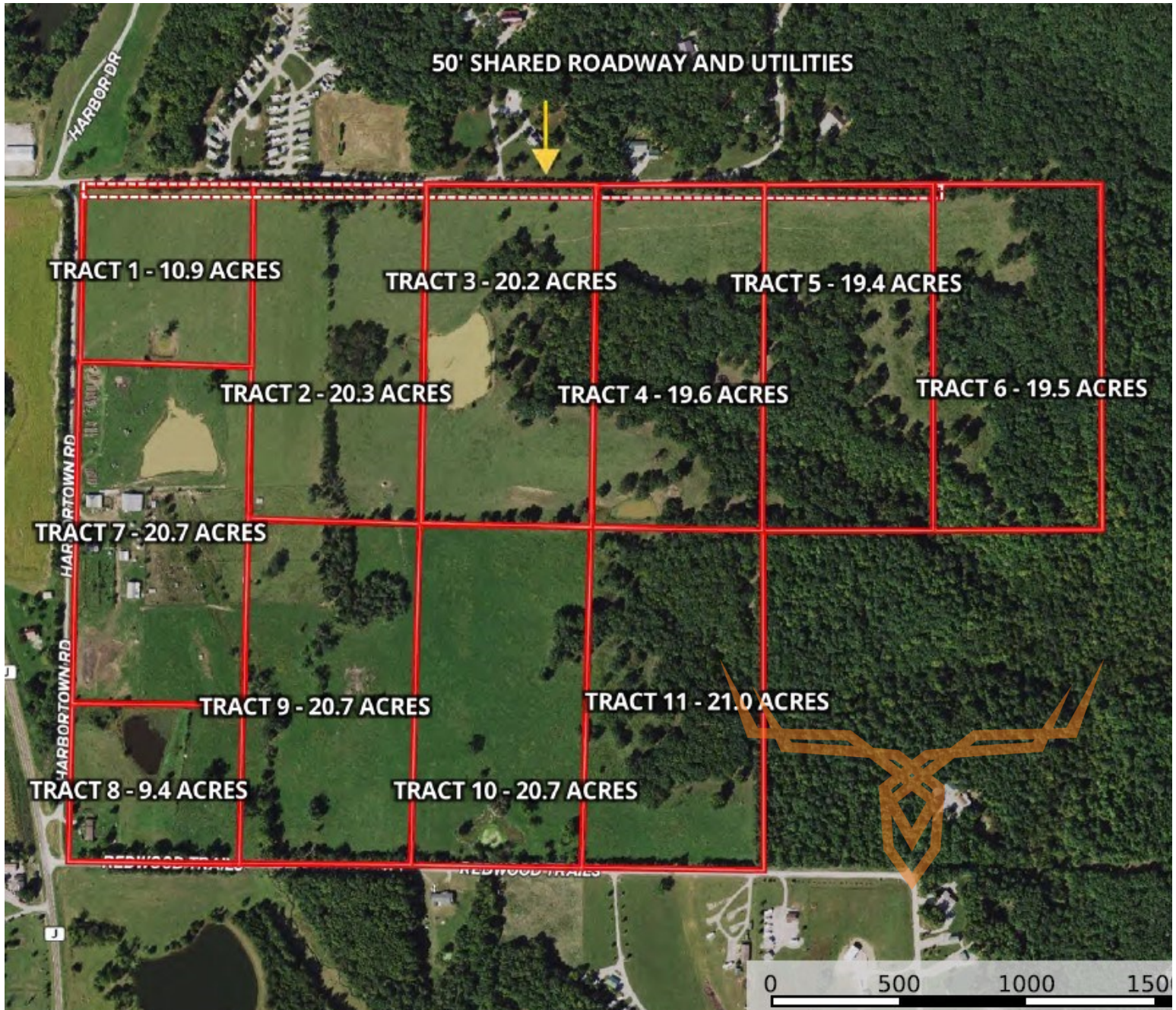


Ralls County Missouri Land for Sale at Auction

- Terry Berry Estate

T R O P H Y
PROPERTIES AND AUCTION
LAND | RECREATIONAL | RESIDENTIAL

www.TrophyPA.com • (855) 573-5263 • leads@trophyPA.com



The information is believed to be accurate; however, no liability for its accuracy, errors or omissions is assumed. All lines are drawn on maps, photographs, etc. are approximate. Buyers should verify the information to their satisfaction. There are no expressed or implied warranties pertaining to this property. Both real estate (including all improvements, if any) is being sold As Is, Where Is with NO warranties expressed or implied. Please make all inspections and have financing arranged prior to the end of bidding.