



T R O P H Y
PROPERTIES AND AUCTION
LAND | RECREATIONAL | RESIDENTIAL

Randolph County Missouri Land for Sale at Auction

- Berendzen Farm

www.TrophyPA.com • (855) 573-5263 • leads@trophyapa.com



PROPERTY ADDRESS:

10550 Hwy A
Higbee, MO 65257

ACRES: 258
COUNTY: Randolph

AUCTION DETAILS:

Open House Saturday, May 10th 11AM to 2PM.

Discover this beautiful 258± acre property in Randolph County, Missouri, just 2 miles south of Higbee, available offered in 10 individual tracts. Featuring gently rolling terrain, the land offers a balanced blend of open fields and mature timber—ideal for home sites, farming operations, hunting, and recreation.

The property includes a stunning 4-bedroom ranch-style home with a finished basement, perfectly positioned to overlook a scenic 2.5± acre lake. The basement features a rear entry garage measuring 20' x 25'. It also has a "Canning Kitchen" with stainless steel sink and counters.

Additional improvements include a 60' x 100' pull-through metal building equipped with three horse stalls, a chicken coop, and ample covered storage under the overhangs on either side. The building has electric and is plumbed for a bathroom and water heater.

A rustic one bedroom cabin sits on the south side of the property with a private driveway off of a county road. It would make for a great hunting cabin, guest quarters, or weekend retreat. Approximately 20 acres are high-fenced and divided into eight separate paddocks, currently used for raising elk and could easily be used for other livestock.

Large blocks of timber and multiple secluded fields are perfect for hunting deer and turkey. Property features multiple small ponds and has trails throughout.

Conveniently located just 11 miles from Moberly and only 35 minutes from Columbia, MO this property would make a great weekend retreat or full time residence just outside of town.

PRESENTED BY:

ERIC MERCHANT

Real Estate Consultant

M: (636) 251-5105

P: (855) 573-5263 x730

E: emerchant@trophyapa.com

MIKE MEAGHER

Real Estate Consultant

M: (636) 251-4545

P: (855) 573-5263 x767

E: meagher@trophyapa.com

Trophy Properties and Auction

640 Cepi Drive, Suite 100
Chesterfield, MO 63005

www.Trophyapa.com
leads@trophyapa.com



T R O P H Y
PROPERTIES AND AUCTION
LAND | RECREATIONAL | RESIDENTIAL

Randolph County Missouri Land for Sale at Auction

- Berendzen Farm

www.TrophyPA.com • (855) 573-5263 • leads@trophyPA.com

Tract 1:

- Consists of 15± mostly open acres
- Ready for Horses
- Beautiful 4 bedroom ranch home with 2,396 sq ft on the main level with a finished basement, overlooking a 2.5± acre lake.
- 60'x100' pull through Barn with electric, plumbed for a bathroom, 3 horse stalls, additional covered area on both sides, and a chicken coop.
- Additional Smaller pond

Tract 2:

- Consists of 20± Acres of mostly open ground
- Nice sized Pond
- Excellent build site
- Utilities nearby

Tract 3:

- Consists of 18± Acres with frontage on State Hwy A
- Mostly open with scattered woods
- Several small ponds
- Utilities nearby

Tract 4:

- Consists of 26± Acres of mostly open ground
- Nice sized Pond
- Great build sites
- Frontage on State Highway A
- Utilities nearby

Tract 5:

- Consists of 9± Acres
- Mostly open with some woods
- Frontage on Hwy A and County RD D274
- Great Build sites
- Utilities nearby

Tract 6:

- Consists 5± Acres
- Almost all open, flat ground
- 1 Bedroom Cabin with utilities

Tract 7:

- 25± mostly wooded acres
- Several secluded fields
- Several nice build sites
- Great hunting and recreation
- Utilities nearby

Tract 8:

- Consists of 98± Acres with woods and open ground
- Nearly 20 Acres of high fence enclosure which includes 8 separate paddocks along with a metal shed
- Several small ponds
- Trails throughout
- Great Hunting

Tract 9:

- Consists of 21± Acres
- Gently rolling, partially wooded
- Small pond
- Great Build site or recreation piece
- Very Private
- Utilities nearby

Tract 10:

- Consists of 21± Acres
- Gently rolling, Mostly wooded
- Great Build site or recreation piece
- Very Private
- Utilities nearby

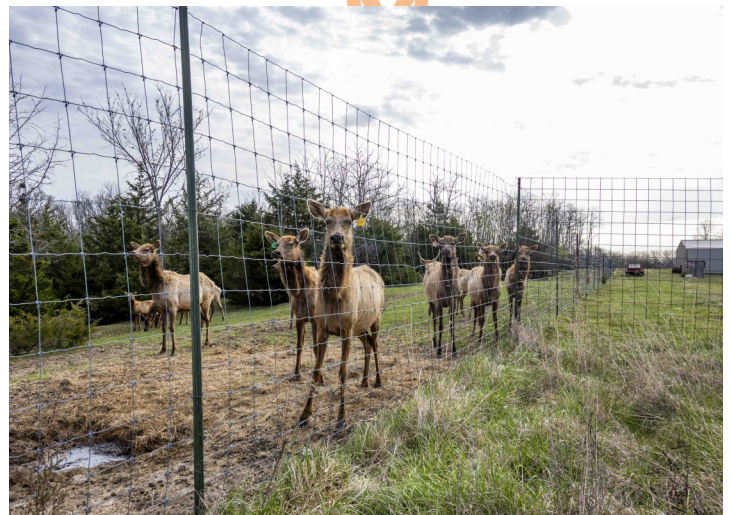


Randolph County Missouri Land for Sale at Auction

- Berendzen Farm

T R O P H Y
PROPERTIES AND AUCTION
LAND | RECREATIONAL | RESIDENTIAL

www.TrophyPA.com • (855) 573-5263 • leads@trophyPA.com



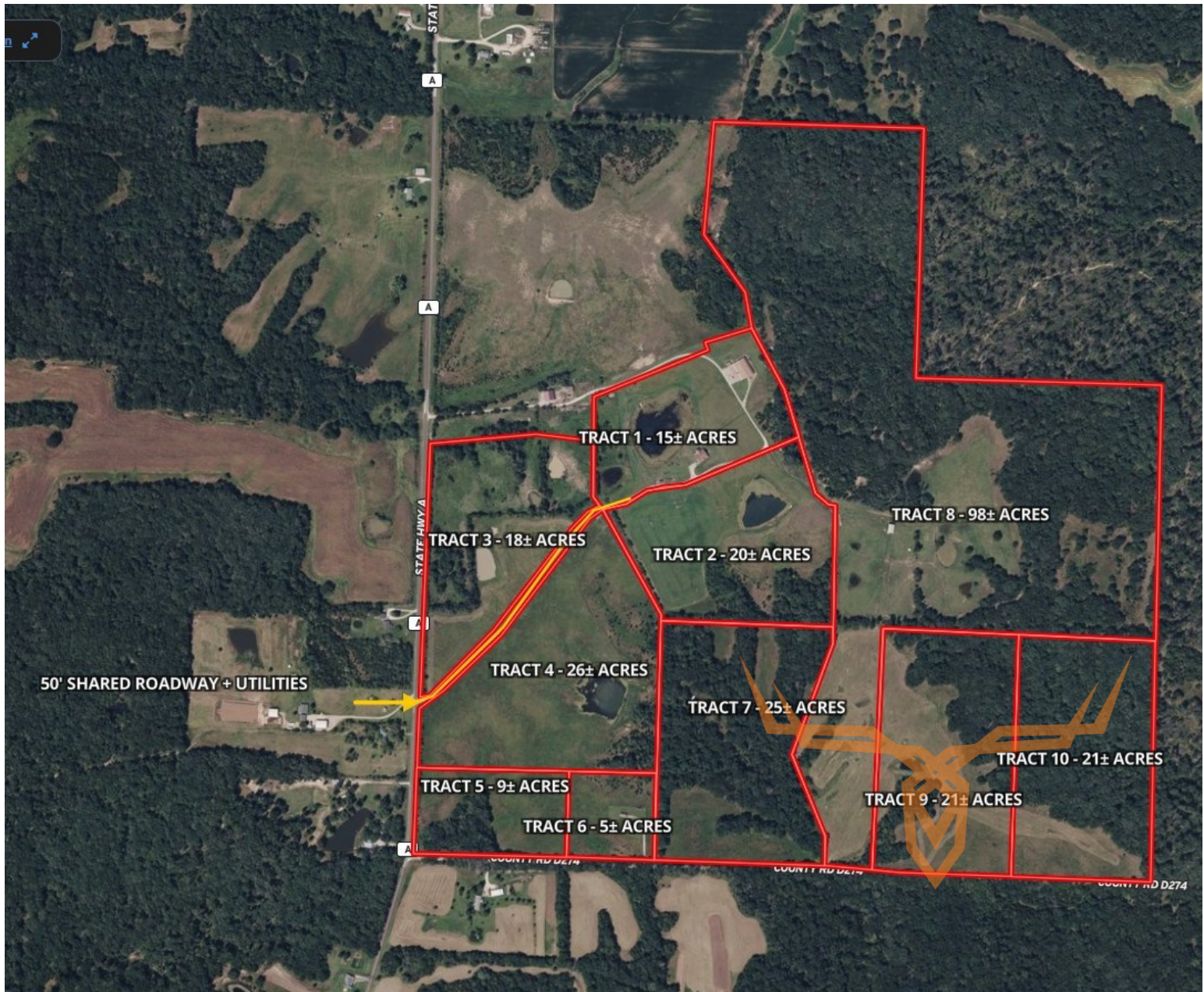


T R O P H Y
PROPERTIES AND AUCTION
LAND | RECREATIONAL | RESIDENTIAL

Randolph County Missouri Land for Sale at Auction

- Berendzen Farm

www.TrophyPA.com • (855) 573-5263 • leads@trophy.com



The information is believed to be accurate; however, no liability for its accuracy, errors or omissions is assumed. All lines are drawn on maps, photographs, etc. are approximate. Buyers should verify the information to their satisfaction. There are no expressed or implied warranties pertaining to this property. Both real estate (including all improvements, if any) is being sold As Is, Where Is with NO warranties expressed or implied. Please make all inspections and have financing arranged prior to the end of bidding.