

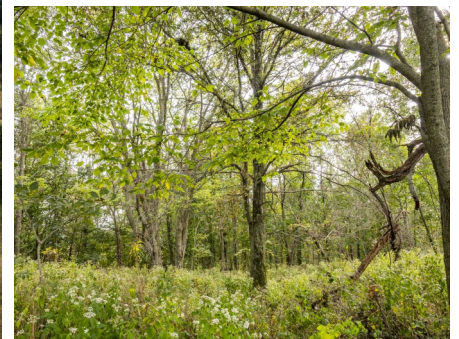


**T R O P H Y**  
PROPERTIES AND AUCTION  
LAND | RECREATIONAL | RESIDENTIAL

# Randolph County MO Land for Sale at Auction

## - Harvest Moon Sporting Club

[www.TrophyPA.com](http://www.TrophyPA.com) • (855) 573-5263 • [leads@trophyapa.com](mailto:leads@trophyapa.com)



**BIDDING ENDS TUESDAY, NOVEMBER 11<sup>TH</sup> AT 10:00 AM**  
**SEE FULL TERMS & CONDITIONS AT [WWW.TROPHYPA.COM](http://WWW.TROPHYPA.COM)**

### PROPERTY ADDRESS:

00 County Road 1145  
Huntsville, MO 65259

**ACRES: 234±**  
**COUNTY: Randolph**

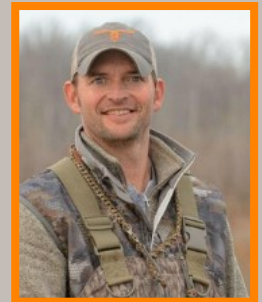
### AUCTION DETAILS:

We are excited to bring you 234± flat to gently rolling acres being offered in two tracts located a few miles northwest of Huntsville, Mo on CR1145/A90. Both tracts currently have soybeans and will sell without a tenant contract for the 2026 crop year. A tenant contract may be extended that will pay \$200/acre cash rent for the 2026 and 2027 crop years if desired. Both tracts are 55 minutes north of Columbia and 2 hours and 25 minutes from St. Charles. A survey will be conducted before the auction that will determine the certified acres to be sold.

**Tract 1:** This 68± acre tract has rolling hills with gravel road access just one mile north of Highway O. This tract has 62.5± (92%) tillable acres consisting of primarily Keswick and Lagonda silt loam soils. This farm has a nice potential building site with a gorgeous sunrise view on the ridge in the northwest corner of the property, located in the Westran School District. There are two potential areas that could provide a nice opportunity to build a 3± acre and/or a 4± acre pond for fishing or serve as a water source for livestock. Whether you are looking for a place to build a home, add tillable acres or develop a farm for livestock, check out this tract.

**Tract 2:** This 166± acre farm has 122± acres of tillable ground consisting of Keswick and Lagonda silt loam soils. The farm is currently planted in beans which will provide some BIG yield numbers this fall. On the west side of CR 1145, this farm has two prospective build sites with incredible sunset views from a high ridge along the east side of the tract near the gravel road. This farm is located in the Westran School District.

There are 5 ponds (4.8±, 3.5±, 3±, 0.55± and 0.25± acres) totaling over 12± acres of water providing year-round recreational activity. The larger ponds are stocked with bass, crappie, and catfish. There are over 30 acres of woods and native grasses that provide some incredible cover and serve as bedding and travel corridors for the deer that are in this area. The age structure of the deer in this area is more advanced than most areas in the state, due to reduced hunting pressure, the size of the tracts of land adjacent to this property and lack of roads. Don't miss your opportunity to own this diverse property



### PRESENTED BY:

**JODY GRAFF**  
**Land & Habitat Specialist**

M: (660) 973-1606  
P: (855) 573-5263 x703  
E: [jgraff@trophyapa.com](mailto:jgraff@trophyapa.com)

**Trophy Properties and Auction**  
640 Cepi Drive  
Suite 100  
Chesterfield, MO 63005

[www.Trophyapa.com](http://www.Trophyapa.com)  
[leads@trophyapa.com](mailto:leads@trophyapa.com)

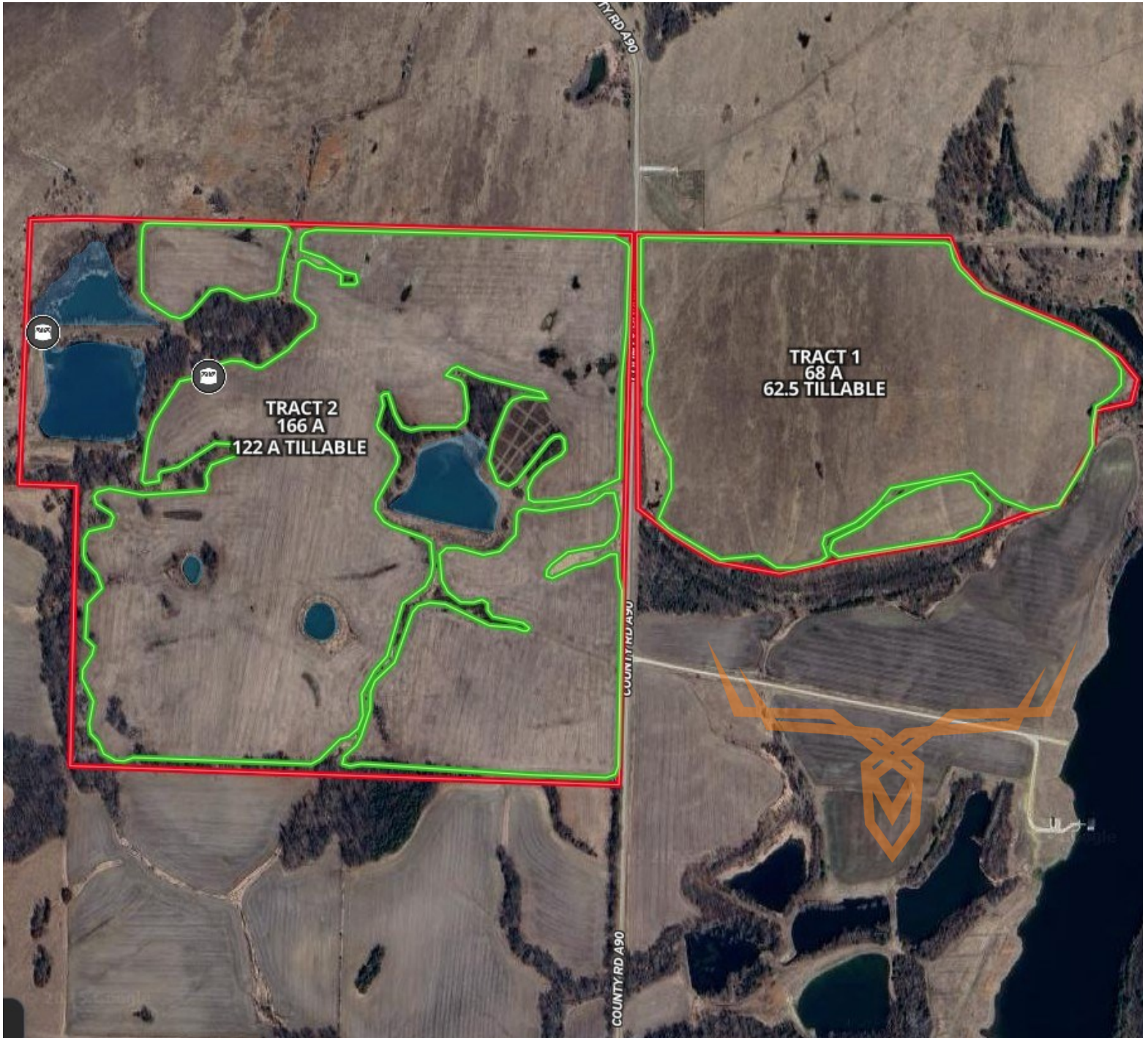




**T R O P H Y**  
PROPERTIES AND AUCTION  
LAND | RECREATIONAL | RESIDENTIAL

# Randolph County MO Land for Sale at Auction - Harvest Moon Sporting Club

[www.TrophyPA.com](http://www.TrophyPA.com) • (855) 573-5263 • [leads@trohypa.com](mailto:leads@trohypa.com)



The information is believed to be accurate; however, no liability for its accuracy, errors or omissions is assumed. All lines are drawn on maps, photographs, etc. are approximate. Buyers should verify the information to their satisfaction. There are no expressed or implied warranties pertaining to this property. Both real estate (including all improvements, if any) is being sold As Is, Where Is with NO warranties expressed or implied. Please make all inspections and have financing arranged prior to the end of bidding.