



**T R O P H Y**  
PROPERTIES AND AUCTION  
LAND | RECREATIONAL | RESIDENTIAL

# Stoddard County Missouri Real Estate for Sale at Auction - Bridgewater Home & Acreage

[www.TrophyPA.com](http://www.TrophyPA.com) • (855) 573-5263 • [leads@trophyapa.com](mailto:leads@trophyapa.com)



**BIDDING ENDS THURSDAY, NOVEMBER 14<sup>TH</sup> AT 10:00 AM**  
SEE FULL TERMS & CONDITIONS AT [WWW.TROPHYPA.COM](http://WWW.TROPHYPA.COM)



## PROPERTY ADDRESS:

21967 County Road 510  
Bloomfield, MO 63825

**ACRES: 62**

**COUNTY:** Stoddard

## AUCTION DETAILS:

**Open House Sunday, October 20th Noon to 3PM.**

**Bidding Ends Thursday, November 14th at 10AM.**

This secluded but accessible 4-bedroom 2 bath house (2,280 Sq Ft) on 62± acres is an ideal rural setting. The spacious home features a wood burning fireplace that can be loaded from the inside or outside. The three nice size bedrooms along with the larger master bedroom make it ideal for a family or hunting lodge. There are two different living areas that offer plenty of room to relax. A covered back deck is set up perfect for morning coffee or a nice evening. The house has an attached two car garage and plenty of space for storage. A metal roof gives the house a rustic feel and durability. The property also includes two older barns.

Property features are a large, stocked pond that is set in the center of the woods. An abundance of wildlife calls these woods home including deer and turkey. The current owner has harvested a number of whitetail deer over the years. The land could easily become a mecca for big southeast Missouri bucks as it has all the right ingredients. Nice timber throughout the property with several great open areas for food plots. Trail system through the property and to the pond. The property is only 4.5 miles to Bloomfield and 11.3 miles to Dexter. This home could be a great forever home or weekend getaway!

## PRESENTED BY:

### BOBBY EVANS

**Land & Home Specialist**

M: (636) 234-1816

P: (855) 573-5263 x727

E: [bevans@trophyapa.com](mailto:bevans@trophyapa.com)

### RICHARD EVANS

**Land & Home Specialist**

M: (636) 578-3159

P: (855) 573-5263 x726

E: [revans@trophyapa.com](mailto:revans@trophyapa.com)

## Trophy Properties and Auction

640 Cepi Drive, Suite 100  
Chesterfield, MO 63005

[www.Trophyapa.com](http://www.Trophyapa.com)  
[leads@trophyapa.com](mailto:leads@trophyapa.com)





# Stoddard County Missouri Real Estate for Sale at Auction

## - Bridgewater Home & Acreage

**T R O P H Y**  
PROPERTIES AND AUCTION  
LAND | RECREATIONAL | RESIDENTIAL

[www.TrophyPA.com](http://www.TrophyPA.com) • (855) 573-5263 • [leads@trophyPA.com](mailto:leads@trophyPA.com)



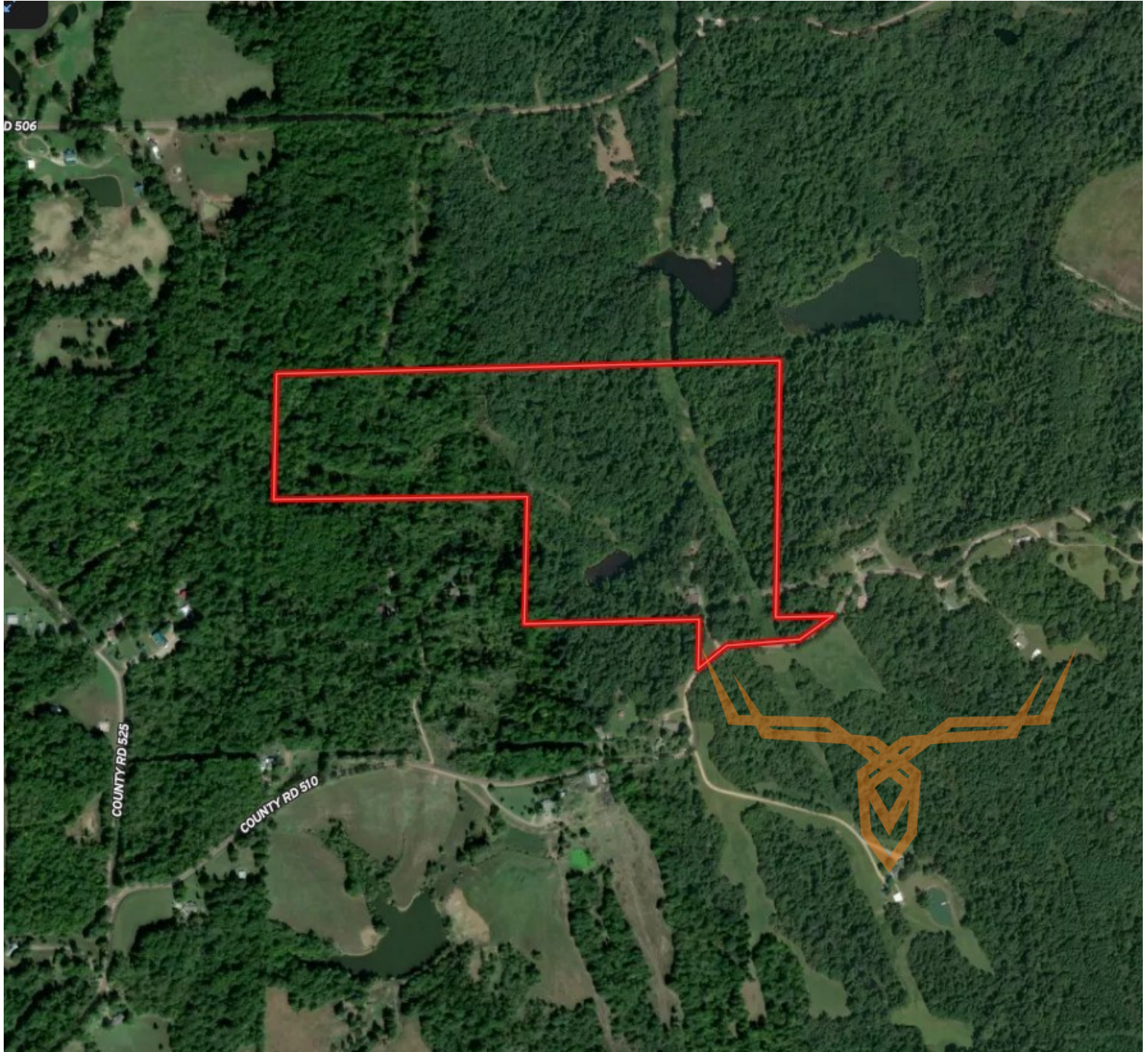




**T R O P H Y**  
PROPERTIES AND AUCTION  
LAND | RECREATIONAL | RESIDENTIAL

## Stoddard County Missouri Real Estate for Sale at Auction - Bridgewater Home & Acreage

[www.TrophyPA.com](http://www.TrophyPA.com) • (855) 573-5263 • [leads@trophy.com](mailto:leads@trophy.com)



The information is believed to be accurate; however, no liability for its accuracy, errors or omissions is assumed. All lines are drawn on maps, photographs, etc. are approximate. Buyers should verify the information to their satisfaction. There are no expressed or implied warranties pertaining to this property. Both real estate (including all improvements, if any) is being sold As Is, Where Is with NO warranties expressed or implied. Please make all inspections and have financing arranged prior to the end of bidding.