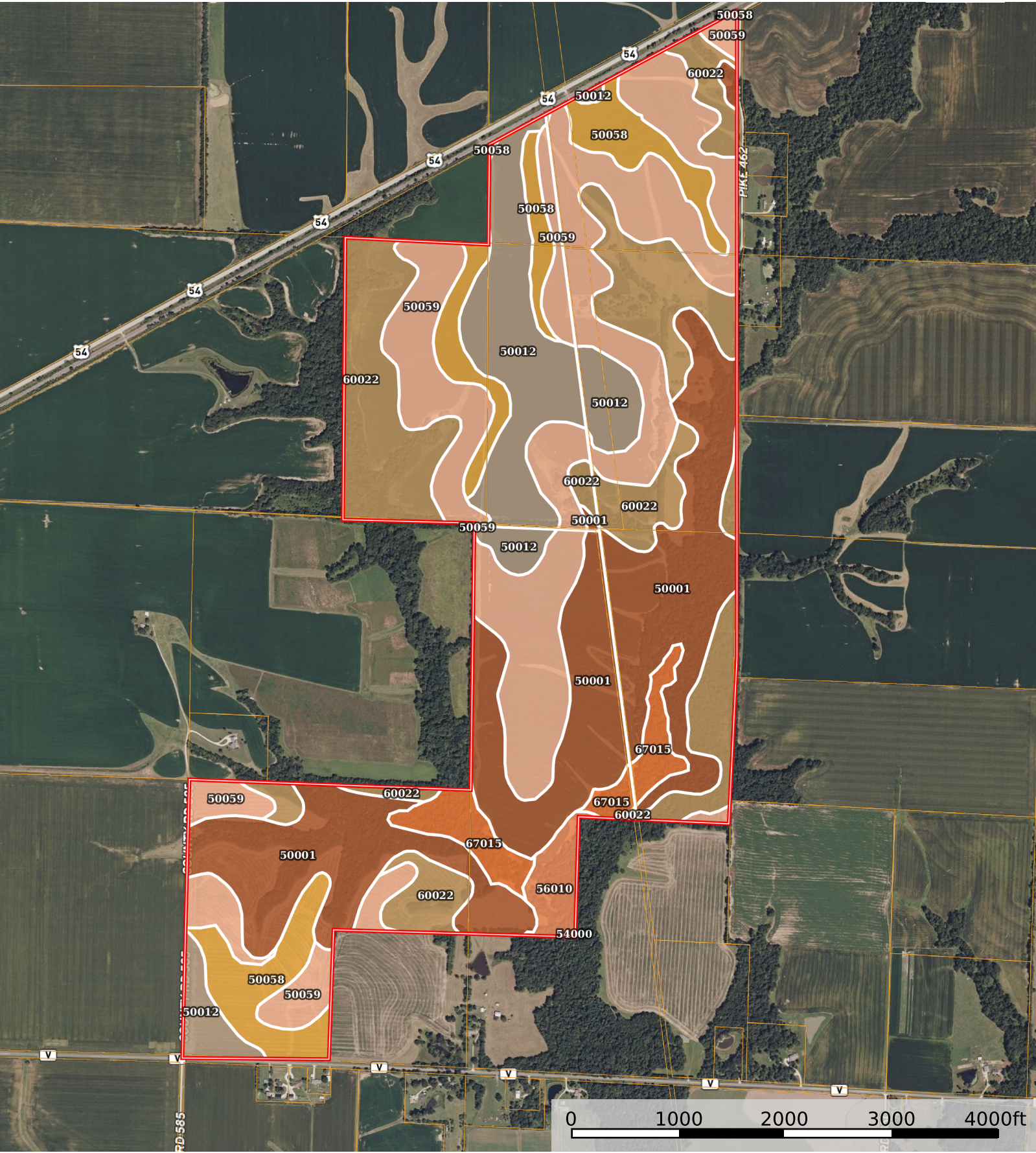


galloway soils map
Missouri, AC +/-



Boundary

|  Boundary 611.66 ac

SOIL CODE	SOIL DESCRIPTION	ACRES	%	CPI	NCCPI	CAP
50059	Mexico silt loam, 1 to 4 percent slopes, eroded	168.56	27.55	0	72	3e
50001	Armstrong loam, 5 to 9 percent slopes, eroded	164.9	26.96	0	66	4e
60022	Leonard silt loam, 1 to 6 percent slopes, eroded	120.51	19.7	0	61	3e
50012	Putnam silt loam, 0 to 1 percent slopes	72.07	11.78	0	65	3w
50058	Mexico silt loam, 0 to 2 percent slopes	53.77	8.79	0	76	3w
67015	Belknap silt loam, 1 to 3 percent slopes, frequently flooded	22.23	3.63	0	60	3w
56010	Belknap silt loam, 0 to 2 percent slopes, frequently flooded	9.59	1.57	0	67	3w
54000	Chariton silt loam, 0 to 2 percent slopes, rarely flooded	0.03	0.0	0	73	3w
TOTALS		611.66(*)	100%	-	67.22	3.27









(*) Total acres may differ in the second decimal compared to the sum of each acreage soil. This is due to a round error because we only show the acres of each soil with two decimal.

Capability Legend

Increased Limitations and Hazards

Decreased Adaptability and Freedom of Choice Users

Land, Capability

								
	1	2	3	4	5	6	7	8
'Wild Life'	•	•	•	•	•	•	•	•
Forestry	•	•	•	•	•	•	•	
Limited	•	•	•	•	•	•	•	
Moderate	•	•	•	•	•	•		
Intense	•	•	•	•	•			
Limited	•	•	•	•				
Moderate	•	•	•					
Intense	•	•						
Very Intense	•							

Grazing Cultivation

(c) climatic limitations (e) susceptibility to erosion

(s) soil limitations within the rooting zone (w) excess of water