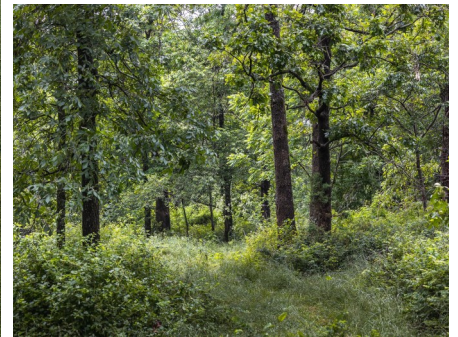




**T R O P H Y**  
PROPERTIES AND AUCTION  
LAND | RECREATIONAL | RESIDENTIAL

# Endless Possibilities Await With 125± Acres of Scenic Bliss For Sale—Barry County

www.TrophyPA.com • (855) 573-5263 • leads@trophyapa.com



## PROPERTY ADDRESS:

00 Farm Road 1200  
Crane, MO 65633

**PRICE:** \$985,000

**ACRES:** 124.23±

**COUNTY:** Barry

## PROPERTY HIGHLIGHTS:

- 125± acres of gently rolling land in Barry County
- Multiple ponds and a flowing creek
- Solar-powered electric fencing
- Fully fenced and cross-fenced
- Wooded areas provide privacy, shade, and wildlife habitat
- Multiple potential build sites
- No zoning or restrictions
- Also available in 66+/- and 58+/- acre tracts, or custom divisions

## PROPERTY DESCRIPTION:

Discover 125± acres of prime land in Barry County that offers boundless potential without zoning restrictions! This stunning property uniquely combines gently rolling grasslands, picturesque wooded areas, and several water features, including ponds and a flowing creek. It is completely fenced and cross-fenced with solar-powered electric fencing, making it an ideal setup for livestock, farming, or as a serene rural retreat. With numerous potential building sites that provide breathtaking panoramic views, this land is perfect for establishing an estate, constructing a homestead, or embarking on a development project. Conveniently located just minutes south of Walmart, the property is within easy reach of Springfield, Branson, and Aurora, ensuring peaceful seclusion while still being close to urban amenities. In addition to being offered as a single large tract, the land can also be divided into two smaller parcels—approximately 66 acres and 58 acres—allowing for further customization to fit your specific vision. Whether your goal is to build a dream home, invest in property, farm, or develop, this land presents an incredible opportunity. Take advantage of this unique opportunity to claim your piece of the stunning Ozarks!



**PRESENTED BY:**

**RASHELL BURKE**

**Land & Home Specialist**

M: (660) 723-0414

P: (855) 573-5263 x774

E: rburke@trophyapa.com

**Trophy Properties and Auction**

640 Cepi Drive, Suite 100

Chesterfield, MO 630056

www.Trophyapa.com

leads@trophyapa.com





**T R O P H Y**  
PROPERTIES AND AUCTION  
LAND | RECREATIONAL | RESIDENTIAL

# Endless Possibilities Await With 125± Acres of Scenic Bliss For Sale—Barry County

[www.TrophyPA.com](http://www.TrophyPA.com) • (855) 573-5263 • [leads@trophyPA.com](mailto:leads@trophyPA.com)

2020 & 1200 Crane, MO, 65633

Missouri, AC +/-



RaShell Burke  
P: 660-723-0414

[www.TrophyPA.com](http://www.TrophyPA.com)

640Cepi Drive, Suite 100, Chesterfield, MO 63005

Broker does not guarantee the accuracy of sq. ft., lot size, or other information, buyer is advised to independently verify the accuracy of information through personal inspection and with appropriate professionals