



**T R O P H Y**  
PROPERTIES AND AUCTION  
LAND | RECREATIONAL | RESIDENTIAL

# 406± Acre Recreational Farm for Sale - Boone County

www.TrophyPA.com • (855) 573-5263 • leads@trophyapa.com



## PROPERTY ADDRESS:

00 Talley Road  
Hartsburg, MO 65039

**PRICE:** \$4,084,000

**ACRES:** 406±

**COUNTY:** Boone

## PROPERTY HIGHLIGHTS:

- 406± Acres
- Public Utilities on Site
- Missouri River Views
- Great Building Sites
- Extensive Trail Network
- 10min to Jeff City
- 15min to Columbia

## PROPERTY DESCRIPTION:

A rare opportunity to own a beautiful stretch of land along the Missouri River in Southern Boone County. This 406 m/l acre property sits in a prime location, just 10 minutes north of Jefferson City and 15 minutes south of Columbia, with access to Highway 63 and public utilities on site, including county water, electric, & gas.

The property offers multiple ridge-top building sites with stunning river views, making it a great option for a private retreat, hunting lodge, or development. An extensive trail system winds through few fields great for a horses or small herd of cattle, then into mature timber and creek beds, providing excellent opportunities for horseback riding, hiking, or UTVs. Deer and turkey sign are abundant, making this an ideal hunting farm.

The property includes a pavilion and small hunting cabins great for a family get-together. The land also borders the Katy Trail, adding another layer of recreational



## PRESENTED BY:

**PAUL DILLER**

**Land Specialist**

M: (636) 262-6352

P: (855) 573-5263 x742

E: pdiller@trophyapa.com

**Trophy Properties and Auction**

640 Cepi Drive, Suite 100  
Chesterfield, MO 630056

www.Trophyapa.com  
leads@trophyapa.com





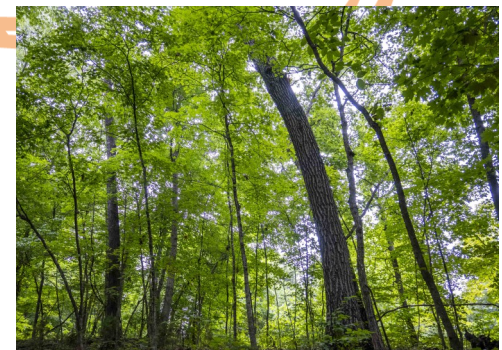
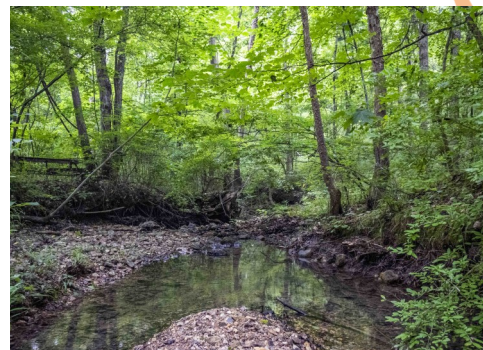
**T R O P H Y**  
PROPERTIES AND AUCTION  
LAND | RECREATIONAL | RESIDENTIAL

# 406± Acre Recreational Farm for Sale - Boone County

[www.TrophyPA.com](http://www.TrophyPA.com) • (855) 573-5263 • [leads@trophy.com](mailto:leads@trophy.com)

appeal. There is a nice, wide trail from the ridgetops to the Katy. You also have access to the Missouri River and about 15 acres of bottom ground in massive cottonwoods and a couple acres of tillable, great for hunting.

Whether you're looking for a place to build, hunt, or simply enjoy the outdoors, this property offers a unique combination of natural beauty, privacy, and convenience.



Broker does not guarantee the accuracy of sq. ft., lot size, or other information, buyer is advised to independently verify the accuracy of information through personal inspection and with appropriate professionals

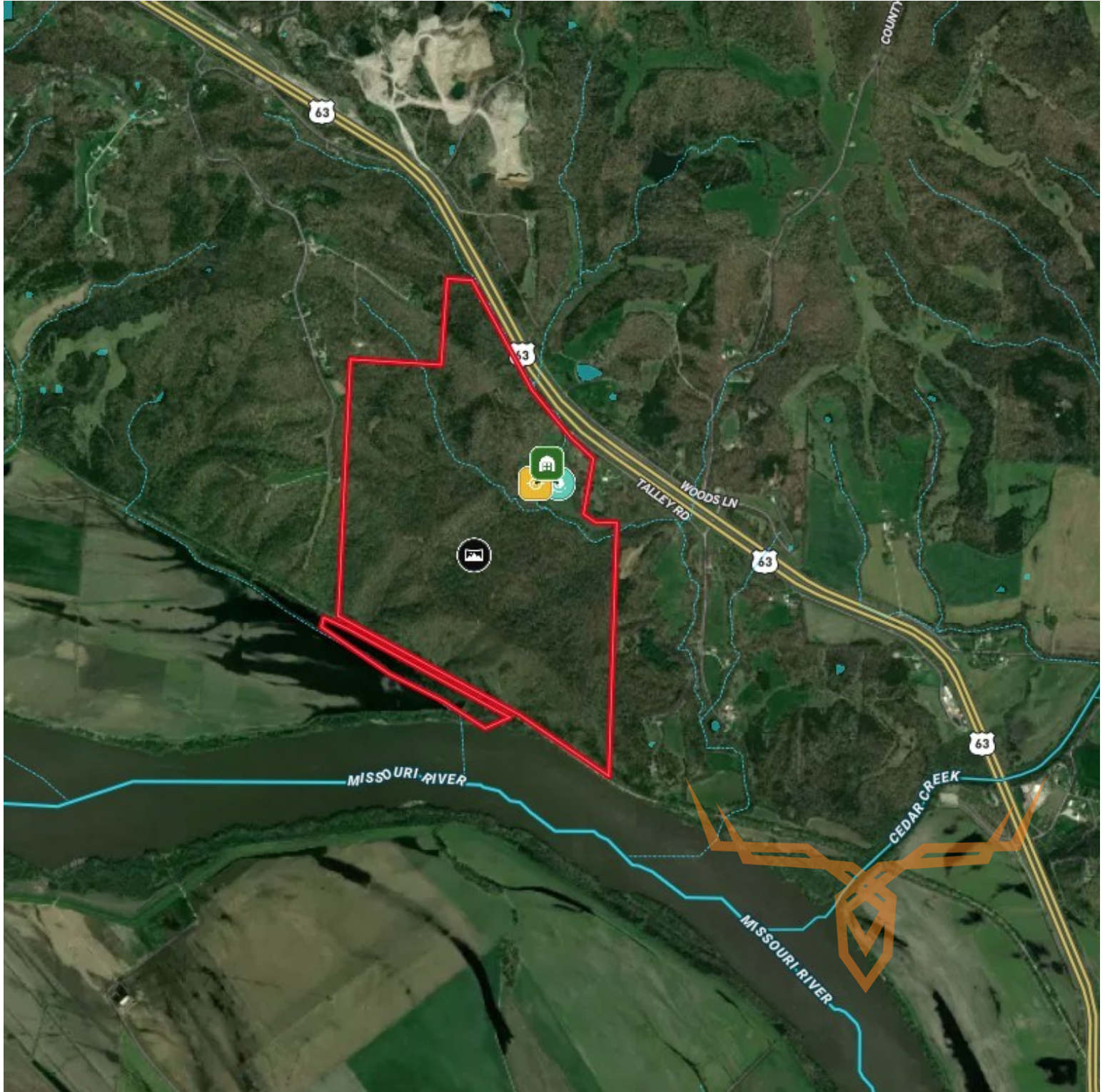




**T R O P H Y**  
PROPERTIES AND AUCTION  
LAND | RECREATIONAL | RESIDENTIAL

# 406± Acre Recreational Farm for Sale - Boone County

[www.TrophyPA.com](http://www.TrophyPA.com) • (855) 573-5263 • [leads@trophy.com](mailto:leads@trophy.com)



Broker does not guarantee the accuracy of sq. ft., lot size, or other information, buyer is advised to independently verify the accuracy of information through personal inspection and with appropriate professionals