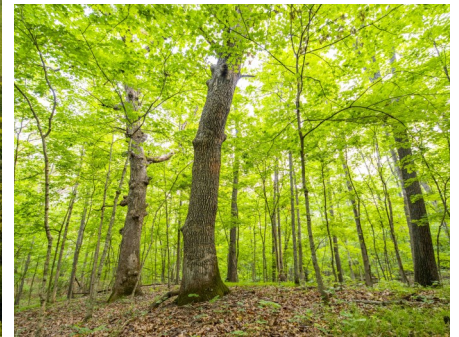




Boone County Missouri Land for Sale at iAuction - Ewens Trust

www.TrophyPA.com • (855) 573-5263 • leads@trophyapa.com



PROPERTY ADDRESS:
00 N. Lipscomb Road
Sturgeon, MO 65284

ACRES: 62±
COUNTY: Boone

AUCTION DETAILS:

Property Preview Saturday, August 19th 9AM to 11AM.

Bidding Ends Wednesday, September 6th at 10AM.

Welcome to your own piece of paradise in Boone County, Missouri! These 62± acres are a nature lover's dream, offered in two tracts, featuring gently rolling terrain, mature hardwoods, and cedar trees scattered throughout the property. If you're an outdoors enthusiast, you'll be thrilled to know that this land is teeming with abundant whitetail deer sign, making it a true haven for hunting and wildlife observation.

Recreational therapy is at your fingertips, as this tranquil retreat is conveniently located within minutes of Columbia, MO. Whether you want to escape the city for a weekend getaway or establish a permanent residence that embraces the serenity of nature, this property caters to your desires.

Situated at the end of the county road, you'll relish the seclusion and privacy that this location provides, creating the perfect setting to unwind and immerse yourself in the beauty of the surrounding landscape.



PRESENTED BY:

JESSE KLINGLER
Real Estate Consultant
M: (636) 699-5208
P: (855) 573-5263 x714
E: jklingler@trophyapa.com

Trophy Properties and Auction
15480 Clayton Road
Suite 101
Ballwin, MO 63011
www.Trophyapa.com
leads@trophyapa.com



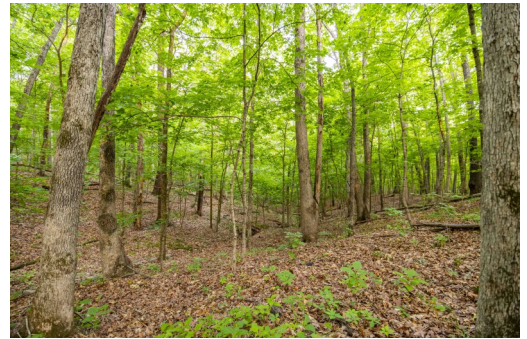
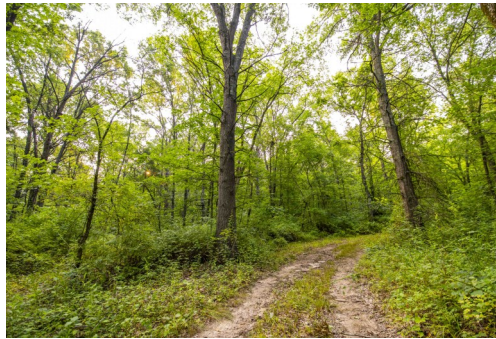
Boone County Missouri Land for Sale at iAuction - Ewens Trust

www.TrophyPA.com • (855) 573-5263 • leads@trophyapa.com

Don't miss this incredible opportunity to own your personal slice of heaven in Boone County. For more information or to schedule a viewing, don't hesitate to contact **Jesse Klingler (636) 699-5208**. Embrace the bliss of nature and make this property yours today!

Tract 1: 34± acres of gently rolling terrain with mature hardwoods and cedar thickets.

Tract 2: 28± acres of gently rolling terrain with mature hardwoods and cedar thickets.



The information is believed to be accurate; however, no liability for its accuracy, errors or omissions is assumed. All lines are drawn on maps, photographs, etc. are approximate. Buyers should verify the information to their satisfaction. There are no expressed or implied warranties pertaining to this property. Both real estate (including all improvements, if any) is being sold As Is, Where Is with NO warranties expressed or implied. Please make all inspections and have financing arranged prior to the end of bidding.



T R O P H Y
PROPERTIES AND AUCTION
LAND | RECREATIONAL | RESIDENTIAL

Boone County Missouri Land for Sale at iAuction - Ewens Trust

www.TrophyPA.com • (855) 573-5263 • leads@trophy.com



The information is believed to be accurate; however, no liability for its accuracy, errors or omissions is assumed. All lines are drawn on maps, photographs, etc. are approximate. Buyers should verify the information to their satisfaction. There are no expressed or implied warranties pertaining to this property. Both real estate (including all improvements, if any) is being sold As Is, Where Is with NO warranties expressed or implied. Please make all inspections and have financing arranged prior to the end of bidding.