



114± Acres of Prime Hunting & Investment Ground Along Mill Creek for Sale—Bourbon County

T R O P H Y
PROPERTIES AND AUCTION
LAND | RECREATIONAL | RESIDENTIAL

www.TrophyPA.com • (855) 573-5263 • leads@trophyapa.com



PROPERTY ADDRESS:

00 Prairie Road
Fort Scott, KS 66701

PRICE: \$655,500

ACRES: 114±

COUNTY: Bourbon

PROPERTY HIGHLIGHTS:

- 114± Acres
- 60 acres highly productive, tillable ground
- Mill Creek makes up the Southern border
- Great deer history
- 2 Diamond Blinds
- 2 All Seasons Feeders

PROPERTY DESCRIPTION:

This 114+/- acre property offers the perfect combination of income-producing farmland and outstanding recreational potential. With approximately 60 acres of highly productive river bottom tillable ground, it provides a reliable annual income and excellent soils for crop production.

Mill Creek stretches across the entire southern border, offering a year-round water source, scenic views, and enhanced wildlife habitat. The property boasts a strong history of both whitetail and turkey success, making it a proven hunting destination.

To elevate your hunting experience, two new Diamond Blinds and two All Seasons feeders are already in place and will convey with the property—providing turnkey value for the serious outdoorsman.

Whether you're looking for a solid investment, a recreational retreat, or both, this diverse tract delivers on every level.



PRESENTED BY:

CODY CUTLER

Land Specialist

M: (620) 224-6003

P: (855) 573-5263 x756

E: ccutler@trophyapa.com

Trophy Properties and Auction

640 Cepi Drive, Suite 100
Chesterfield, MO 630056

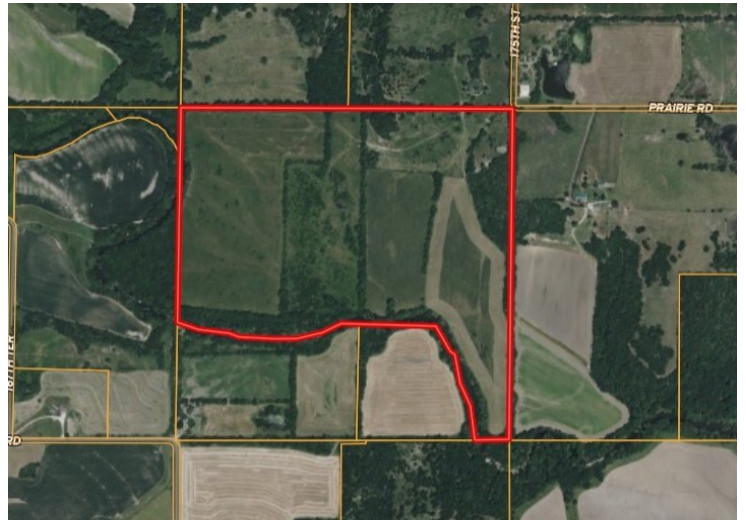
www.Trophyapa.com
leads@trophyapa.com



T R O P H Y
PROPERTIES AND AUCTION
LAND | RECREATIONAL | RESIDENTIAL

114± Acres of Prime Hunting & Investment Ground Along Mill Creek for Sale—Bourbon

www.TrophyPA.com • (855) 573-5263 • leads@trophyPA.com



Broker does not guarantee the accuracy of sq. ft., lot size, or other information, buyer is advised to independently verify the accuracy of information through personal inspection and with appropriate professionals