



**T R O P H Y**  
PROPERTIES AND AUCTION  
LAND | RECREATIONAL | RESIDENTIAL

# 80± Acre Kansas Hunting Tract for Sale - Bourbon County

www.TrophyPA.com • (855) 573-5263 • leads@trophy.com

**PRICE IMPROVED**



**PROPERTY ADDRESS:**

00 Fern Road  
Ft. Scott, KS 66701

**PRICE:** \$346,417

**ACRES:** 81.51

**COUNTY:** Bourbon

**PROPERTY HIGHLIGHTS:**

- Mature timber
- 2 ponds
- 2 creeks
- Rural water hookup
- Electric capabilities
- 1250lb All Seasons Feeder & 750lb Redneck feeder will convey

**PROPERTY DESCRIPTION:**

Nestled on 80± acres of picturesque land, this property offers a blend of natural beauty and practical amenities. With an abundance of mature timber, two creeks, and two ponds, this parcel is perfect for nature enthusiasts and outdoor enthusiasts alike.

Equipped with a rural water meter and electric capabilities, this property can provide the convenience of modern living in a rural setting if desired. Whether you're considering raising livestock or seeking a prime location for hunting, this versatile acreage caters to a variety of lifestyles.

For the avid hunter, the property comes complete with an All Season 1250 lb. feeder and a Redneck 750 lb. feeder, ensuring a seamless and efficient wildlife management

**PRESENTED BY:**

**CODY CUTLER**

Land Specialist

M: (620) 224-6003  
O: (855) 573-5263 x 756  
E: ccutler@trophy.com

**KYLA HALSEY**

Residential & Land Agent

M: (620) 215-5868  
O: (855) 573-5263 x 717  
E: khalsey@trophy.com

Trophy Properties and Auction  
15480 Clayton Road, Ste. 101  
Ballwin, MO 63011  
(636) 527-5263  
www.trophy.com



# 80± Acre Kansas Hunting Tract for Sale - Bourbon County

**T R O P H Y**  
PROPERTIES AND AUCTION  
LAND | RECREATIONAL | RESIDENTIAL

[www.TrophyPA.com](http://www.TrophyPA.com) • (855) 573-5263 • [leads@trophy.com](mailto:leads@trophy.com)

experience.

Seize the opportunity to own this remarkable 80± acre property, where the beauty of nature meets the practicality of modern living. Embrace the potential for a life filled with outdoor adventures and the tranquility of rural living.



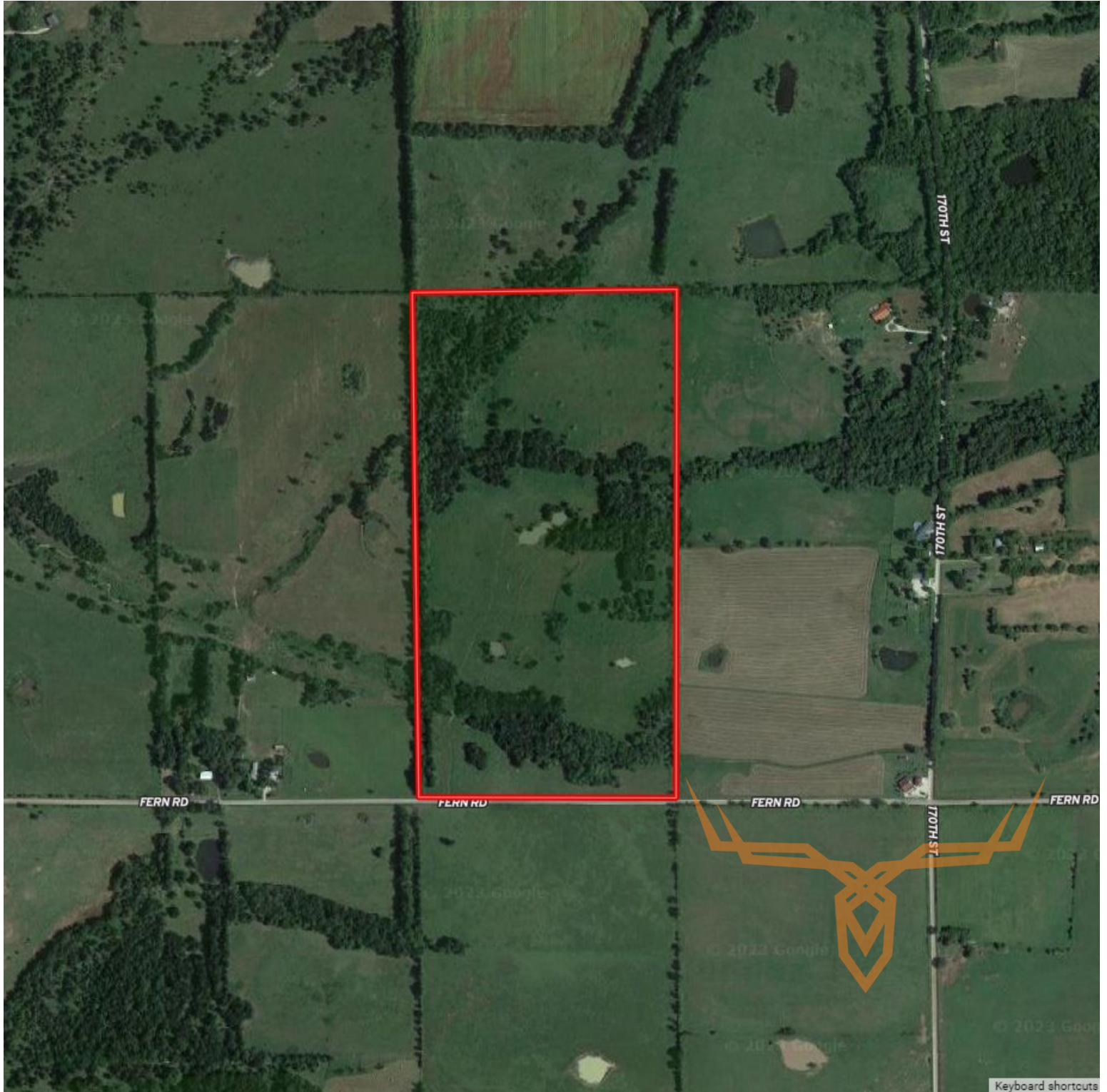
Broker does not guarantee the accuracy of sq. ft., lot size, or other information, buyer is advised to independently verify the accuracy of information through personal inspection and with appropriate professionals



# 80± Acre Kansas Hunting Tract for Sale - Bourbon County

**T R O P H Y**  
PROPERTIES AND AUCTION  
LAND | RECREATIONAL | RESIDENTIAL

[www.TrophyPA.com](http://www.TrophyPA.com) • (855) 573-5263 • [leads@trophy.com](mailto:leads@trophy.com)



Broker does not guarantee the accuracy of sq. ft., lot size, or other information, buyer is advised to independently verify the accuracy of information through personal inspection and with appropriate professionals