



T R O P H Y
PROPERTIES AND AUCTION
LAND | RECREATIONAL | RESIDENTIAL

Escape to Nature With 103.7 Acres of Prime Property For Sale—Camden County

www.TrophyPA.com • (855) 573-5263 • leads@trophyapa.com



PROPERTY ADDRESS:

830 Oak Valley Drive
Linn Creek, MO 65052

PRICE: \$498,000

ACRES: 103.7

COUNTY: Camden

PROPERTY HIGHLIGHTS:

- 103.70 Surveyed Acres
- 32 x 40 Cabin
- 700 sq ft +/- Living
- Attached Pull-Through Garage
- 16 x 40 3-Bay Shop
- Well & Well House
- Septic & Electric
- Creek/ Pond
- Large Fenced Garden
- Orchard
- Native Plantings
- Gated & Fenced
- Incredible Hunting
- Minutes From The Water

PROPERTY DESCRIPTION:

Escape to a stunning 103.7-acre property at Lake of the Ozarks, just minutes from Camdenton and Osage Beach. This rare gem offers diverse landscapes, from mature timber to rolling creek valley fields, perfect for outdoor enthusiasts and nature lovers. Explore the extensive interior trail system by foot, horseback, or UTV, while enjoying abundant wildlife, including trophy white-tail deer and wild turkey. A clear valley creek and serene pond enhance the natural beauty, creating an ideal setting for year-round enjoyment. At the heart of the property is a charming one-bedroom, one-bath cabin, designed for comfort with a fully equipped kitchen, cozy living area, mini-split HVAC, and a heated pull-through garage. A detached three-bay shop provides additional storage and workspace. This self-sufficient paradise features a large fenced garden, an orchard of semi-dwarf fruit trees, and native berry bushes, perfect for sustainable living. Utilities are already set up, including a deep well and septic system, allowing you to move right in. While private, the property is conveniently close to Lake of the Ozarks amenities. Don't miss this rare opportunity to own a piece of paradise for hunting, farming, and outdoor exploration. Your dream retreat awaits!



PRESENTED BY:

JUSTIN SWAST

Land Specialist

M: (314) 805-0202

P: (855) 573-5263 x775

E: jswast@trophyapa.com

Trophy Properties and Auction

640 Cepi Drive, Suite 100
Chesterfield, MO 630056

www.Trophyapa.com
leads@trophyapa.com



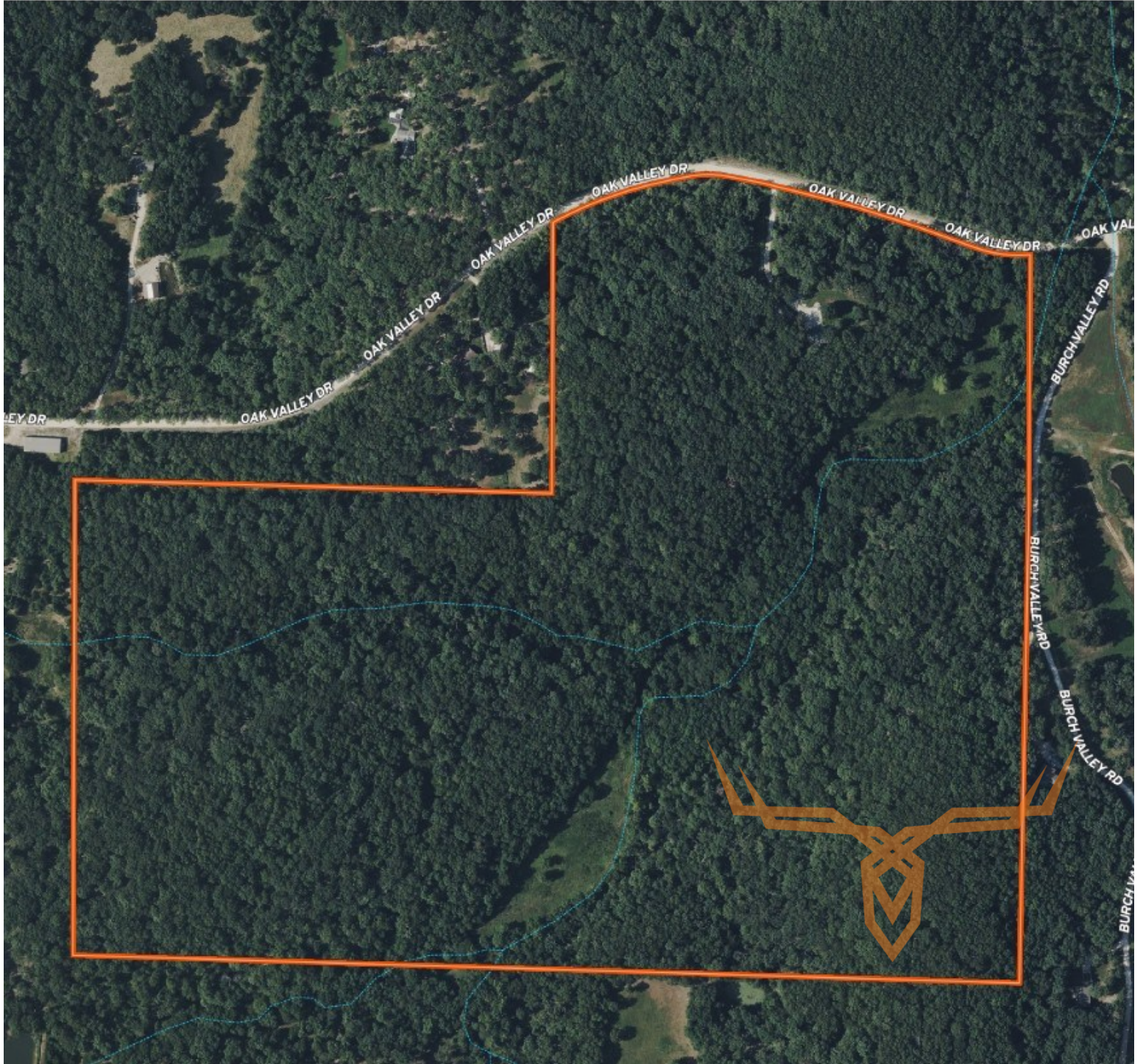
Escape to Nature With 103.7 Acres of Prime Property For Sale—Camden County

T R O P H Y
PROPERTIES AND AUCTION
LAND | RECREATIONAL | RESIDENTIAL

www.TrophyPA.com • (855) 573-5263 • leads@trophyapa.com

Camden 103.70

Camden County, Missouri, 103.7 AC +/-



Broker does not guarantee the accuracy of sq. ft., lot size, or other information, buyer is advised to independently verify the accuracy of information through personal inspection and with appropriate professionals