

Secluded 30±-Acre Property Ideal for Recreation & Hunting for Sale—Cedar County

www.TrophyPA.com • (855) 573-5263 • leads@trophyapa.com



PROPERTY ADDRESS:

00 County Road 2851
Humansville, MO 65674

PRICE: \$164,700

ACRES: 30±

COUNTY: Cedar

PROPERTY HIGHLIGHTS:

- 30±- Recreational Acres
- Minutes to Stockton Lake
- 25 minutes to Boliva
- Great Build Sites
- Turkey Creek
- Water Well
- Electric Access
- 4 m/l Open Acres
- Mature Timber
- Established Trail System
- Secluded Dead-End Road
- Great Deer and Turkey Habitat

PROPERTY DESCRIPTION: Discover your own private retreat with this 30+/- acre recreational property nestled at the end of a quiet dead-end road in NE Cedar County, offering true Ozark seclusion. Just minutes from Stockton Lake, this secluded haven boasts mature timber, consisting of a variety of species, along with some nice walnuts and white oaks. The property features Turkey Creek cutting through the heart of the property, providing fertile creek bottoms. This property features electric access, an existing water well, and approximately 4 open acres ideal for food plots, and several spots to choose from to build a cabin or home. This property is perfect for those seeking both adventure and tranquility.

The land is a paradise for outdoor enthusiasts, offering an established trail system that allows easy access throughout the property. Abundant wildlife, including whitetail deer and wild turkeys, thrives in the diverse habitat of timber and open creek bottom, making it an ideal hunting or recreational property. With great build sites and 4 m/l open acres, this property offers endless possibilities for hunting, hiking, and outdoor fun. Whether you're looking to build a cabin or simply enjoy the natural beauty, this secluded tract provides the perfect setting for a peaceful escape.



PRESENTED BY:

WAYLON MARTIN

Land Specialist

M: (417) 410-5964

P: (855) 573-5263 x712

E: wmartin@trophyapa.com

Trophy Properties and Auction

640 Cepi Drive, Suite 100

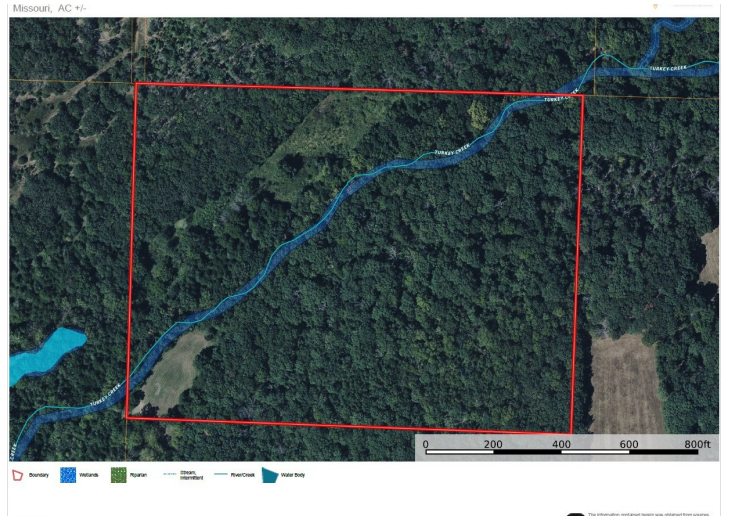
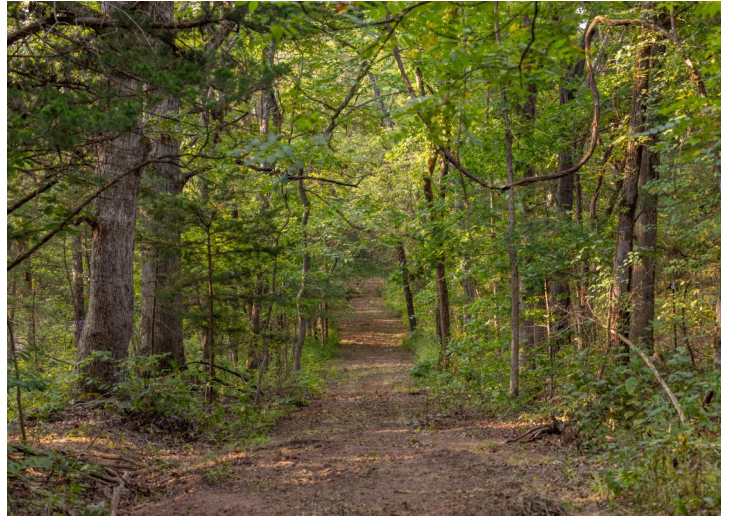
Chesterfield, MO 630056

www.Trophyapa.com

leads@trophyapa.com

Secluded 30±-Acre Property Ideal for Recreation & Hunting for Sale—Cedar County

www.TrophyPA.com • (855) 573-5263 • leads@trophyapa.com



Broker does not guarantee the accuracy of sq. ft., lot size, or other information, buyer is advised to independently verify the accuracy of information through personal inspection and with appropriate professionals