

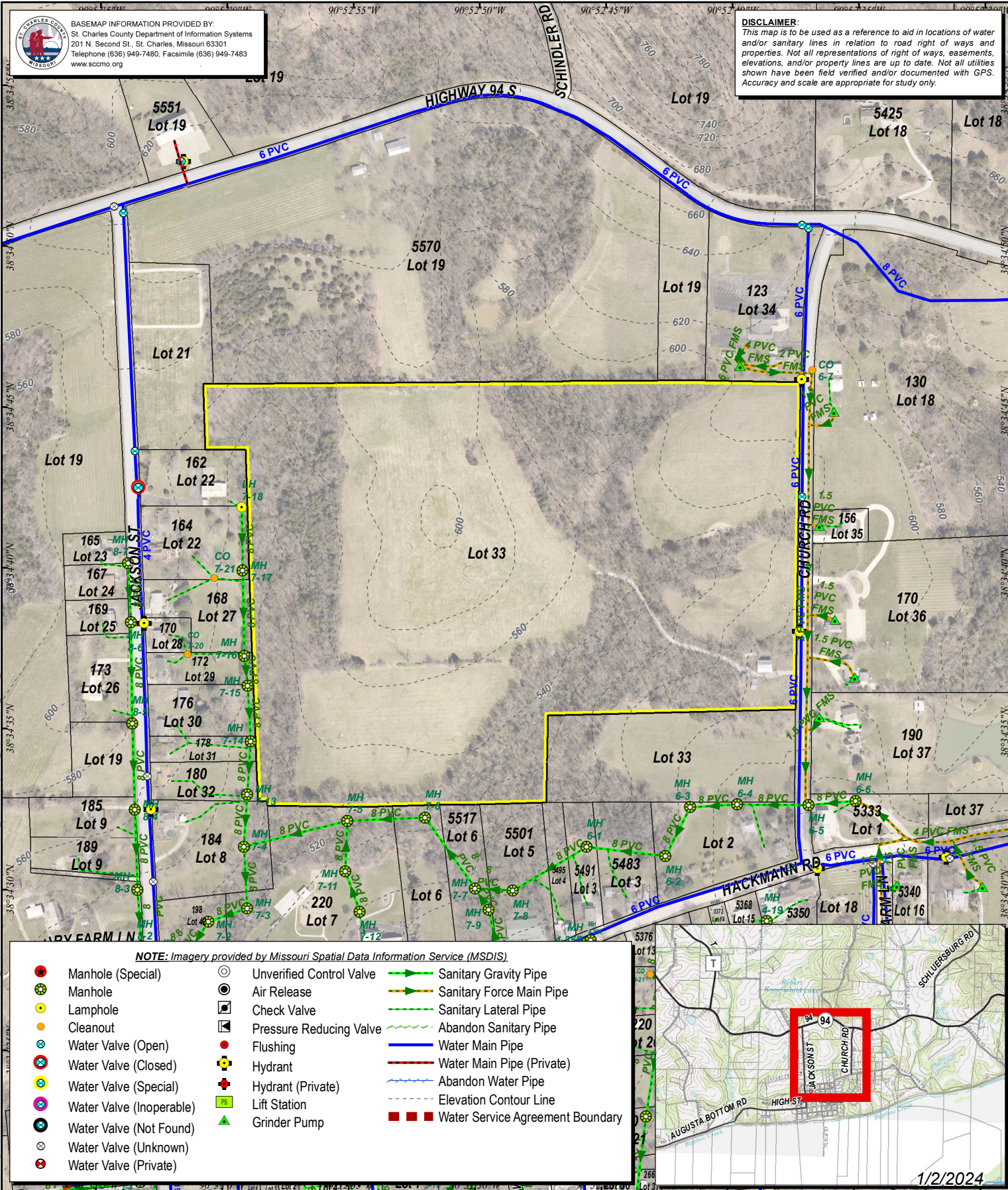


BASEMAP INFORMATION PROVIDED BY:
St. Charles County Department of Information Systems
201 N. Second St., St. Charles, Missouri 63301
Telephone (636) 949-7480, Facsimile (636) 949-7483
www.sccmo.org

DISCLAIMER:

This map is to be used as a reference to aid in locations of water and/or sanitary lines in relation to road right of ways and properties. Not all representations of right of ways, easements, elevations, and/or property lines are up to date. Not all utilities shown have been field verified and/or documented with GPS. Accuracy and scale are appropriate for study only.

User: bing/s Location: G:\GIS Maps\LocateRequests\8x10-Portrait_2022_Ver1.mxd Printed: 1/2/2024



NOTE: Imagery provided by Missouri Spatial Data Information Service (MSDIS)

- | | | |
|----------------------------|----------------------------|------------------------------------|
| ● Manhole (Special) | ○ Unverified Control Valve | → Sanitary Gravity Pipe |
| ● Manhole | ○ Air Release | → Sanitary Force Main Pipe |
| ● Lamphole | ○ Check Valve | → Sanitary Lateral Pipe |
| ● Cleanout | ○ Pressure Reducing Valve | → Abandon Sanitary Pipe |
| ○ Water Valve (Open) | ● Flushing | → Water Main Pipe |
| ○ Water Valve (Closed) | ● Hydrant | → Water Main Pipe (Private) |
| ○ Water Valve (Special) | ● Hydrant (Private) | → Abandon Water Pipe |
| ○ Water Valve (Inoperable) | ● Lift Station | → Elevation Contour Line |
| ○ Water Valve (Not Found) | ● Grinder Pump | ■ Water Service Agreement Boundary |
| ○ Water Valve (Unknown) | | |
| ○ Water Valve (Private) | | |

