



Dekalb County Missouri Land for Sale at iAuction - Cooper Farm

www.TrophyPA.com • (855) 573-5263 • leads@trophy.com



BIDDING ENDS THURSDAY, OCTOBER 19TH AT 10:00 AM
SEE FULL TERMS & CONDITIONS AT WWW.TROPHYPA.COM



PROPERTY ADDRESS:

00 NE Heimbaugh Road
Pattonsburg, MO 64670

ACRES: 80

COUNTY: Dekalb

AUCTION DETAILS:

Preview Day Saturday, October 7th 9AM to 11AM.

Bidding Ends Thursday, October 19th at 10AM.

Presenting 80± acres of farmland in Dekalb County, MO, near Pattonsburg. The Farm Service Agency shows there to be 73.45 acres of highly productive cropland. The soils consist mostly of Lamoni and Grundy type.

The balance of the land consists of a wooded draw that does offer some hunting opportunities. While viewing the farm there was sign of deer everywhere. It's a for sure travel corridor and traffic will only increase during the heat of the rut.

This farm stands out as a compelling investment opportunity, with 91% being tillable. Such a composition not only underscores its agricultural significance but also makes it an enticing addition to any investor's portfolio.



PRESENTED BY:

SAM VOSS

Land Specialist - KS & MO

M: (913) 526-9369

P: (855) 573-5263 x745

E: svoss@trophy.com

Trophy Properties and Auction

15480 Clayton Road

Suite 101

Ballwin, MO 63011

www.Trophy.com

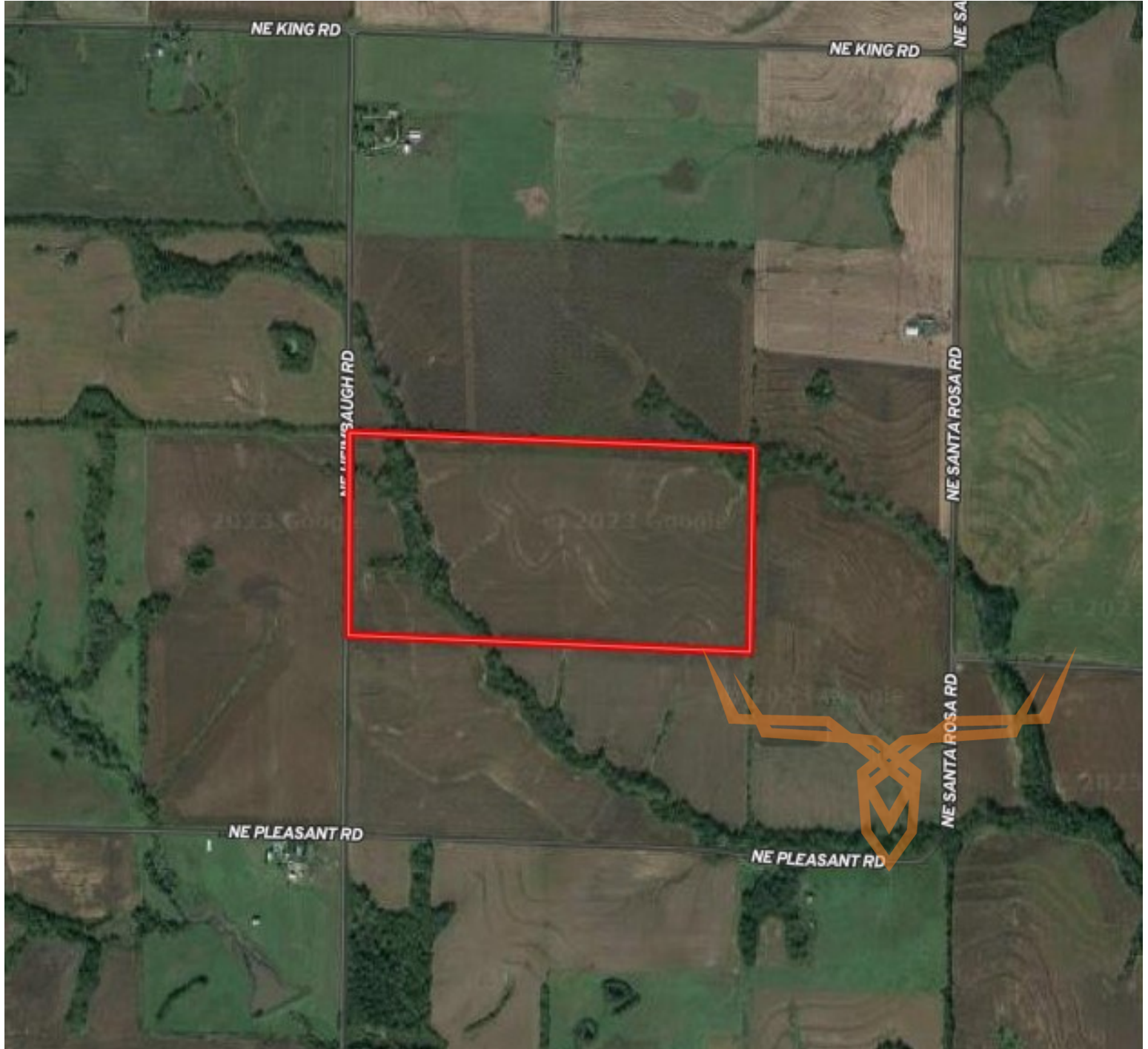
leads@trophy.com



T R O P H Y
PROPERTIES AND AUCTION
LAND | RECREATIONAL | RESIDENTIAL

Dekalb County Missouri Land for Sale at iAuction - Cooper Farm

www.TrophyPA.com • (855) 573-5263 • leads@trophyPA.com



The information is believed to be accurate; however, no liability for its accuracy, errors or omissions is assumed. All lines are drawn on maps, photographs, etc. are approximate. Buyers should verify the information to their satisfaction. There are no expressed or implied warranties pertaining to this property. Both real estate (including all improvements, if any) is being sold As Is, Where Is with NO warranties expressed or implied. Please make all inspections and have financing arranged prior to the end of bidding.