



T R O P H Y
PROPERTIES AND AUCTION
LAND | RECREATIONAL | RESIDENTIAL

Pike County Illinois Land for Sale at Auction - Bacus Farm

www.TrophyPA.com • (855) 573-5263 • leads@trophyapa.com



BIDDING ENDS TUESDAY, OCTOBER 8TH AT 10:00 AM
SEE FULL TERMS & CONDITIONS AT WWW.TROPHYPA.COM



PROPERTY ADDRESS:

00 Time Road
Nebo, IL 62355

ACRES: 41±
COUNTY: Pike

AUCTION DETAILS:

Preview Day Saturday, September 28th 1PM to 3PM.

Bidding Ends Tuesday, October 8th at 10AM.

These 41± gently rolling to rolling acres are conveniently 5 miles south of the village of Time. The land represents outstanding deer and turkey hunting and recreation in a highly sought-after area. This wooded tract consists of mature hardwoods and thickets with a small creek meandering through. The fresh trails and old rubs are sure to excite most all hunters. The farm is 20 minutes from Pittsfield and approximately 65 miles to Alton and 90 miles to Chesterfield, MO. Tracts of land this size rarely hit the market. Make plans to tour this property. You won't be disappointed!



PRESENTED BY:

KIM CHISHOLM

Land & Home Specialist

M: (618) 535-0316

P: (855) 573-5263 x765

E: kchisholm@trophyapa.com

Trophy Properties and Auction

640 Cepi Drive

Suite 100

Chesterfield, MO 63005

www.Trophyapa.com

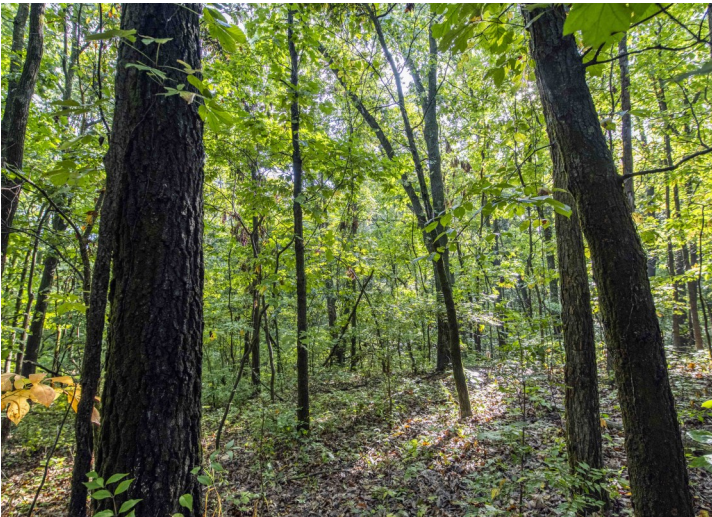
leads@trophyapa.com



T R O P H Y
PROPERTIES AND AUCTION
LAND | RECREATIONAL | RESIDENTIAL

Pike County Illinois Land for Sale at Auction - Bacus Farm

www.TrophyPA.com • (855) 573-5263 • leads@trophyPA.com





T R O P H Y
PROPERTIES AND AUCTION
LAND | RECREATIONAL | RESIDENTIAL

Pike County Illinois Land for Sale at Auction - Bacus Farm

www.TrophyPA.com • (855) 573-5263 • leads@trophyPA.com



The information is believed to be accurate; however, no liability for its accuracy, errors or omissions is assumed. All lines are drawn on maps, photographs, etc. are approximate. Buyers should verify the information to their satisfaction. There are no expressed or implied warranties pertaining to this property. Both real estate (including all improvements, if any) is being sold As Is, Where Is with NO warranties expressed or implied. Please make all inspections and have financing arranged prior to the end of bidding.