

# Franklin County Missouri Land for Sale at iAuction - Tierney Property

www.TrophyPA.com • (855) 573-5263 • leads@trophyapa.com



**PROPERTY ADDRESS:**  
9084 Hwy HH  
Robertsville, MO 63072

**ACRES:** 60±  
**COUNTY:** Franklin

## AUCTION DETAILS:

**Open House Saturday, March 2nd 1PM to 3PM.**

Nestled in unincorporated Franklin County, MO, this 60± acre property is a haven for those seeking the perfect blend of natural beauty and recreational opportunities. Offered into two tracts, the land features a diverse landscape with mature hardwoods and cedar trees, providing an ideal habitat for wildlife enthusiasts and hunters alike. The focal point of the property is a rustic 3-bedroom, 2-bath log cabin, offering a cozy retreat surrounded by nature.

Strategically positioned just off state highway HH, this property provides convenient access for those looking to escape the city life or embark on a new home construction project. Located only 14 miles east of St. Clair, 20 miles south of Eureka, and a mere 33 miles from the Chesterfield Valley, the property strikes a perfect balance between seclusion and accessibility.

Whether you're drawn to the allure of hunting, exploring the wilderness, or simply seeking a tranquil escape, this property caters to a variety of outdoor pursuits. For more details or to schedule a visit, reach out to Danielle Fox at 636-487-1229 or Eric Merchant at 314-541-1218. Your ideal slice of nature awaits.

**Tract 1:** 20± gently rolling acres consisting of mature hardwoods. Nice hunting and recreation tract fronting state highway HH. Ideal location for new construction. There will be a 40' ingress/egress and utility easement across current driveway to tract 2.

**Tract 2:** 40± gently rolling acres consisting of mature hardwoods, cedar trees and 3-bedroom, 2-bath log cabin. Excellent hunting, recreation, and country living with all the amenities nearby. This tract will be accessed via a 40' ingress/egress and utility easement.



## PRESENTED BY:

**ERIC MERCHANT**  
Real Estate Consultant  
M: (314) 541-1218  
P: (855) 573-5263 x730  
E: emerchant@trophyapa.com

**DANIELLE FOX**  
Real Estate Consultant  
M: (636) 487-1229  
P: (855) 573-5263 x746  
E: dfox@trophyapa.com

**Trophy Properties and Auction**  
640 Cepi Drive, Suite 100  
Chesterfield, MO 63005

www.Trophyapa.com  
leads@trophyapa.com



**T R O P H Y**  
PROPERTIES AND AUCTION  
LAND | RECREATIONAL | RESIDENTIAL

# Franklin County Missouri Land for Sale at iAuction - Tierney Property

[www.TrophyPA.com](http://www.TrophyPA.com) • (855) 573-5263 • [leads@trophyPA.com](mailto:leads@trophyPA.com)



The information is believed to be accurate; however, no liability for its accuracy, errors or omissions is assumed. All lines are drawn on maps, photographs, etc. are approximate. Buyers should verify the information to their satisfaction. There are no expressed or implied warranties pertaining to this property. Both real estate (including all improvements, if any) is being sold As Is, Where Is with NO warranties expressed or implied. Please make all inspections and have financing arranged prior to the end of bidding.



**T R O P H Y**  
PROPERTIES AND AUCTION  
LAND | RECREATIONAL | RESIDENTIAL

# Franklin County Missouri Land for Sale at iAuction - Tierney Property

[www.TrophyPA.com](http://www.TrophyPA.com) • (855) 573-5263 • [leads@trohypa.com](mailto:leads@trohypa.com)



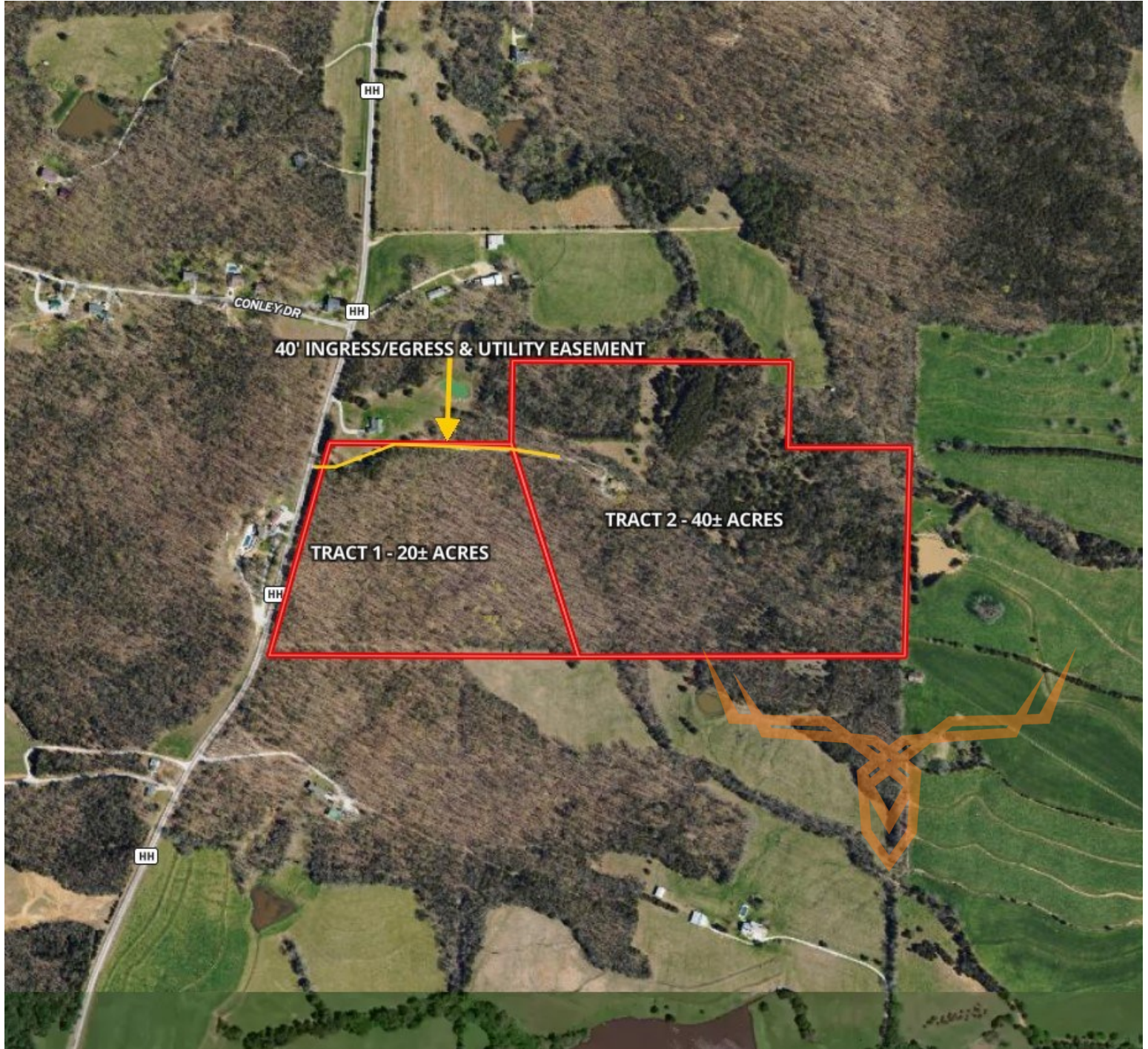
The information is believed to be accurate; however, no liability for its accuracy, errors or omissions is assumed. All lines are drawn on maps, photographs, etc. are approximate. Buyers should verify the information to their satisfaction. There are no expressed or implied warranties pertaining to this property. Both real estate (including all improvements, if any) is being sold As Is, Where Is with NO warranties expressed or implied. Please make all inspections and have financing arranged prior to the end of bidding.



**T R O P H Y**  
PROPERTIES AND AUCTION  
LAND | RECREATIONAL | RESIDENTIAL

# Franklin County Missouri Land for Sale at iAuction - Tierney Property

[www.TrophyPA.com](http://www.TrophyPA.com) • (855) 573-5263 • [leads@trophyPA.com](mailto:leads@trophyPA.com)



The information is believed to be accurate; however, no liability for its accuracy, errors or omissions is assumed. All lines are drawn on maps, photographs, etc. are approximate. Buyers should verify the information to their satisfaction. There are no expressed or implied warranties pertaining to this property. Both real estate (including all improvements, if any) is being sold As Is, Where Is with NO warranties expressed or implied. Please make all inspections and have financing arranged prior to the end of bidding.