

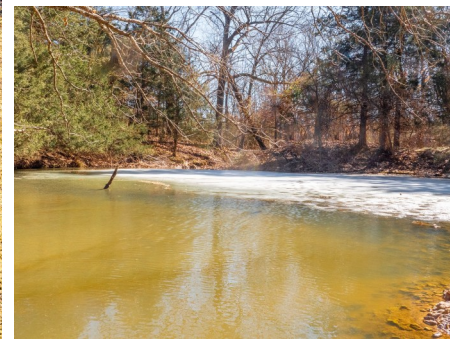


T R O P H Y
PROPERTIES AND AUCTION
LAND | RECREATIONAL | RESIDENTIAL

10.67± Acre Vacant Land for Sale - Gasconade County

www.TrophyPA.com • (855) 573-5263 • leads@trophyapa.com

PRICE REDUCED!



PROPERTY ADDRESS:

00 Hwy 19
Hermann, MO 65041

PRICE: \$126,973

ACRES: 10.67±

COUNTY: Gasconade

PROPERTY HIGHLIGHTS:

- Gently rolling pasture
- Great possible building sites
- Scattered timber
- Pond
- Hwy and/or County road access
- Close to Hermann, Rosebud, and Owensville
- Mini farm
- Additional acreage available

PROPERTY DESCRIPTION:

Take a peaceful and scenic drive to this 10.67+/- acre property, nestled in the heart of Missouri wine country just outside of Drake, MO. Conveniently located only 20 minutes south of Hermann, 11 minutes from the charming town of Rosebud, and 16 minutes from Owensville, this land offers both tranquility and accessibility.

The property features gently rolling pastures, small game pond, and some scattered timber, creating a beautiful and versatile landscape. Whether you're looking to build your dream home, start a mini farm, or make a investment for the future, this land provides endless possibilities. With direct access off of Liesmeyer Road, this prime location is ready for your vision to come to life.



PRESENTED BY:

JESSE KLINGLER

Land Specialist

M: (636) 699-5208

P: (855) 573-5263 x714

E: jklingler@trophyapa.com

Trophy Properties and Auction

640 Cepi Drive, Suite 100

Chesterfield, MO 630056

www.Trophyapa.com

leads@trophyapa.com



T R O P H Y
PROPERTIES AND AUCTION
LAND | RECREATIONAL | RESIDENTIAL

10.67± Acre Vacant Land for Sale - Gasconade County

www.TrophyPA.com • (855) 573-5263 • leads@trophyPA.com

