



Gove County Kansas Land for Sale at iAuction - Jacoway-Green-Beesley Farm

www.TrophyPA.com • (855) 573-5263 • leads@trophyapa.com



BIDDING ENDS THURSDAY, APRIL 25TH AT 10:00 AM
SEE FULL TERMS & CONDITIONS AT WWW.TROPHYPA.COM



PROPERTY ADDRESS:

00 Gove County Road B
Dighton, KS 67839

ACRES: 160
COUNTY: Gove

AUCTION DETAILS:

Here is a very nice quarter section of 100% tillable farmland in southern Gove County being sold at iAuction. The buyer will receive full surface possession at deposit of earnest money and minerals with royalty possession upon transaction closing. The property is in corn stubble now and a new owner can take quick advantage by planting their own spring crop. Public road access on the north and west sides. Soils consist of Ulysses silt loam 0 to 1 percent slopes, Carlson-Campus complex 1 to 3 percent slopes, and Penden clay loam 3 to 7 percent slopes.

There is one producing oil well on the property. Mineral rights and associated royalties owned by the seller transfer to the buyer at transaction closing. See renditions sheets for 2021 and 2022 in the downloads on our auction listing site for more information.

USDA/FSA information: 156.85 Farmland Acres, 155.78 Cropland Acres with 155.78 DCP - 33.36 wheat base acres, and a PLC yield of 58 - 48.00 corn base acres with a PLC yield of 76 - 22.92 grain sorghum base acres with a PLC yield of 77.

This property is 6 miles north of Shields or 18 miles south of Gove City. From the east edge of Shields go North on Laredo to the Gove County line at Gove A. Go west on Gove A one quarter mile to Gove 50. North on Gove 50 one half mile and the property is on the east side of the road.



PRESENTED BY:

DAN MELSON

Land Specialist - KS

M: (785) 979-3402

P: (855) 573-5263 x745

E: dmelson@trophyapa.com

Trophy Properties and Auction

640 Cepi Drive

Suite 100

Chesterfield, MO 63005

www.Trophyapa.com

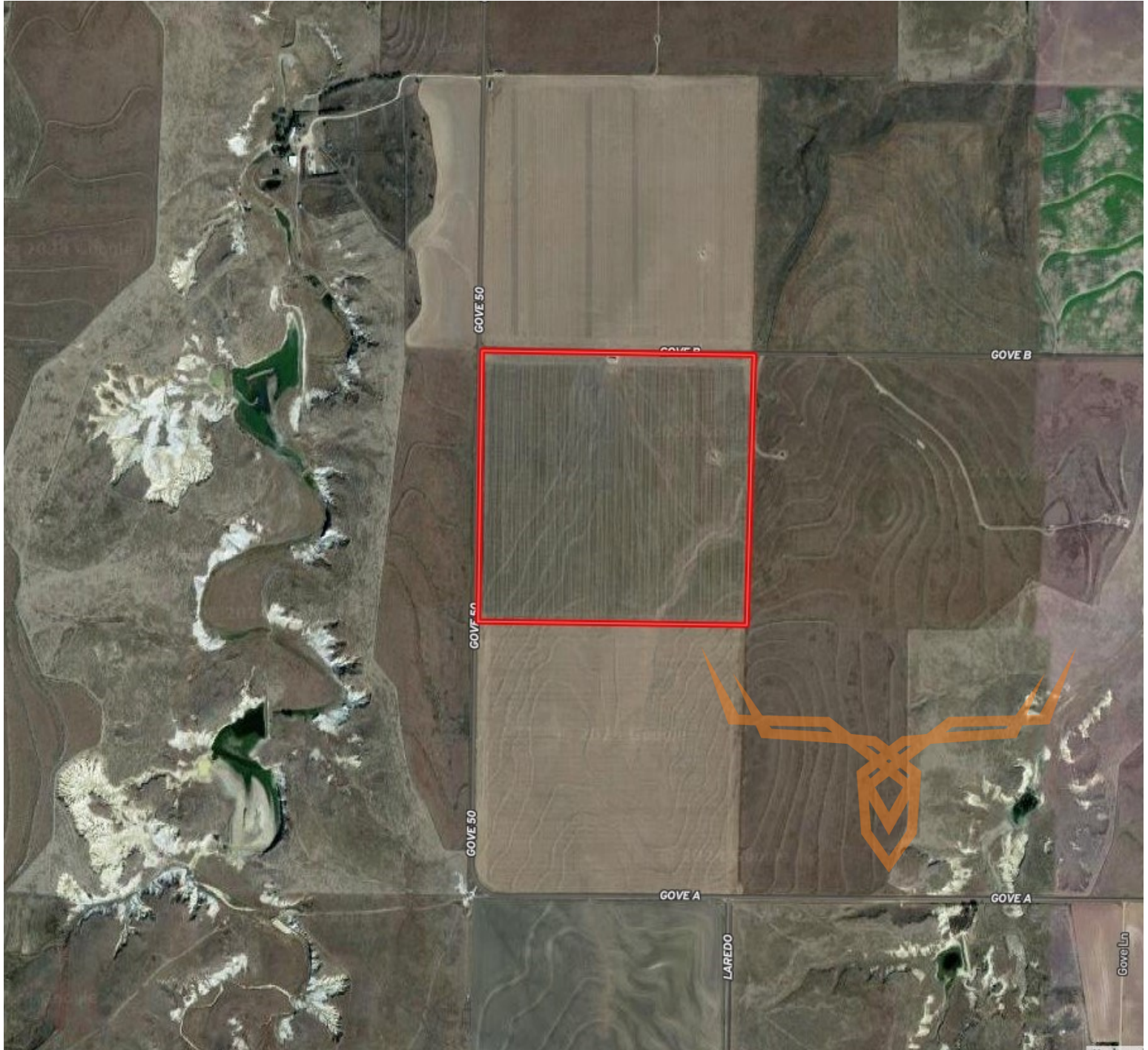
leads@trophyapa.com



T R O P H Y
PROPERTIES AND AUCTION
LAND | RECREATIONAL | RESIDENTIAL

Gove County Kansas Land for Sale at iAuction - Jacoway-Green-Beesley Farm

www.TrophyPA.com • (855) 573-5263 • leads@trophyPA.com



The information is believed to be accurate; however, no liability for its accuracy, errors or omissions is assumed. All lines are drawn on maps, photographs, etc. are approximate. Buyers should verify the information to their satisfaction. There are no expressed or implied warranties pertaining to this property. Both real estate (including all improvements, if any) is being sold As Is, Where Is with NO warranties expressed or implied. Please make all inspections and have financing arranged prior to the end of bidding.