

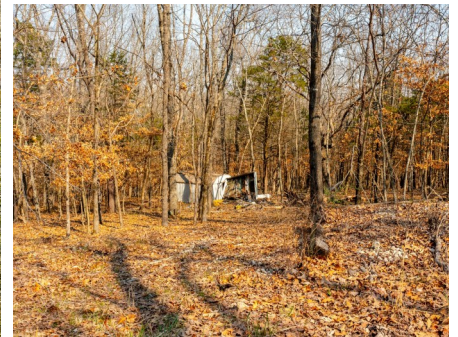


T R O P H Y
PROPERTIES AND AUCTION
LAND | RECREATIONAL | RESIDENTIAL

Vacant Building Lot with Pomme de Terre Lake Views for Sale - Hickory County

www.TrophyPA.com • (855) 573-5263 • leads@trophyapa.com

PRICE REDUCED



PROPERTY ADDRESS:

Lot 5—00 County Road 311
Phttsburg, MO 65724

PRICE: \$15,000

ACRES: .35±

COUNTY: Hickory

PROPERTY HIGHLIGHTS:

- Great build sites
- Abundant Wildlife
- Adjoins US Corps land
- Pomme De Terre views
- 8 minutes to Nemo public boat ramp
- 5 minutes to Grocery store
- 25 minutes to Bolivar Mo
- 1 hour to Springfield Mo

PROPERTY DESCRIPTION:

Situated just off the shores of Pomme de Terre Lake, this lot offers an ideal canvas for crafting your lake cabin or even perhaps your dream home. Adjacent to Corp property, it teems with diverse wildlife. Just a brief 5-minute drive to the Nemo public boat ramp. The gently sloping terrain makes for an ideal build site. Only 1.5 miles of gravel road just off of State Highway 64. A mere 25-minute drive to Bolivar, Missouri.

Pomme de Terre Lake is renowned for its exceptional fishing. Offering good stringers of crappie, bass, walleye, and the elusive Muskie. Spanning 113 miles of shoreline and over 7800 acres of pristine surface water, the lake offers boundless opportunities for outdoor enthusiasts to hike, boat, fish, and enjoy the ever-desirable lake life experience.



PRESENTED BY:

WAYLON MARTIN

Land Specialist

M: (417) 410-5964

P: (855) 573-5263 x712

E: wmartin@trophyapa.com

Trophy Properties and Auction

640 Cepi Drive

Suite 100

Chesterfield, MO 63005

www.Trophyapa.com

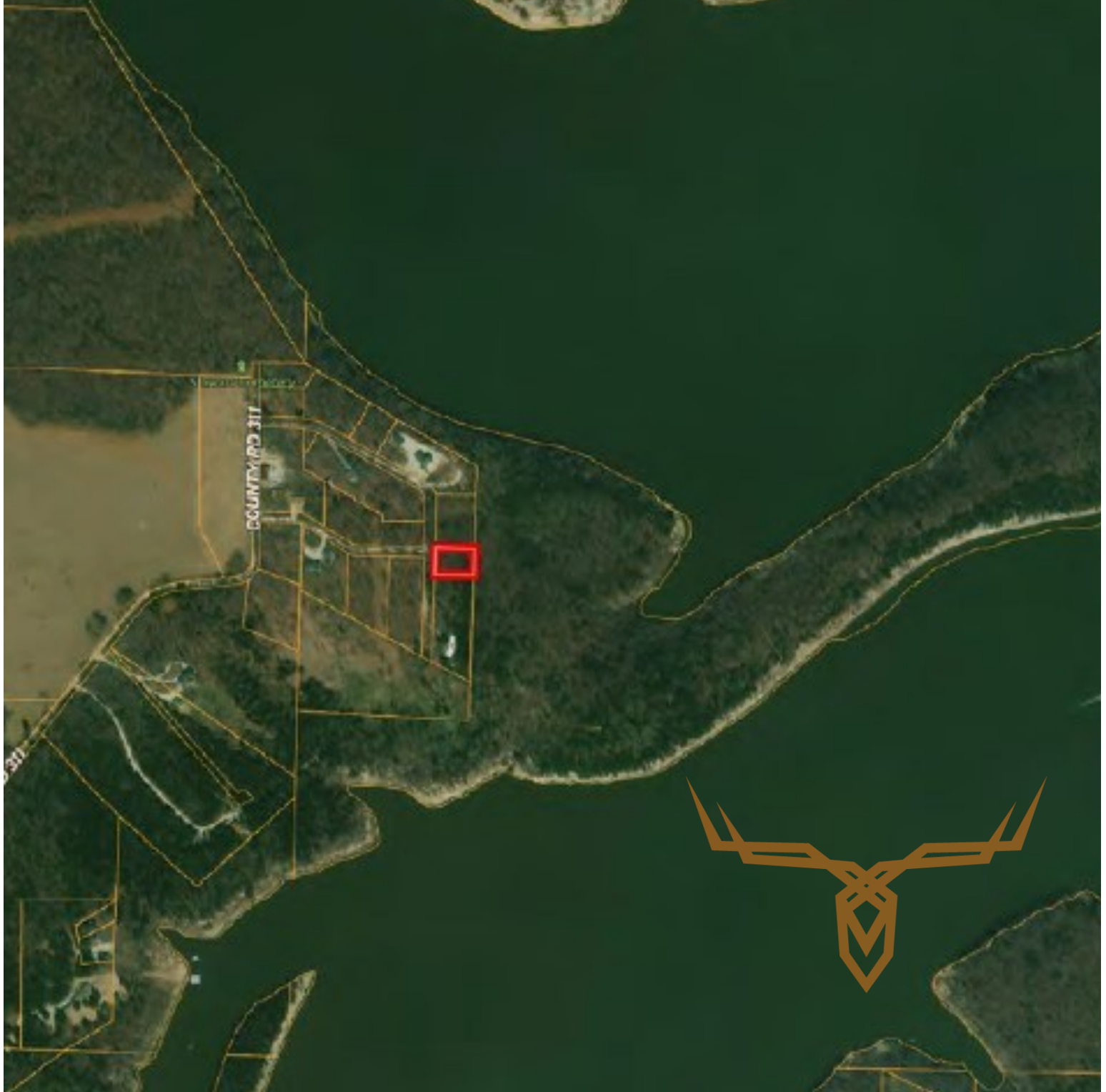
leads@trophyapa.com



T R O P H Y
PROPERTIES AND AUCTION
LAND | RECREATIONAL | RESIDENTIAL

Vacant Building Lot with Pomme de Terre Lake Views for Sale - Hickory County

www.TrophyPA.com • (855) 573-5263 • leads@trophyPA.com



Broker does not guarantee the accuracy of sq. ft., lot size, or other information, buyer is advised to independently verify the accuracy of information through personal