



T R O P H Y
PROPERTIES AND AUCTION
LAND | RECREATIONAL | RESIDENTIAL

140± Acre Illinois Hunting Property with Income Potential for Sale - Jackson County

www.TrophyPA.com • (855) 573-5263 • leads@trophyapa.com

PRICE IMPROVED



PROPERTY ADDRESS:

9330 Old Hwy 13
Murphysboro, IL 62966

PRICE: \$499,000

ACRES: 140±

COUNTY: Jackson

PROPERTY HIGHLIGHTS:

- 2-360 Blinds w/ stands will convey
- 3 established food plots
- Trail system
- Possible home/cabin site
- Electric/water at road
- Close to Lake Kincade, Cypress Lake & Crab Orchard Lake
- Additional acreage available

PROPERTY DESCRIPTION:

These 140± acres in Jackson County Illinois are located across the road. I bought my farm in this area because of the genetics and am aware of 5-6 bucks from 170-210" harvested in the last few years (the 210" buck by one of my clients). This area is full of big deer. There are 3-4 acres that are part of the 150 that is right down the road from the main farm. It has water and electricity on the property line close to a possible cabin or home site up on a nice hill and offers some great hunting on it as well. The main property has a great trail system around the entire perimeter for great access around the entire farm and to all three food plots. There are two 360 blinds with metal towers that will convey with the sale and allow hunting in any wind direction. This is a great farm at a price at \$3,500/acre.



PRESENTED BY:

SHANE YEARIAN

Land Specialist

M: (618) 830-2825

P: (855) 573-5263 x710

E: syearian@trophyapa.com

Trophy Properties and Auction

640 Cepi Drive, Suite 100

Chesterfield, MO 630056

www.Trophyapa.com

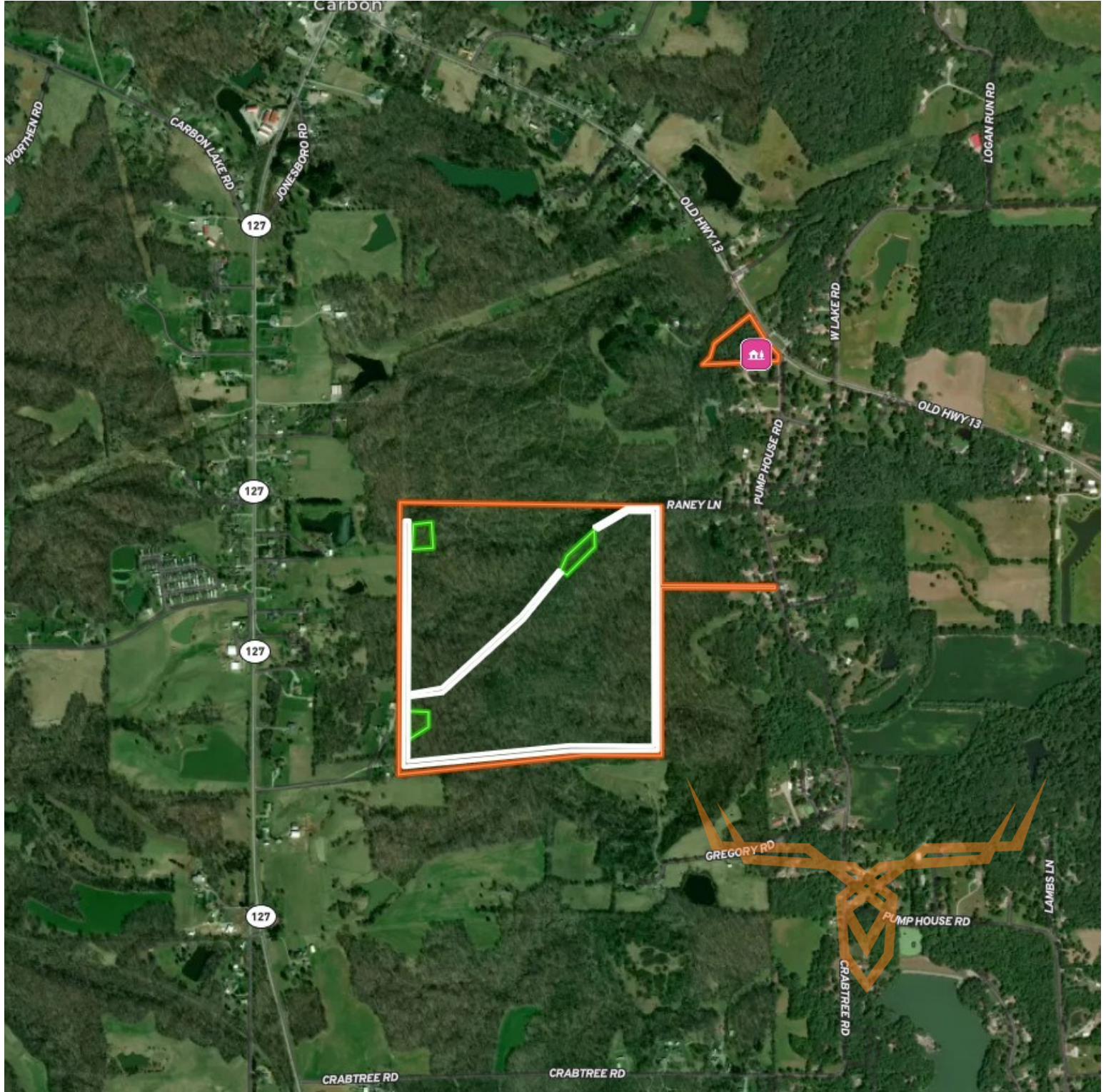
leads@trophyapa.com



T R O P H Y
PROPERTIES AND AUCTION
LAND | RECREATIONAL | RESIDENTIAL

140± Acre Illinois Hunting Property with Income Potential for Sale - Jackson County

www.TrophyPA.com • (855) 573-5263 • leads@trophyapa.com



Broker does not guarantee the accuracy of sq. ft., lot size, or other information, buyer is advised to independently verify the accuracy of information through personal