



Jefferson County Missouri Land iAuction - Schweiss Farm

T R O P H Y
PROPERTIES AND AUCTION
LAND | RECREATIONAL | RESIDENTIAL

www.TrophyPA.com • (855) 573-5263 • leads@trophy.com



BIDDING ENDS WEDNESDAY, OCTOBER 5TH AT 10:00 AM
SEE FULL TERMS & CONDITIONS AT WWW.TROPHYPA.COM

PROPERTY ADDRESS:

00 Whitewater Drive
Dittmer, MO 63023

ACRES: 72

COUNTY: Jefferson

PROPERTY DESCRIPTION:

Open House Saturday, September 24th 9AM to Noon.

Welcome to Big River country with this exclusive, extremely rare 72± acres wrapped by the Big River offering you endless outdoor opportunities! Sit yourself down by the river on your own private rock bar offering great swimming, fishing and floating access. Or hang a deer stand in one of many open food plot areas and wait for your trophy buck to walk out. While this property is only 75 acres, you'll feel like you're on a much bigger place with miles of off-road trails and access to all areas of the property. This property also boasts a diverse habitat for wildlife. There are acres of cool bottomlands and fertile soil along the river to make for great food plots. Up on the ridge, you're embraced with a great balance of hardwood timber, cedar and pine trees that make for some awesome hiking and hunting. Deer and turkey are abundant here with fresh tracks nearly everywhere you look as well as squirrels, raccoons, and other critters to entertain you. Multiple 1 room cabins are set atop the ridge as well offering you a place to camp out, hang with friends and family and simply relax. Beautiful scenic views of the Big River and surrounding hills are just outside the cabins for your enjoyment as well.

This property is without a doubt a rare gem and full of potential. Whether you want to build a dream home or need a good hunting spot not far from home, this property will serve you well. Just off Hwy Y in Jefferson County, the property is only 48 miles from St. Louis and 13 miles from Cedar Hill. All in all, it's a fantastic river country escape that will meet and exceed your needs and give you a place to build memories on forever. Don't miss your chance to own this incredible place!



PRESENTED BY:

DAVID CONWAY

Land & Home Specialist

M: (314) 910-9634

P: (855) 573-5263 x747

E: dconway@trophy.com

JON HARTING

Land & Home Specialist

M: (314) 610-6650

P: (855) 573-5263 x751

E: jharting@trophy.com

Trophy Properties and Auction

15480 Clayton Road

Suite 101

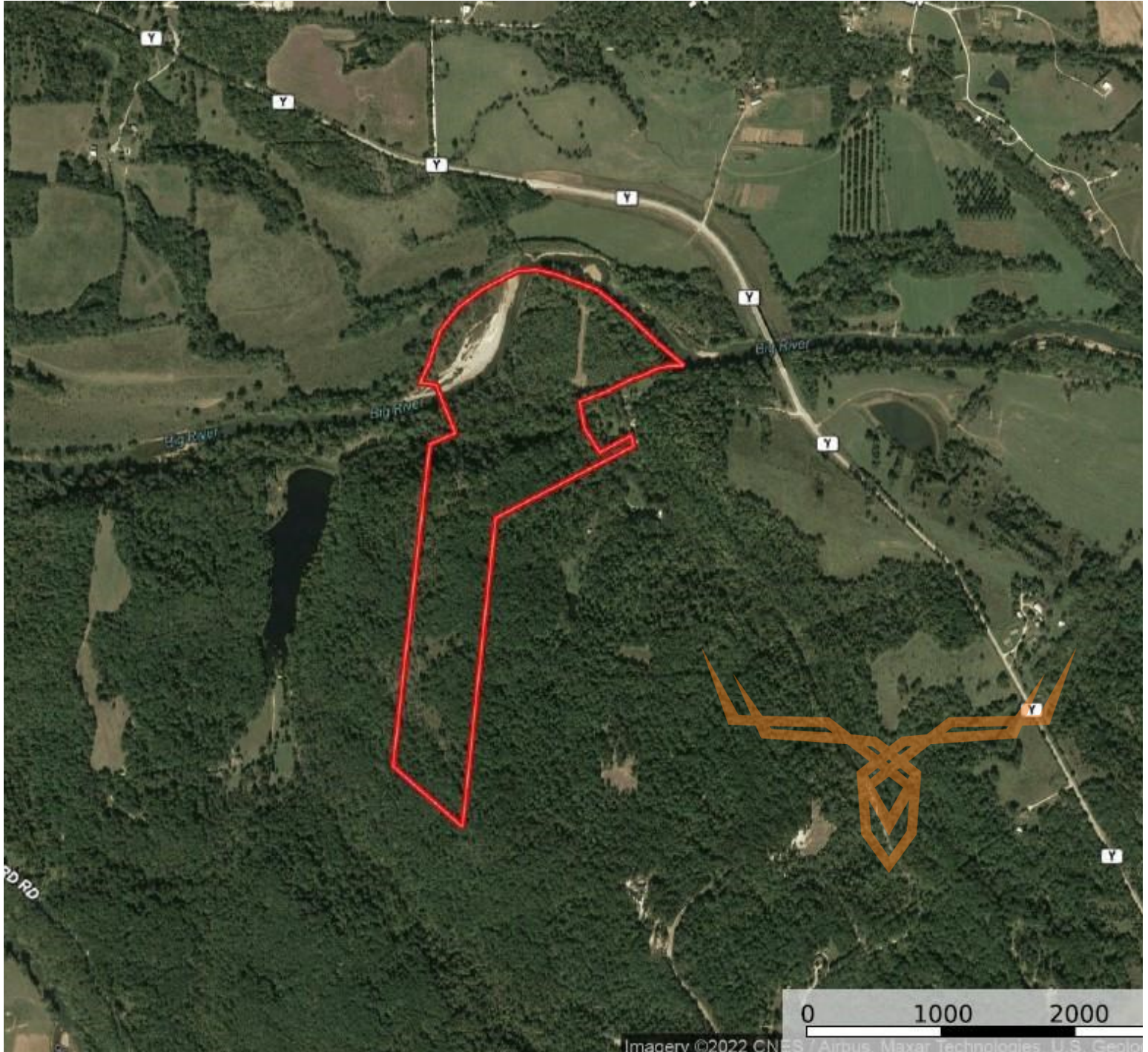
Ballwin, MO 63011



Jefferson County Missouri Land iAuction - Schweiss Farm

T R O P H Y
PROPERTIES AND AUCTION
LAND | RECREATIONAL | RESIDENTIAL

www.TrophyPA.com • (855) 573-5263 • leads@trophyPA.com



The information is believed to be accurate; however, no liability for its accuracy, errors or omissions is assumed. All lines are drawn on maps, photographs, etc. are approximate. Buyers should verify the information to their satisfaction. There are no expressed or implied warranties pertaining to this property. Both real estate (including all improvements, if any) is being sold As Is, Where Is with NO warranties expressed or implied. Please make all inspections and have financing arranged prior to the end of bidding.