



T R O P H Y
 PROPERTIES AND AUCTION
 LAND | RECREATIONAL | RESIDENTIAL

3,300 SF Newly Built Home on 18± Acres for Sale—Jefferson County

www.TrophyPA.com • (855) 573-5263 • leads@trophy.com

NEW PRICE!



PROPERTY ADDRESS:
 7344 Rovin Acres
 House Springs, MO 63051

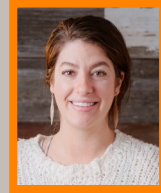
PRICE: \$899,000
ACRES: 18±
COUNTY: Jefferson

PROPERTY HIGHLIGHTS:

- 18± Unrestricted Acres
- 3,300 SF New Build Home
- 3 Bedrooms, 2 Full, & 1 1/2 Bath
- Open Floor Plan
- 3 Car Garage
- 9' Pour Walk-Out Lower Level
- Additional RV Parking Pad w/ Hook up

PROPERTY DESCRIPTION:

Welcome home to your 3,300 sq ft completely newly built escape on 18± acres! The open floor plan includes a great room with fireplace, dining room, and additional sitting room off the kitchen that could be a separate breakfast space. There are 3 spacious bedrooms, 2 full baths, and a ½ bath. The primary suite has a huge bathroom with double vanity, make-up vanity, and massive shower. The main floor laundry is conveniently located off the primary bath. The other two large bedrooms have a private Jack & Jill bath. Set up in the additional office or use as a guest rm. Get ready to entertain in the beautiful kitchen with 42' cabinets, granite counters, S/S appliances. Everyone will love hanging out on the huge covered patio or finish the 9' pour walkout lower level for extra space. The extras continue: 3 car garage, extra parking, rv parking with water/ sewer/electric! Don't forget the 18 acres perfect for hunting, trail riding, or just enjoy seclusion. You really need to see this place!



PRESENTED BY:

SARA BOLLMANN
 Home & Land Specialist

M: (636) 369-2224
 P: (855) 573-5263 x752
 E: sbollmann@trophy.com

PAUL DILLER
 Land & Home Specialist

M: (636) 262-6352
 P: (855) 573-5263 x742
 E: pdiller@trophy.com

Trophy Properties and Auction
 640 Cepi Drive, Suite 100
 Chesterfield, MO 63005

www.Trophy.com



3,300 SF Newly Built Home on 18± Acres for Sale—Jefferson County

TROPHY
PROPERTIES AND AUCTION
LAND | RECREATIONAL | RESIDENTIAL

www.TrophyPA.com • (855) 573-5263 • leads@trophy.com



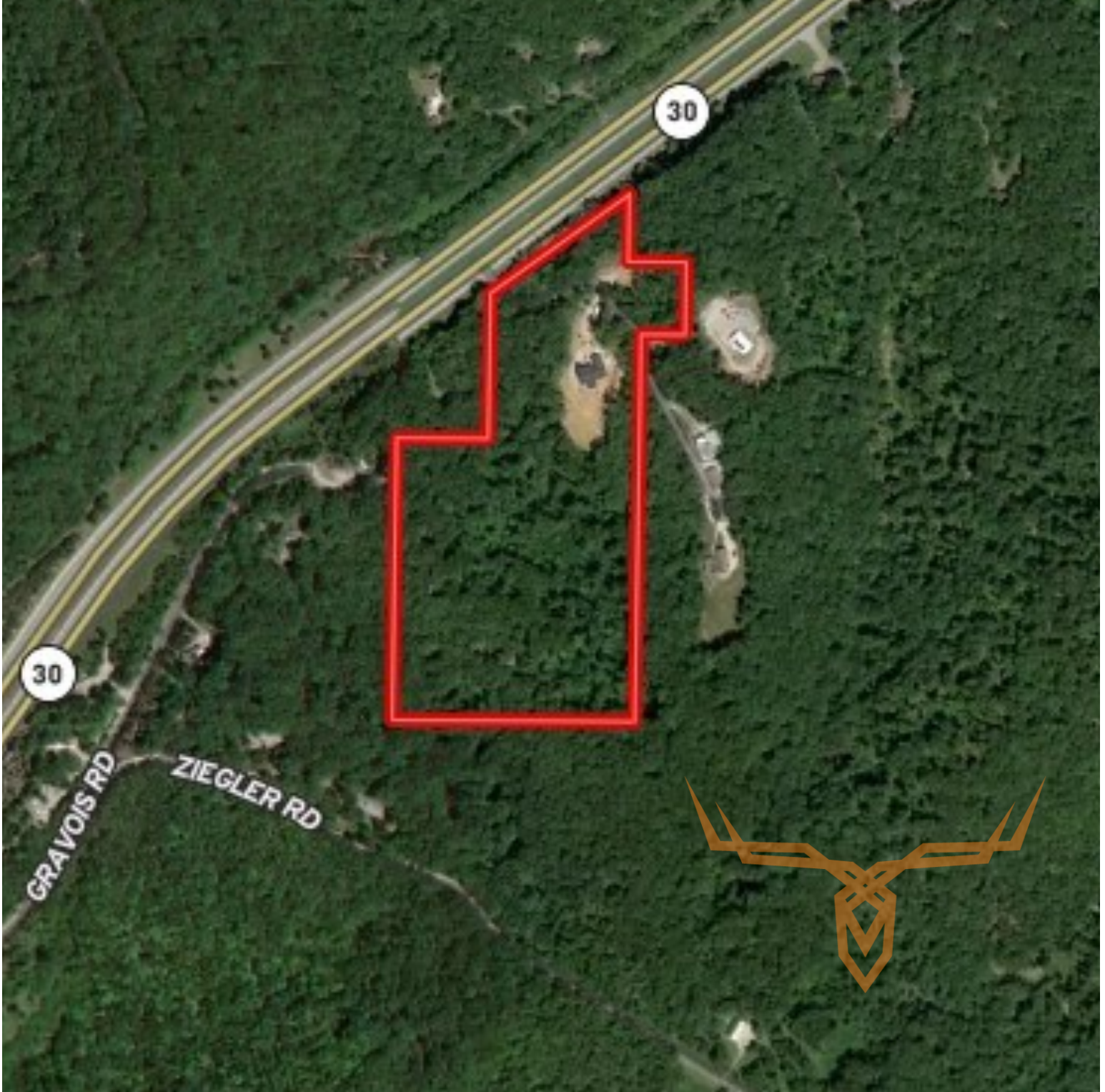
Broker does not guarantee the accuracy of sq. ft., lot size, or other information, buyer is advised to independently verify the accuracy of information through personal inspection and with appropriate professionals



3,300 SF Newly Built Home on 18± Acres for Sale—Jefferson County

T R O P H Y
PROPERTIES AND AUCTION
LAND | RECREATIONAL | RESIDENTIAL

www.TrophyPA.com • (855) 573-5263 • leads@trophy.com



Broker does not guarantee the accuracy of sq. ft., lot size, or other information, buyer is advised to independently verify the accuracy of information through personal inspection and with appropriate professionals