



**T R O P H Y**  
PROPERTIES AND AUCTION  
LAND | RECREATIONAL | RESIDENTIAL

# An Outdoor Enthusiast's Dream With 263.52 Acres of Prime Property—Laclede County

www.TrophyPA.com • (855) 573-5263 • leads@trophyapa.com



## PROPERTY ADDRESS:

00 Medley Lane  
Eldridge, MO 65463

**PRICE:** \$765,000

**ACRES:** 263.52

**COUNTY:** Laclede

## PROPERTY HIGHLIGHTS:

- Established Build Site
- 48' x 30' Outbuilding
- Well w/new Pump
- Electricity
- Lagoon
- RallyNet Fiber Internet Access
- Fresh Survey & Extensive Trail System
- Live Creek, Wet Weather Creeks & Springs
- Abundant Wildlife & Great Hunting
- Approx. 30 mins from Camdenton, Lebanon & Bennett Springs

**PROPERTY DESCRIPTION:** Welcome to your ideal recreational retreat—a stunning 263.52-acre property in Laclede County, MO. This land offers a perfect blend of ready-to-build, utility-equipped spaces and prime timberland for hunting, making it an exceptional for those seeking an investment in the heart of the Ozarks. Situated off a private road, it is ideal for a serene homestead, a hunting camp, or a weekend escape. Utilities, including electricity, a private well, and a lagoon, are already in place, on the property. Multiple build sites are available for cabins, homes, or outbuildings, complemented by a large existing outbuilding. The land features diverse hardwood timber, including white oak, black oak, hickory, and walnut, providing an excellent habitat. A year-round creek flows through the northern half, while a wet-weather creek and natural spring can be found in the southern portion. Clearings and powerline cuts offer ideal spots for food plots, joined by a network of well-maintained trails for easy access throughout the rolling terrain. This area is renowned for its deer and turkey hunting, with a history of large mature bucks. This property is conveniently located near Lake of the Ozarks, Bennett Springs, the Niangua River, and vast Missouri conservation land. If you're looking for a unique blend of seclusion, natural beauty, and outdoor adventure, check out this rare 263.52-acre property.



## PRESENTED BY:

**JUSTIN SWAST**

**Land Specialist**

M: (314) 805-0202

P: (855) 573-5263 x775

E: jswast@trophyapa.com

**Trophy Properties and Auction**

640 Cepi Drive, Suite 100

Chesterfield, MO 630056

www.Trophyapa.com

leads@trophyapa.com





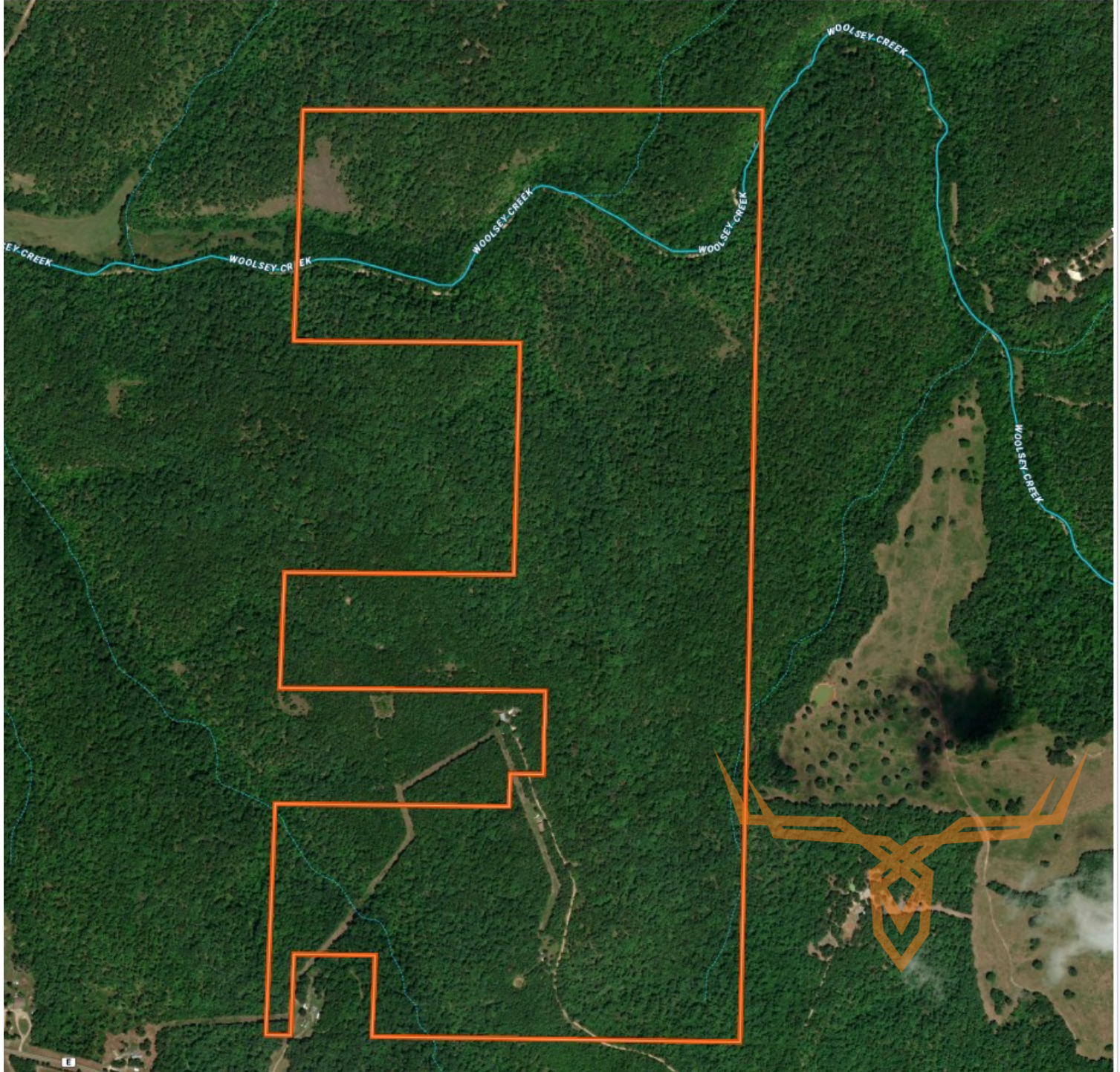
**T R O P H Y**  
PROPERTIES AND AUCTION  
LAND | RECREATIONAL | RESIDENTIAL

# An Outdoor Enthusiast's Dream With 263.52 Acres of Prime Property—Laclede County

[www.TrophyPA.com](http://www.TrophyPA.com) • (855) 573-5263 • [leads@trophyPA.com](mailto:leads@trophyPA.com)

## Laclede 263.52 Surveyed

Laclede County, Missouri, 263.52 AC +/-



Broker does not guarantee the accuracy of sq. ft., lot size, or other information, buyer is advised to independently verify the accuracy of information through personal inspection and with appropriate professionals