



T R O P H Y
PROPERTIES AND AUCTION
LAND | RECREATIONAL | RESIDENTIAL

Prime 97 Acre Hunting & Recreational Paradise for Sale - Lewis County

www.TrophyPA.com • (855) 573-5263 • leads@trophyapa.com



PROPERTY ADDRESS:

00 225TH Street
LaBelle, MO 63447

PRICE: \$550,000

ACRES: 97

COUNTY: Lewis

PROPERTY HIGHLIGHTS:

- 97 acres
- 3 miles southwest of Labelle, MO
- 12 X 20 shed for storage and sleeping quarters with electricity
- Established trails for great access
- 10 acres of switch grass
- 18 acres of food plots

PROPERTY DESCRIPTION:

Located just 3 miles southwest of La Belle, Missouri, this exceptional 97-acre property is a dream for outdoor enthusiasts and wildlife managers alike. With 29 acres of open ground and the remainder in timber, this property offers the perfect balance of habitat diversity for trophy deer and an abundant turkey population. The open acreage is strategically designed to support wildlife, featuring 10 acres of switchgrass for cover, 2 acres of fall food plots, and the rest in standing grain to provide an excellent year-round food source. The land has been intensely managed to sustain mature whitetail deer, making it an ideal hunting property. A 12x20 shed, equipped with electricity, serves as a convenient storage space or a cozy bunkhouse for overnight stays. With great road access from the northeast side, you can reach your hunting stands without spooking all the deer with the prevailing west winds. Whether you're looking for a premier hunting property, a weekend getaway, or a secluded retreat with investment potential, this Lewis County gem checks all the boxes. Don't miss your chance to own this well-maintained, wildlife-rich haven!



PRESENTED BY:

JASON CLEVELAND

Broker/Partner

M: (636) 751-4579

P: (855) 573-5263 x701

E: jcleveland@trophyapa.com

Trophy Properties and Auction

640 Cepi Drive, Suite 100

Chesterfield, MO 630056

www.Trophyapa.com

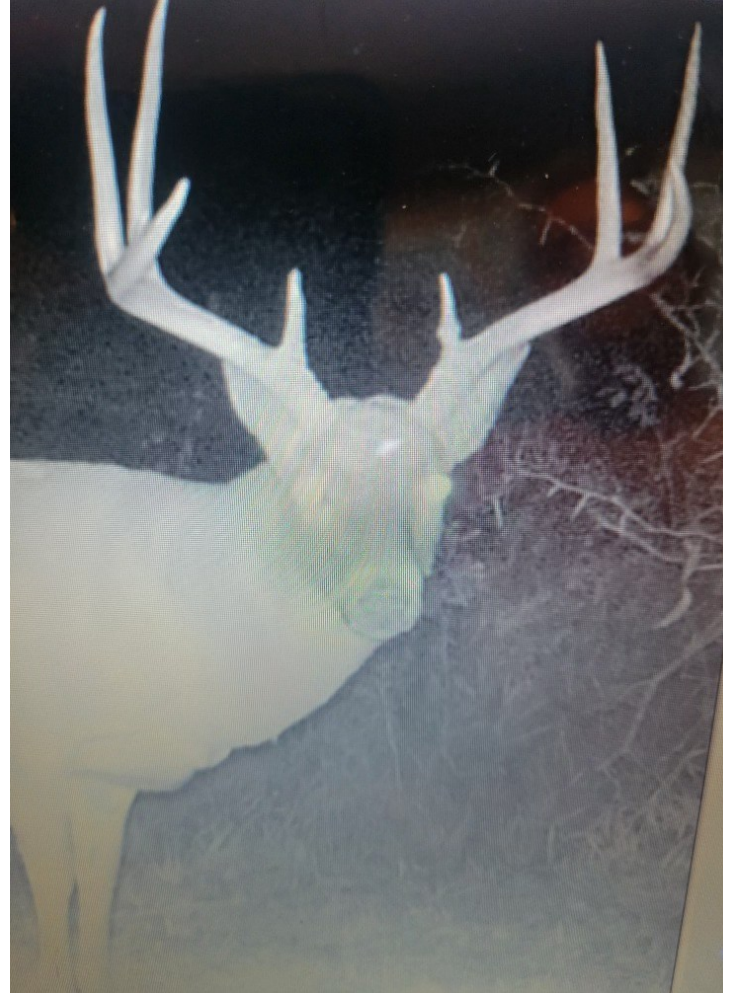
leads@trophyapa.com



T R O P H Y
PROPERTIES AND AUCTION
LAND | RECREATIONAL | RESIDENTIAL

Prime 97 Acre Hunting & Recreational Paradise for Sale - Lewis County

www.TrophyPA.com • (855) 573-5263 • leads@trohypa.com



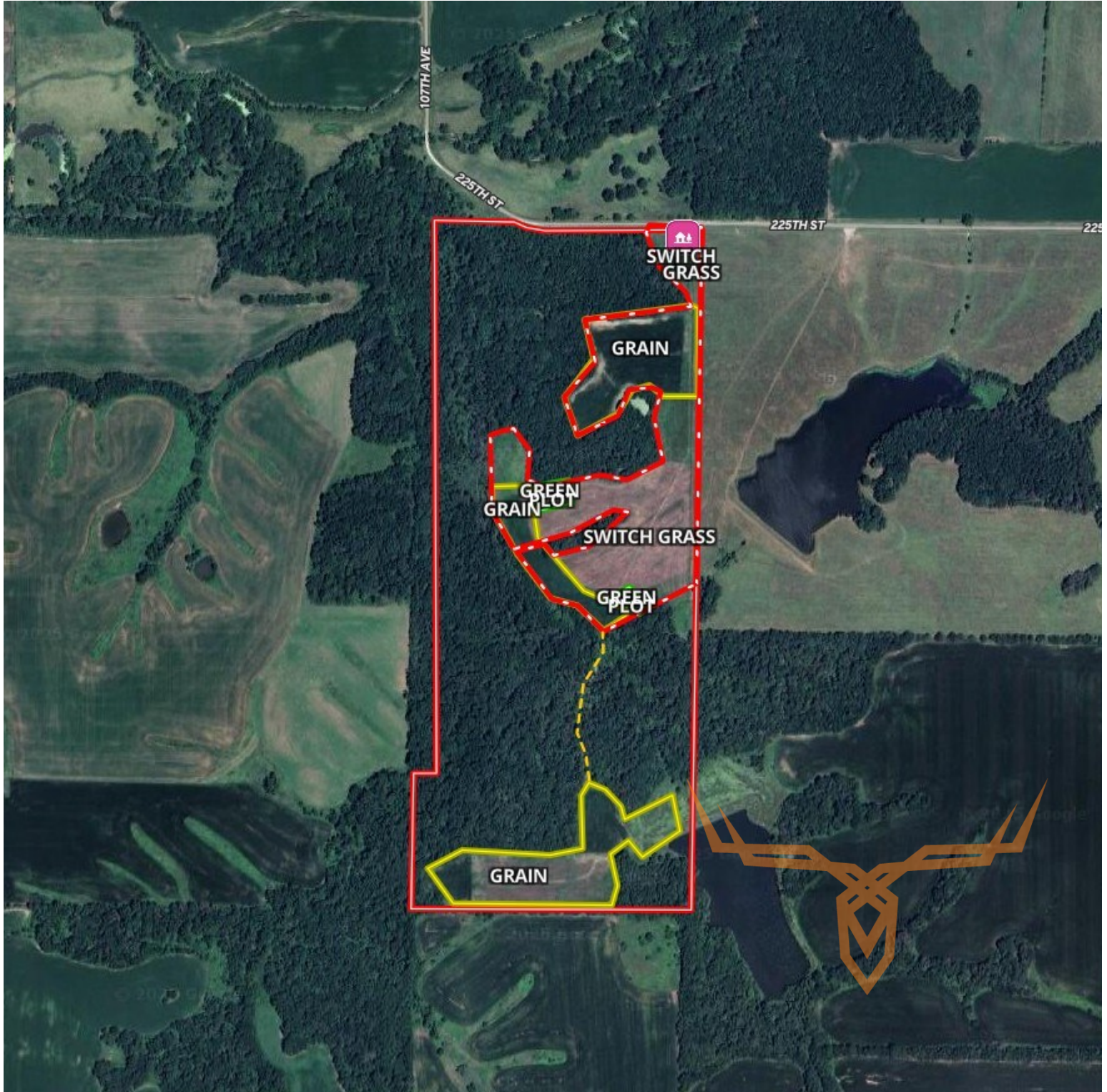
Broker does not guarantee the accuracy of sq. ft., lot size, or other information, buyer is advised to independently verify the accuracy of information through personal inspection and with appropriate professionals



T R O P H Y
PROPERTIES AND AUCTION
LAND | RECREATIONAL | RESIDENTIAL

Prime 97 Acre Hunting & Recreational Paradise for Sale - Lewis County

www.TrophyPA.com • (855) 573-5263 • leads@trophy.com



Broker does not guarantee the accuracy of sq. ft., lot size, or other information, buyer is advised to independently verify the accuracy of information through personal inspection and with appropriate professionals