

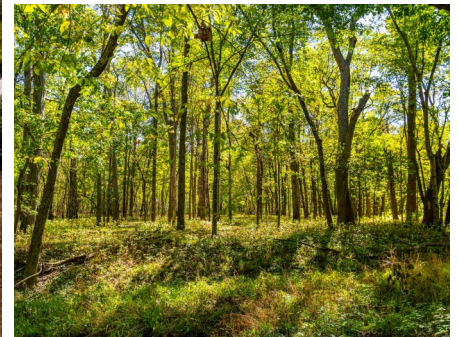


T R O P H Y
PROPERTIES AND AUCTION
LAND | RECREATIONAL | RESIDENTIAL

28.5± Acre Hunting & Homesite Tract for Sale - Lincoln County

www.TrophyPA.com • (855) 573-5263 • leads@trophyapa.com

PRICE IMPROVED



PROPERTY ADDRESS:

00 Ratermann Rd.
Silex, MO 63377

PRICE: \$230,000

ACRES: 28.5

COUNTY: Lincoln

PROPERTY HIGHLIGHTS:

- Weekend Retreat
- Silex Schools
- Recreational
- Homesite
- Excellent Hunting
- Large Timber

PROPERTY DESCRIPTION:

28.5± acres that has it all! This mostly wooded tract offers EXCELLENT HUNTING and a HOMESITE on the 2 open acres. Electric is nearby. A creek meanders through the property providing water and cover for mature bucks and turkey. This tract is a travel way for wildlife from the neighboring agriculture fields. Numerous large bucks have been harvested on the property by previous owners. Several openings offer places for small food plots. Looking for income? It is full of marketable timber. Don't wait, this is the type of tract everyone is looking for! Build a home, hunting property, or weekend retreat, you decide! No mobile, modular, or manufactured homes. No commercial feedlots, junkyards, land fill, or exterior dog kennels.



PRESENTED BY:

The Evans Team

RICHARD EVANS

Land & Home Specialist

M: (636) 578-3159

E: revans@trophyapa.com

BOBBY EVANS

Land & Home Specialist

M: (636) 237-1816

E: bevans@trophyapa.com

ALICIA EVANS

Land & Home Specialist

M: (636) 290-8091

E: aevans@trophyapa.com

Trophy Properties and Auction

15480 Clayton Road

Suite 101

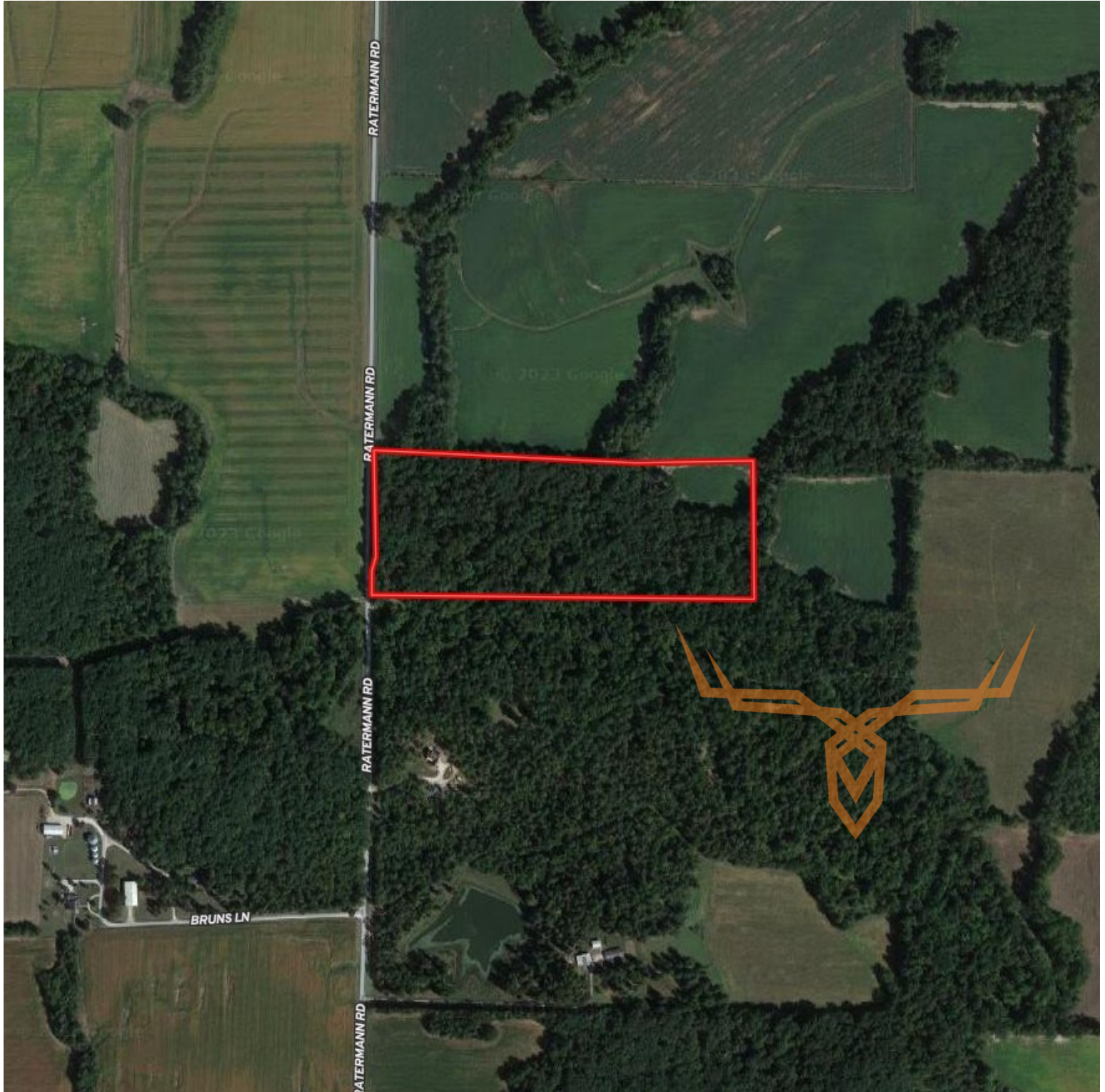
Ballwin, MO 63011



T R O P H Y
PROPERTIES AND AUCTION
LAND | RECREATIONAL | RESIDENTIAL

28.5± Acre Hunting & Homesite Tract for Sale - Lincoln County

www.TrophyPA.com • (855) 573-5263 • leads@trophy.com



Broker does not guarantee the accuracy of sq. ft., lot size, or other information, buyer is advised to independently verify the accuracy of information through personal inspection and with appropriate professionals