

# Recreational or Residential Land for Sale in Washington County Missouri

www.TrophyPA.com • 855.573.5263 • leads@trophyapa.com



## PROPERTY ADDRESS:

17014 State Hwy A.  
 Richwoods, MO 63080

**PRICE: \$44,900**

**ACRES: 27.15**

**COUNTY: Washington**

## PROPERTY DESCRIPTION:

If you are looking for the ideal property to build your dream home or have for recreational/hunting purposes, then this 27.15 surveyed acre tract is right for you! Located just over 1 hour from the St. Louis in unincorporated Washington County, there is black-top highway to the property line with over .25 miles of frontage on State Highway A.

Loaded with mature timber and a wet weather creek at the back of the property, plenty of deer & turkey sign are present on the ground. Electric is close to the property just across State Hwy. A if you are looking to build or there is great terrain to ride ATVs and play.

## PROPERTY HIGHLIGHTS:

- 27.15 surveyed acres
- Mature marketable timber
- .25 miles of State Hwy A frontage
- Near Richwoods, MO
- 1 hour from St. Louis
- Small creek
- Blacktop to property line
- Electric available across Hwy A
- Possible home-site
- Hunting opportunities



**PRESENTED BY:**

**KEN DAYLEY**

**Land Specialist - MO**

M: 314.409.4568

P: 855.573.5263 x704

kdayley@trophyapa.com

Trophy Properties and Auction

15480 Clayton Road

Suite 101

Ballwin, MO 63011

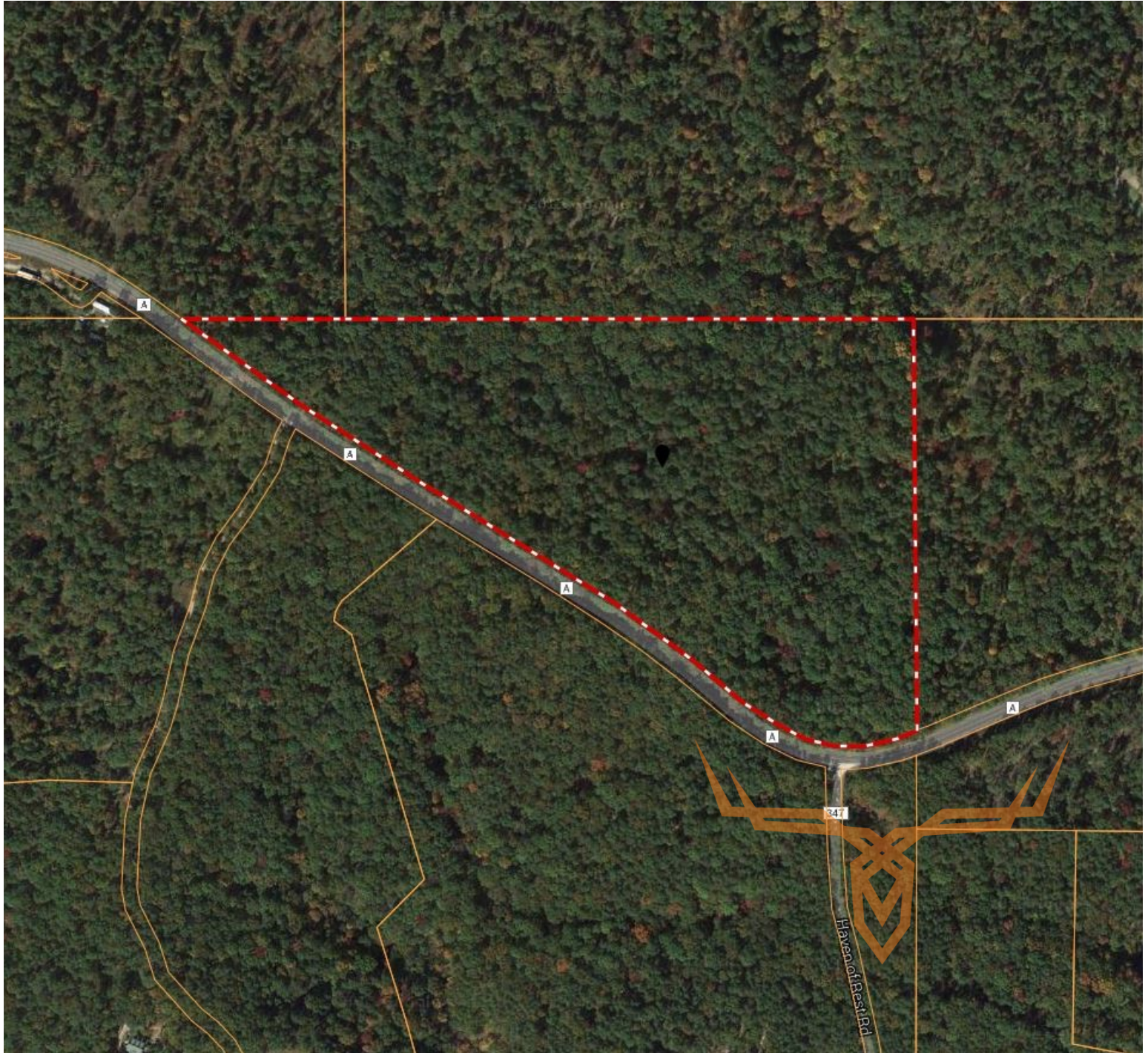
www.Trophyapa.com

leads@trophyapa.com



# Recreational or Residential Land for Sale in Washington County Missouri

[www.TrophyPA.com](http://www.TrophyPA.com) • 855.573.5263 • [leads@trohypa.com](mailto:leads@trohypa.com)



**TAXES: \$23**

**TAX YEAR: 2015**