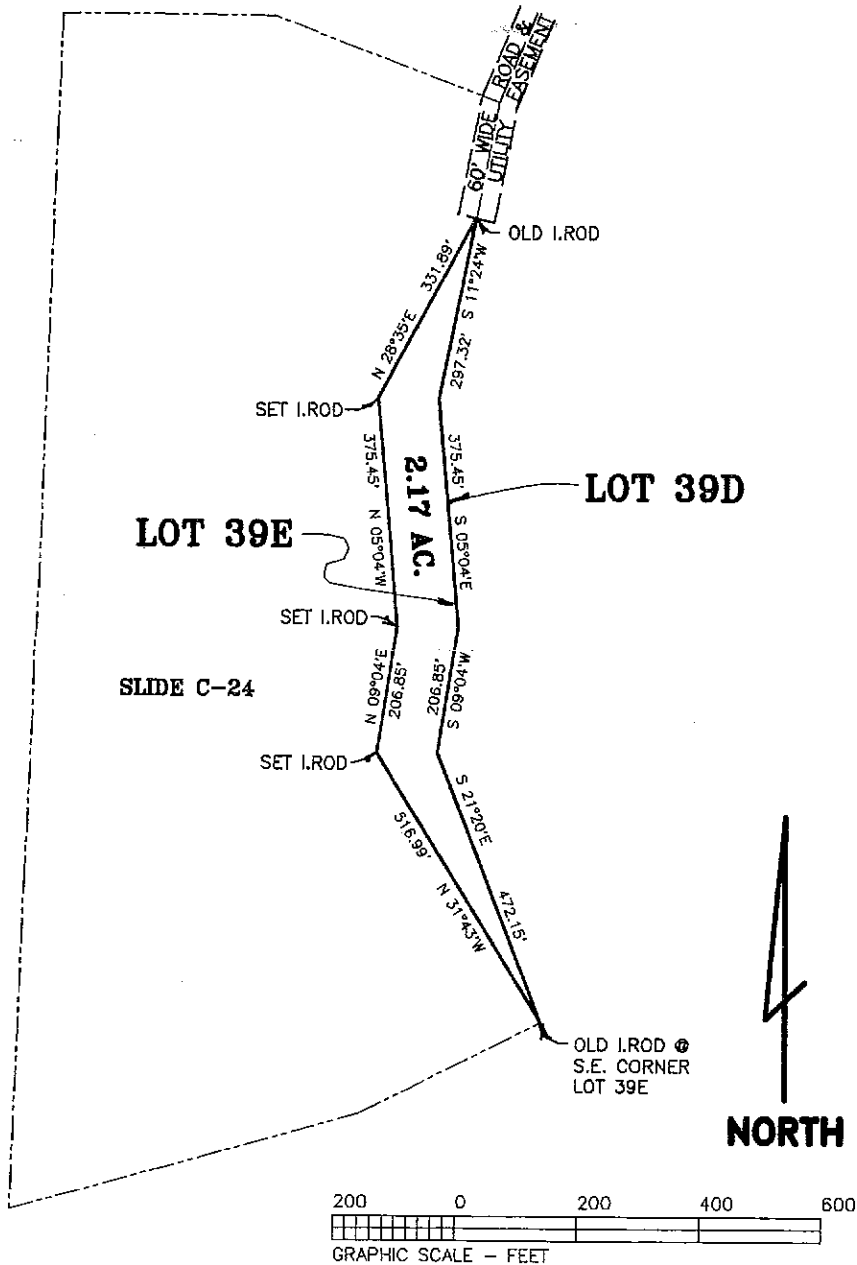


# RESUBDIVISION OF LOT 39 GARLAND WOODS - PLAT TWO SECTION 30 & 31, TOWNSHIP 47 NORTH RANGE 3 WEST, WARREN COUNTY, MO



THIS IS TO CERTIFY THAT AT THE REQUEST OF  
JOHN RONCHETTO, WE HAVE MADE A  
SURVEY AS SHOWN ABOVE AND THAT IT REPRESENTS A  
TRUE AND ACCURATE RECORD OF SAID SURVEY AND  
WAS EXECUTED IN ACCORDANCE WITH THE CURRENT  
MINIMUM STANDARDS FOR PROPERTY BOUNDARY SURVEYS  
OF THE MISSOURI STATE LAND SURVEY.  
ROBERT L. LEWIS  
PROFESSIONAL LAND SURVEYOR NO. 1004  
WARREN COUNTY SURVEYOR

CLASS OF SURVEY: RURAL			
<b>Lewis-Bade Inc.</b> Professional Land Surveyors and Professional Engineers PHONE (636) 456-2615 101 EAST WALTON WARRENTON, MO. 63383			
SURVEYED BY	DATE	REVISIONS	
JIM - TOM	5 - 2005		
DRAWN BY:	CHECKED BY:	SCALE	
RANDY	LARRY	1" = 200'	20007-4