

# Private Timber Ground Acreage for Sale in Jefferson County Missouri

Trophy Properties and Auction • 855.573.5263 • leads@trophypa.com



**T R O P H Y**  
PROPERTIES AND AUCTION  
LAND | RECREATIONAL | RESIDENTIAL



**PROPERTY ADDRESS:**  
S7/T42N/R4E  
House Springs, MO 63051

**PRICE:** \$260,000  
**ACRES:** 129  
**COUNTY:** Jefferson

## PROPERTY DESCRIPTION:

129 +/- acres of all timber ground for sale located just 30 minutes from St. Louis. A very private setting with some of the best views in Jefferson County. This property would be a great spot for a residence or for recreational use. There are multiple possible home sites with views. Lots of terrain and trails for riding ATV's or motorcycles and there are deer and turkey sign all over. This property is a real must see!

## PROPERTY HIGHLIGHTS:

- 129 +/- acres
- All timber ground
- Very private location
- One of the highest spots in Jefferson County
- Great views
- Trails throughout for ATVs, motorcycles or hiking
- Deer & turkey hunting opportunities
- 30 minutes from St. Louis
- Easement access



## PRESENTED BY:

### KEN DAYLEY

#### Land Specialist

M: 314.409.4568

P: 855.573.5263 x704

kdayley@trophypa.com

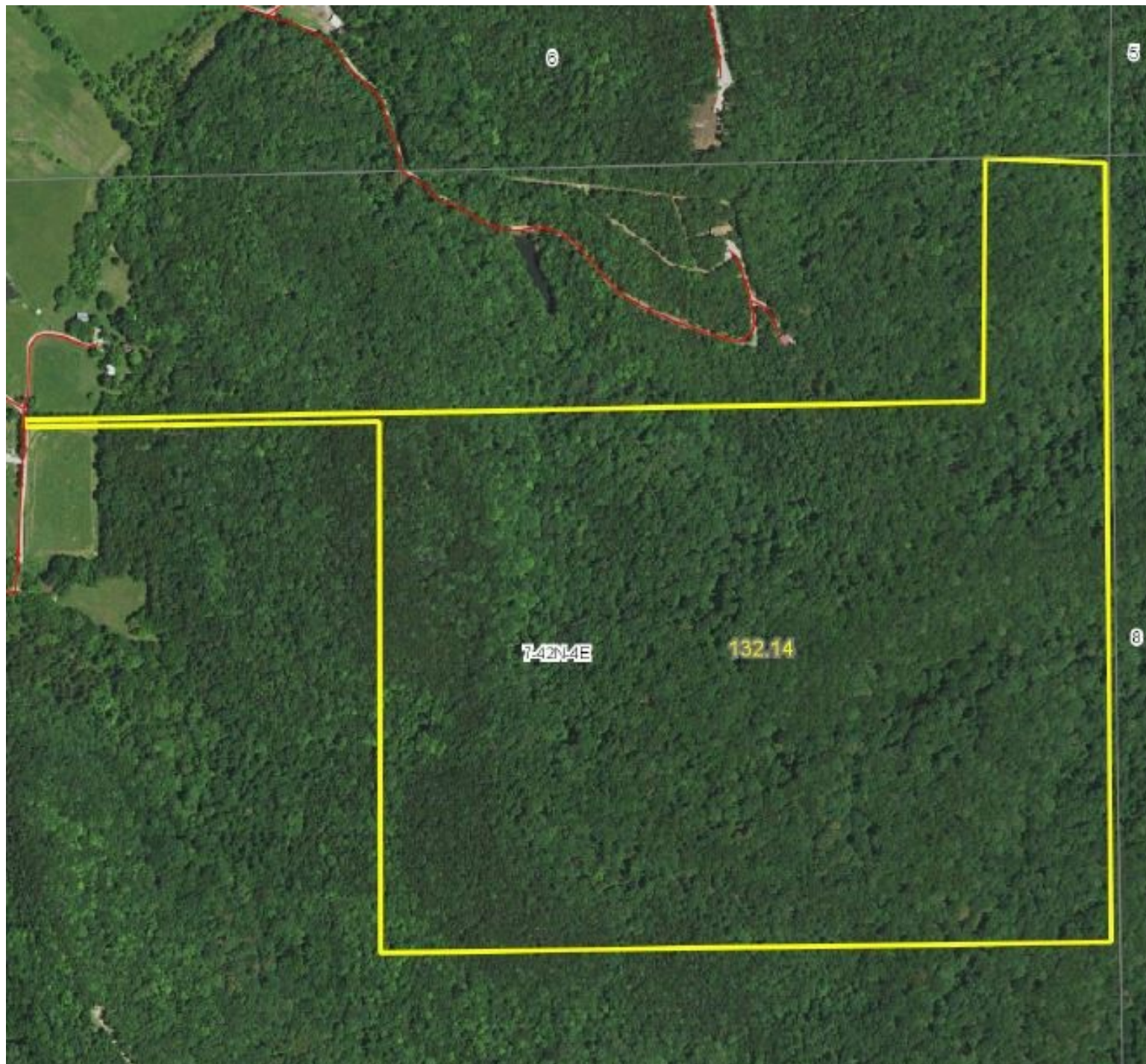
Trophy Properties and Auction  
15480 Clayton Road  
Suite 101  
Ballwin, MO 63011  
www.Trophypa.com  
leads@trophypa.com

# Private Timber Ground Acreage for Sale in Jefferson County Missouri



**T R O P H Y**  
PROPERTIES AND AUCTION  
LAND | RECREATIONAL | RESIDENTIAL

Trophy Properties and Auction • 855.573.5263 • leads@trophypro.com



**TAXES:** \$526

**TAX YEAR:** 2016

**TILLABLE:** 0 Acres

**TIMBERED:** 129 Acres

**PASTURED:** 0 Acres

