

Income Producing Farm with Small Farm House for Sale - Perry County, MO

www.TrophyPA.com • 855.573.5263 • leads@trophyPA.com

NEW PRICE!



PROPERTY ADDRESS:

3058 PCR 819
 Perryville, MO 63775

PRICE: \$240,000

ACRES: 49.14

COUNTY: Perry

PROPERTY DESCRIPTION:

This income producing 49.14 +/- acre farm is located a short 1 hour and 15 minutes down Hwy. 55 in Perry County. There is 35 +/- acres of tillable ground with timber patches at both the East and West ends for outstanding hunting areas.

A small, 8 room farm house sits on the property that could have up to 4 bedrooms and 1 bath. There is also a 60 x 40 barn as well as a large fenced 60 x 120 dog kennel located in the back of the house. With a little TLC, you could have all the wants for your future residence or place to just get away.

PROPERTY HIGHLIGHTS:

- 49.14 +/- acres in Perry County, MO
- 35 +/- acres tillable ground
- 10 +/- timber ground
- Small farm house
- 40x60 barn
- 60x120 dog kennel
- Small year round creek



PRESENTED BY:

KEN DAYLEY

Land Specialist - MO

M: (314) 4094568

P: (855) 573-5263 x704

kdayley@trophyPA.com

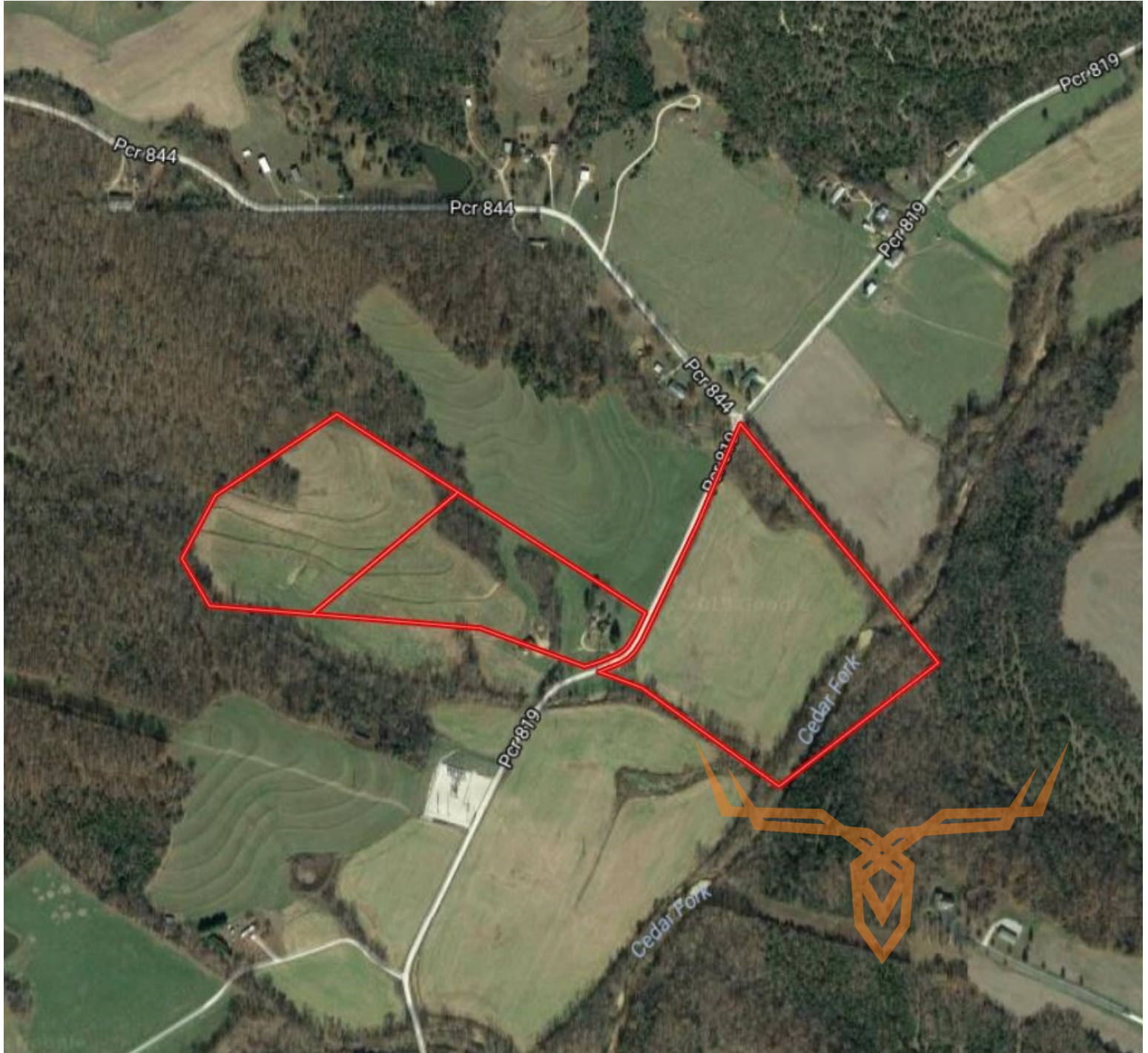
Trophy Properties and Auction
 15480 Clayton Road
 Suite 101
 Ballwin, MO 63011
 www.TrophyPA.com
 leads@trophyPA.com



T R O P H Y
PROPERTIES AND AUCTION
LAND | RECREATIONAL | RESIDENTIAL

Income Producing Farm with Small Farm House for Sale - Perry County, MO

www.TrophyPA.com • 855.573.5263 • leads@trohypa.com



Broker does not guarantee the accuracy of sq. ft., lot size, or other information, buyer is advised to independently verify the accuracy of information through personal inspection and with appropriate professionals

TAXES: \$535

TAX YEAR: 2017