

# Missouri Land for Sale at iAuction

## Linn County

Trophy Properties and Auction • 855.573.5263 • leads@trophyapa.com

ONLINE  
AUCTION



**BIDDING ENDS Wednesday, March 21, 2018 @ 10AM**  
**BID NOW at [www.TPABID.com](http://www.TPABID.com)**

**PROPERTY ADDRESS:**

00 Ember Drive  
Browning, MO 64630

**ACRES:** 91 +/- acres

**COUNTY:** Linn

**PROPERTY DESCRIPTION:**

91+/- acres offered in 2 tracts is located conveniently 2.4 miles west of Browning and .2 mile south of Hwy MM on Ember Dr. Farm Service Agency shows 62.41 acres of cropland. The balance of the farm is woods and wooded draws offering some excellent deer, turkey and quail hunting possibilities.

**Tract 1** – 58+/- acres with 43+/- acres of highly productive tillable land and excellent hunting.

**Tract 2** – 33+/- acres with 19+/- acres of highly productive tillable land and excellent hunting.

**PRESENTED BY:**



**JASON WALLINGFORD**

President - Auction Division

M: (314) 882-6971

P: 855.573.5263 x702

[jasonw@trophyapa.com](mailto:jasonw@trophyapa.com)

**Trophy Properties and Auction**

15480 Clayton Road Suite 101

Ballwin, MO 63011

[www.trophyapa.com](http://www.trophyapa.com)

[leads@trophyapa.com](mailto:leads@trophyapa.com)



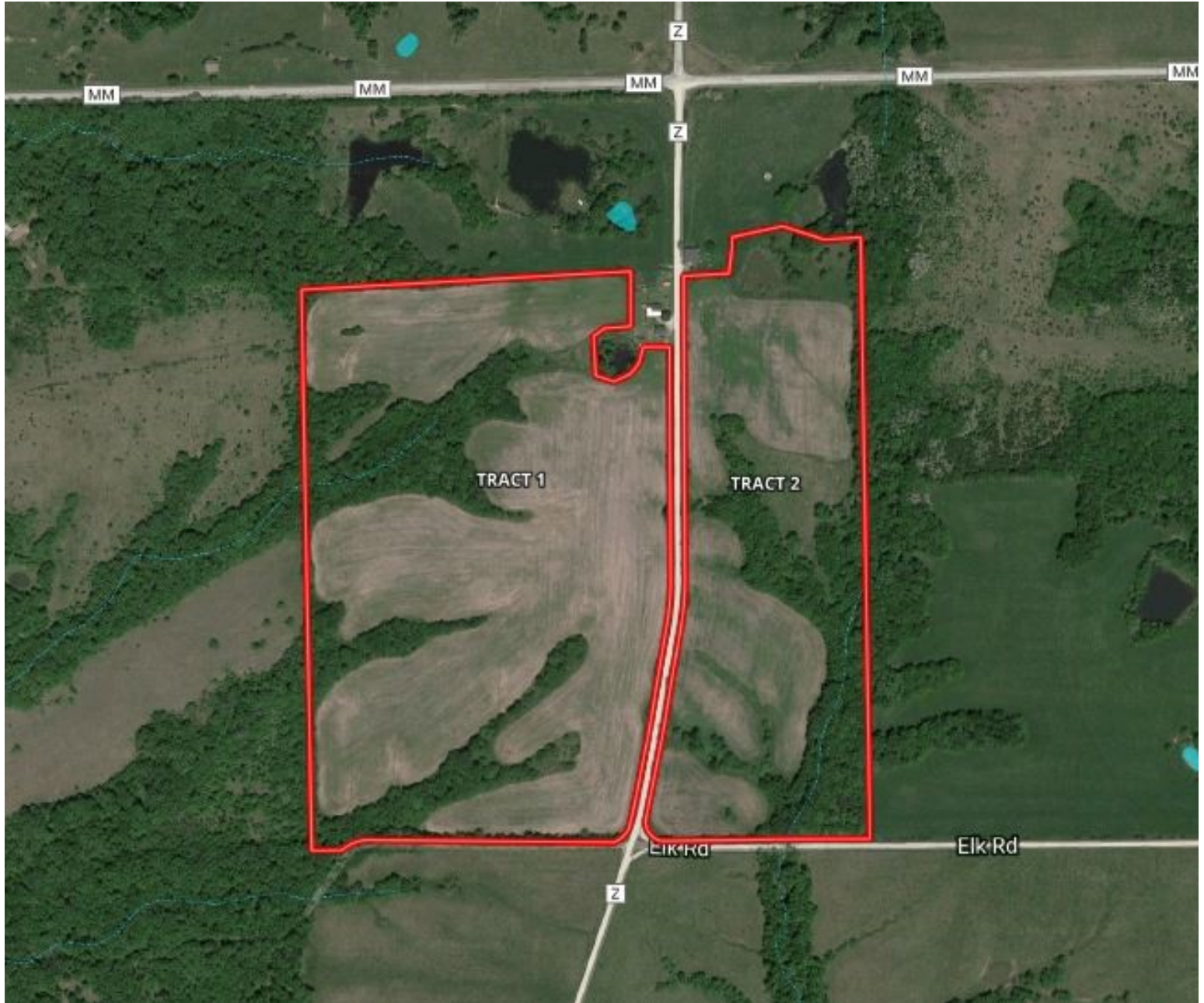
**T R O P H Y**  
PROPERTIES AND AUCTION  
LAND | RECREATIONAL | RESIDENTIAL

# Missouri Land for Sale at iAuction

## Linn County



Trophy Properties and Auction • 855.573.5263 • [leads@trophypro.com](mailto:leads@trophypro.com)



*All announcements made sale day take precedence over prior advertising either written or oral. The information is believed to be accurate; however, no liability for its accuracy, errors or omissions is assumed. All lines drawn on maps, photographs, etc. are approximate. Buyers should verify the information to their satisfaction.*

*There are no expressed or implied warranties pertaining to this property. Real estate is being sold "As Is, Where Is".*

