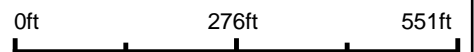


Aerial Map



map center: 40.511500, -89.950793



TROPHY
PROPERTIES AND AUCTION
LAND (RECREATIONAL) RESIDENTIAL

Maps Provided By:



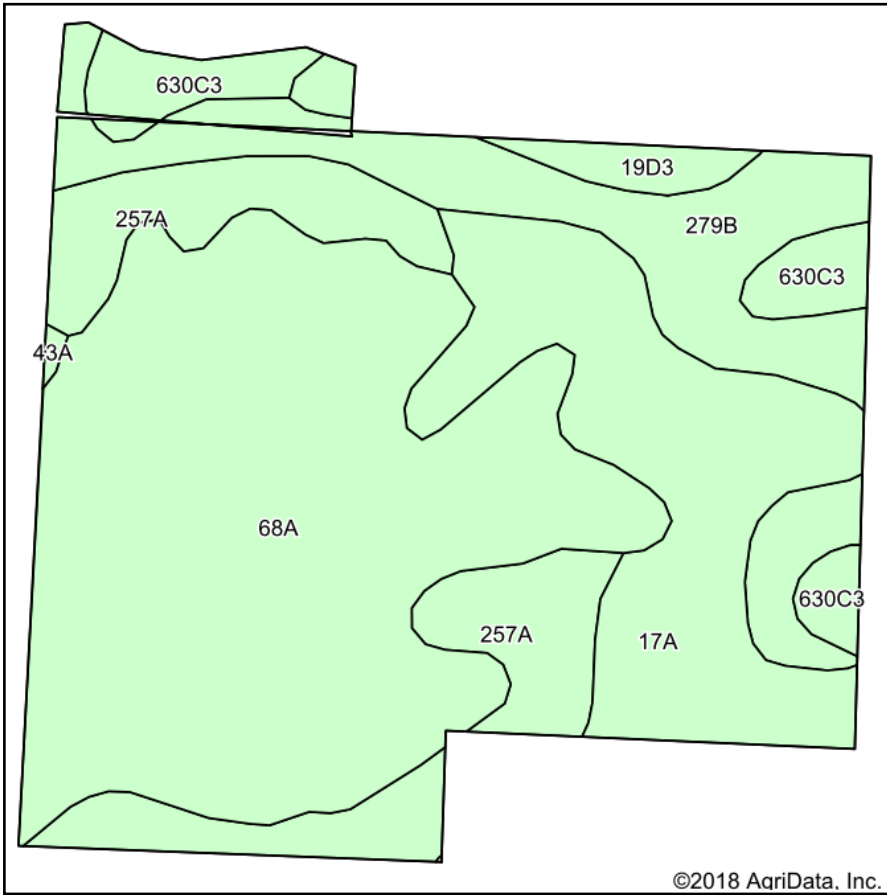
© AgriData, Inc. 2018 www.AgriDataInc.com

9-6N-5E
Fulton County
Illinois

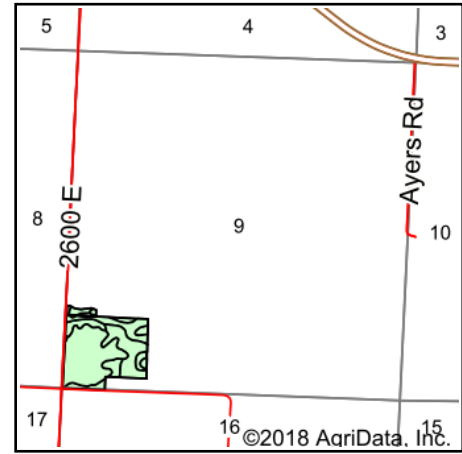


3/27/2018

Soils Map



Soils data provided by USDA and NRCS.



State: **Illinois**
 County: **Fulton**
 Location: **9-6N-5E**
 Township: **Banner**
 Acres: **29.89**
 Date: **3/27/2018**



TROPHY
 PROPERTIES AND AUCTION
 LAND PROFESSIONAL INCORPORATED

Maps Provided By:



Area Symbol: IL057, Soil Area Version: 12

Code	Soil Description	Acres	Percent of field	Il. State Productivity Index Legend	Subsoil rooting ^a	Corn Bu/A	Soybeans Bu/A	Wheat Bu/A	Oats Bu/A ^b	Sorghum ^c Bu/A	Alfalfa ^d hay, T/A	Grass-le ^e gume hay, T/A	Crop productivity index for optimum management
68A	Sable silty clay loam, 0 to 2 percent slopes	12.28	41.1%		FAV	192	63	74	99	0	0.00	5.77	143
17A	Keomah silt loam, 0 to 2 percent slopes	6.13	20.5%		FAV	161	51	65	83	0	0.00	5.14	119
**279B	Rozetta silt loam, 2 to 5 percent slopes	4.84	16.2%		FAV	**162	**50	**64	**83	0	**5.22	0.00	**119
257A	Clarksdale silt loam, 0 to 2 percent slopes	4.38	14.7%		FAV	174	56	69	89	0	0.00	5.27	128
**630C3	Navlys silty clay loam, 5 to 10 percent slopes, severely eroded	1.58	5.3%		FAV	**120	**39	**47	**54	0	0.00	**3.99	**89
**19D3	Sylvan silty clay loam, 10 to 18 percent slopes, severely eroded	0.68	2.3%		FAV	**122	**40	**49	**57	0	**3.25	0.00	**90
Weighted Average						172.7	55.6	67.8	88.3	*	0.92	4.41	127.9

Table: Optimum Crop Productivity Ratings for Illinois Soil by K.R. Olson and J.M. Lang, Office of Research, ACES, University of Illinois at Champaign-Urbana. Version: 1/2/2012 Amended Table S2 B811

Crop yields and productivity indices for optimum management (B811) are maintained at the following NRES web site: <http://soilproductivity.nres.illinois.edu/>

** Indexes adjusted for slope and erosion according to Bulletin 811 Table S3

^a UNF = unfavorable; FAV = favorable

^b Soils in the southern region were not rated for oats and are shown with a zero "0".

^c Soils in the northern region or in both regions were not rated for grain sorghum and are shown with a zero "0".

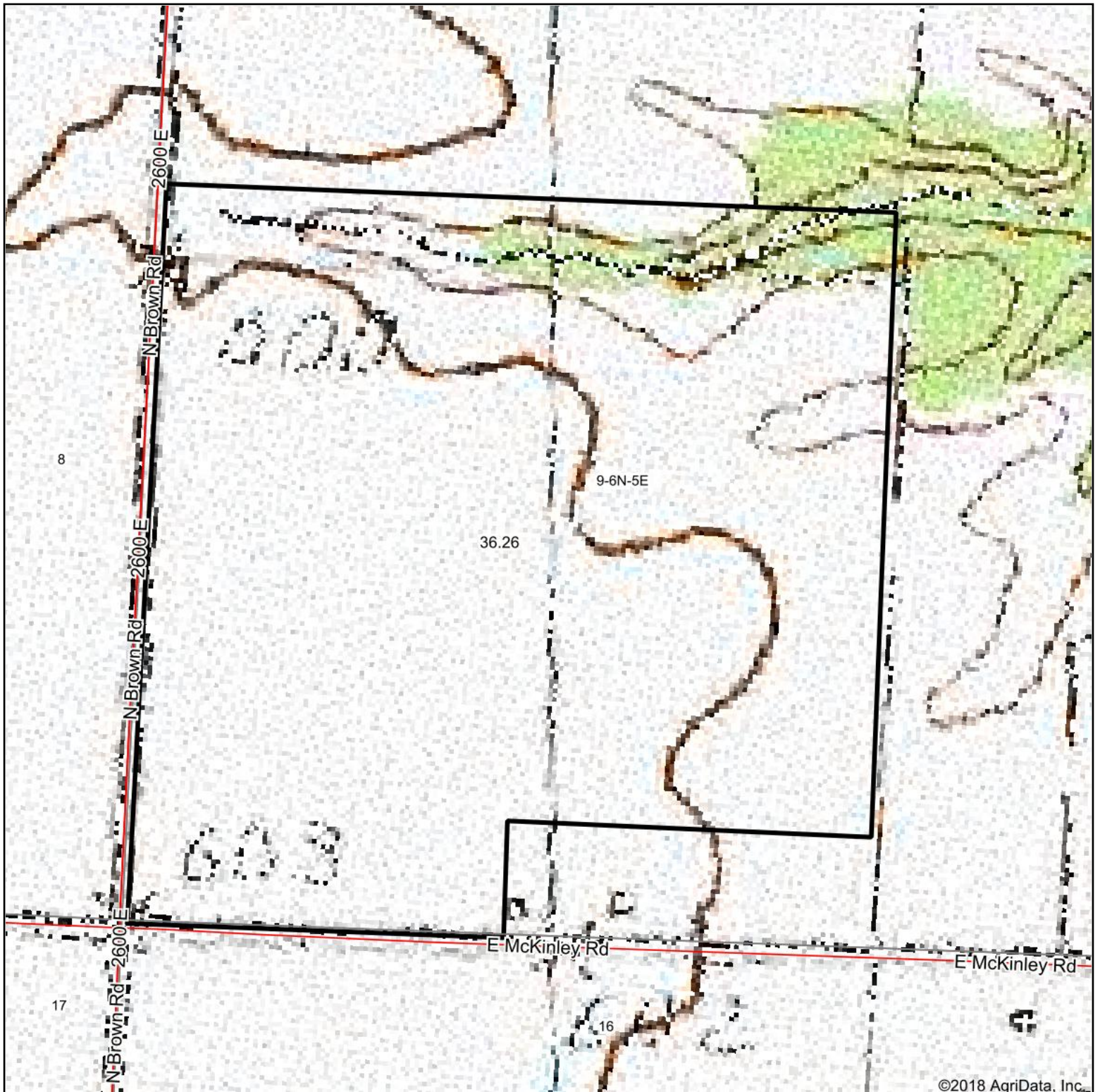
^d Soils in the poorly drained group were not rated for alfalfa and are shown with a zero "0".

^e Soils in the well drained group were not rated for grass-legume and are shown with a zero "0".

Soils data provided by USDA and NRCS. Soils data provided by University of Illinois at Champaign-Urbana.

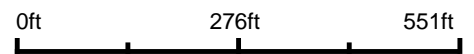
*c: Using Capabilities Class Dominant Condition Aggregation Method

Topography Map



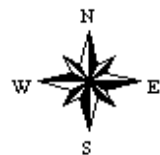
©2018 AgriData, Inc.

map center: 40.511500, -89.950793



Maps Provided By:
surety
CUSTOMIZED ONLINE MAPPING
© AgriData, Inc. 2018 www.AgriDataInc.com

9-6N-5E
Fulton County
Illinois



3/27/2018