



T R O P H Y
PROPERTIES AND AUCTION
LAND | RECREATIONAL | RESIDENTIAL

107 +/- Acre Missouri Hunting & Timber Ground for Sale - Maries County

www.TrophyPA.com • 855.573.5263 • leads@trophyha.com



PROPERTY ADDRESS:

17920 County Road 519
Vichy, MO 65580

PRICE: \$163,175

ACRES: 107

COUNTY: Maries

PROPERTY DESCRIPTION:

This Missouri hunting and timber ground for sale in Maries County is sure to please the avid hunter. A mixture of hardwoods, cedars, hills and deep draws will hold and produce those big whitetails and gobblers. As you can see in the pictures, this place has the potential for you to harvest that buck of a lifetime. Power lines across the gravel road and a few good building sites make this a great place to build that dream hunting cabin.

If this 107+/- acres isn't enough room for you and your buddies, there is another 98+/- acre tract that joins it that is also available. Located a short distance off HWY 63 this property gives you the convenience to get to your stand and enjoy those fall evening hunts. If you have been looking for a convenient, productive and affordable hunting property don't pass this one up!

PROPERTY HIGHLIGHTS:

- 107 +/- acres
- Timber ground
- Creek through property
- Great trail system
- Food plots
- Excellent cover
- County Road frontage
- Whitetail deer hunting



PRESENTED BY:

DEREK KEEVER

Land Specialist - MO

M: (573) 619-7763

P: (855) 573-5263 x728

dkeever@trophyha.com

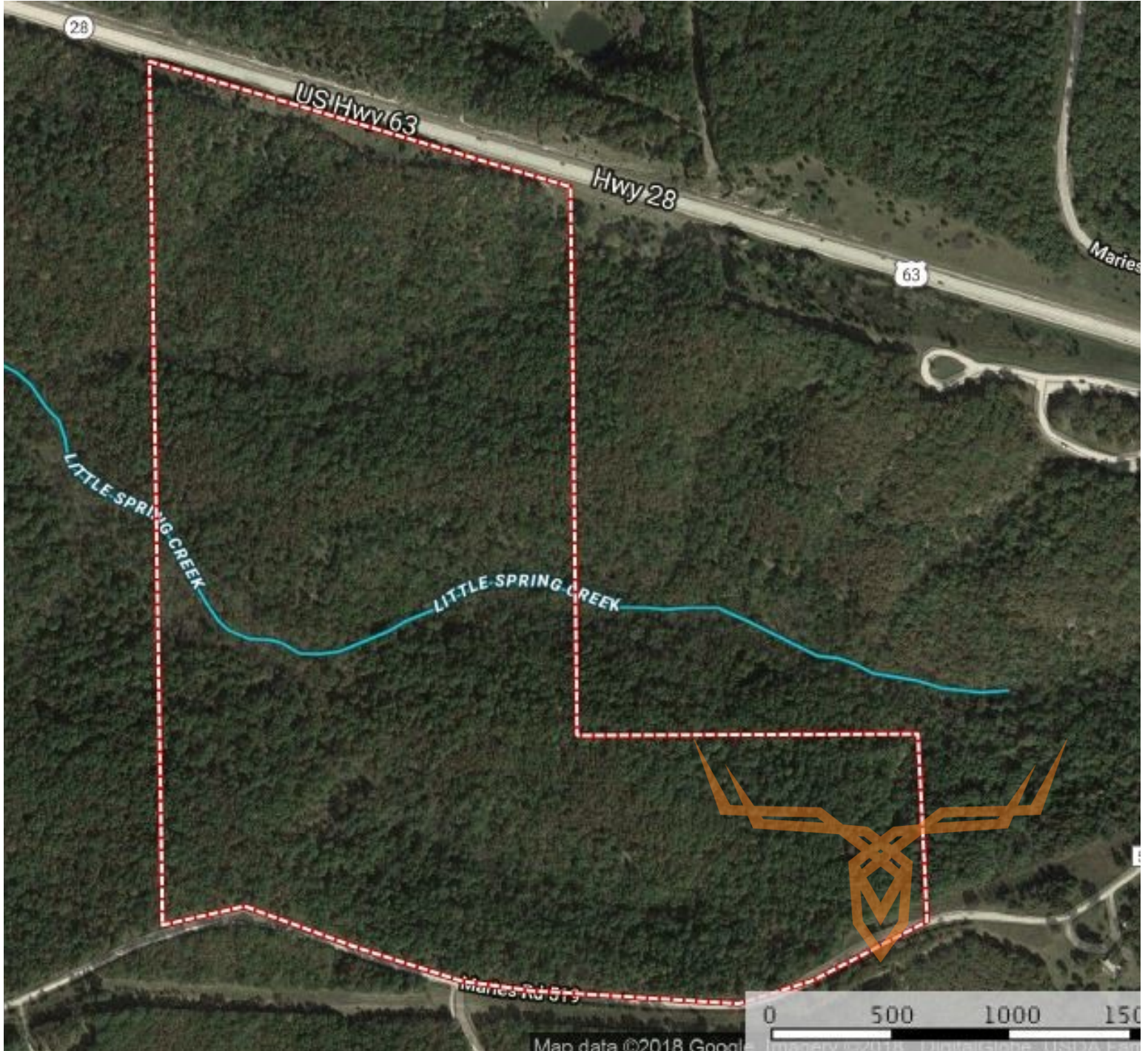
Trophy Properties and Auction
15480 Clayton Road
Suite 101
Ballwin, MO 63011
www.Trophyha.com
leads@trophyha.com



107 +/- Acre Missouri Hunting & Timber Ground for Sale - Maries County

T R O P H Y
PROPERTIES AND AUCTION
LAND | RECREATIONAL | RESIDENTIAL

www.TrophyPA.com • 855.573.5263 • leads@trohypa.com



Broker does not guarantee the accuracy of sq. ft., lot size, or other information, buyer is advised to independently verify the accuracy of information through personal inspection and with appropriate professionals

TAXES: \$34

TAX YEAR: 2017