



# 98 +/- Acre Missouri Hunting & Timber Ground for Sale - Maries County

**T R O P H Y**  
PROPERTIES AND AUCTION  
LAND | RECREATIONAL | RESIDENTIAL

www.TrophyPA.com • 855.573.5263 • leads@trophyPA.com



## PROPERTY ADDRESS:

00 County Road 519  
Vichy, MO 65580

**PRICE:** \$149,450

**ACRES:** 98

**COUNTY:** Maries

## PROPERTY DESCRIPTION:

This Maries County timber ground is sure to please the avid hunter. A mixture of hardwoods, cedars, hills and deep draws will hold and produce those big whitetails and gobblers. As you can see in the pictures, this property has the potential for you to harvest that buck of a lifetime. Power lines across the gravel road and good building sites make this that perfect place to build that dream cabin.

If 98+/- acres isn't enough, there is an additional 107+/- acres that joins this property that is also available. Acreage at this price is hard to find in Maries County so don't pass this up!

## PROPERTY HIGHLIGHTS:

- 98 +/- Acres
- Creek
- Great trail system
- Food plots
- Excellent cover
- County road frontage
- Whitetail deer hunting



## PRESENTED BY:

### DEREK KEVER

**Land Specialist - MO**

M: (573) 619-7763

P: (855) 573-5263 x728

dkever@trophyPA.com

Trophy Properties and Auction  
15480 Clayton Road  
Suite 101  
Ballwin, MO 63011  
www.TrophyPA.com  
leads@trophyPA.com

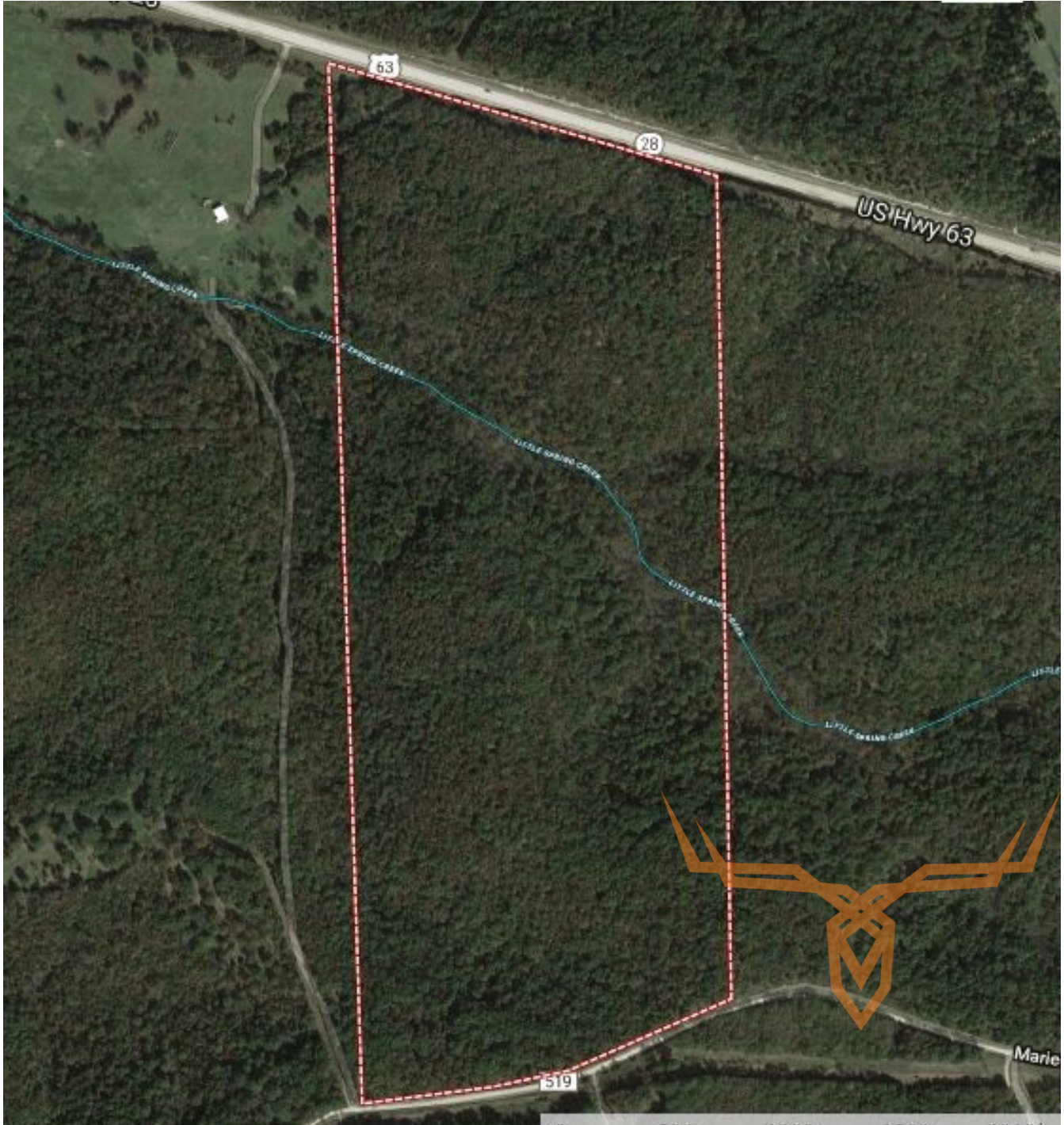




**T R O P H Y**  
PROPERTIES AND AUCTION  
LAND | RECREATIONAL | RESIDENTIAL

# 98 +/- Acre Missouri Hunting & Timber Ground for Sale - Maries County

[www.TrophyPA.com](http://www.TrophyPA.com) • 855.573.5263 • [leads@trophyPA.com](mailto:leads@trophyPA.com)



Broker does not guarantee the accuracy of sq. ft., lot size, or other information, buyer is advised to independently verify the accuracy of information through personal inspection and with appropriate professionals

**TAXES: \$34**

**TAX YEAR: 2017**