



# Missouri Land for Sale at iAuction - Putnam County

Trophy Properties and Auction • 855.573.5263 • [leads@trophypa.com](mailto:leads@trophypa.com)

ONLINE  
AUCTION



**BIDDING ENDS Wednesday, October 3rd at 10:00AM**  
**BID NOW at [www.Trophypa.com](http://www.Trophypa.com)**

## PROPERTY ADDRESS:

00 Hwy FF  
Livonia, MO 63551

**ACRES:** 144 +/- acres

**COUNTY:** Putnam

## PROPERTY DESCRIPTION:

This awesome 144+/- acre farm in NE Missouri is a hunter's paradise. Located at the end of a dead end road lies this rolling to gently rolling wooded farm loaded with wildlife. The 10+/- acre secluded food plot located next to the Baugh Branch Creek and the interior road system sets this farm apart from many others. If managed correctly this farm has the ability to grow and hold many deer and turkey with all the abundant food sources, such as acorns from all the white oak timber and the 10+/- acre food plot.

If you're looking for an affordable hunting farm in one of the top trophy producing counties in the state of Missouri you need look no further.

## PRESENTED BY:



### JIM REBER

**Land Specialist - MO**

M: (515) 238-9925

P: 855.573.5263 x711

[jreber@trophypa.com](mailto:jreber@trophypa.com)

### JASON WALLINGFORD

**President - Auction Division**

M: (314) 882-6971

P: 855.573.5263 x702

[jasonw@trophypa.com](mailto:jasonw@trophypa.com)

## Trophy Properties and Auction

15480 Clayton Road Suite 101

Ballwin, MO 63011

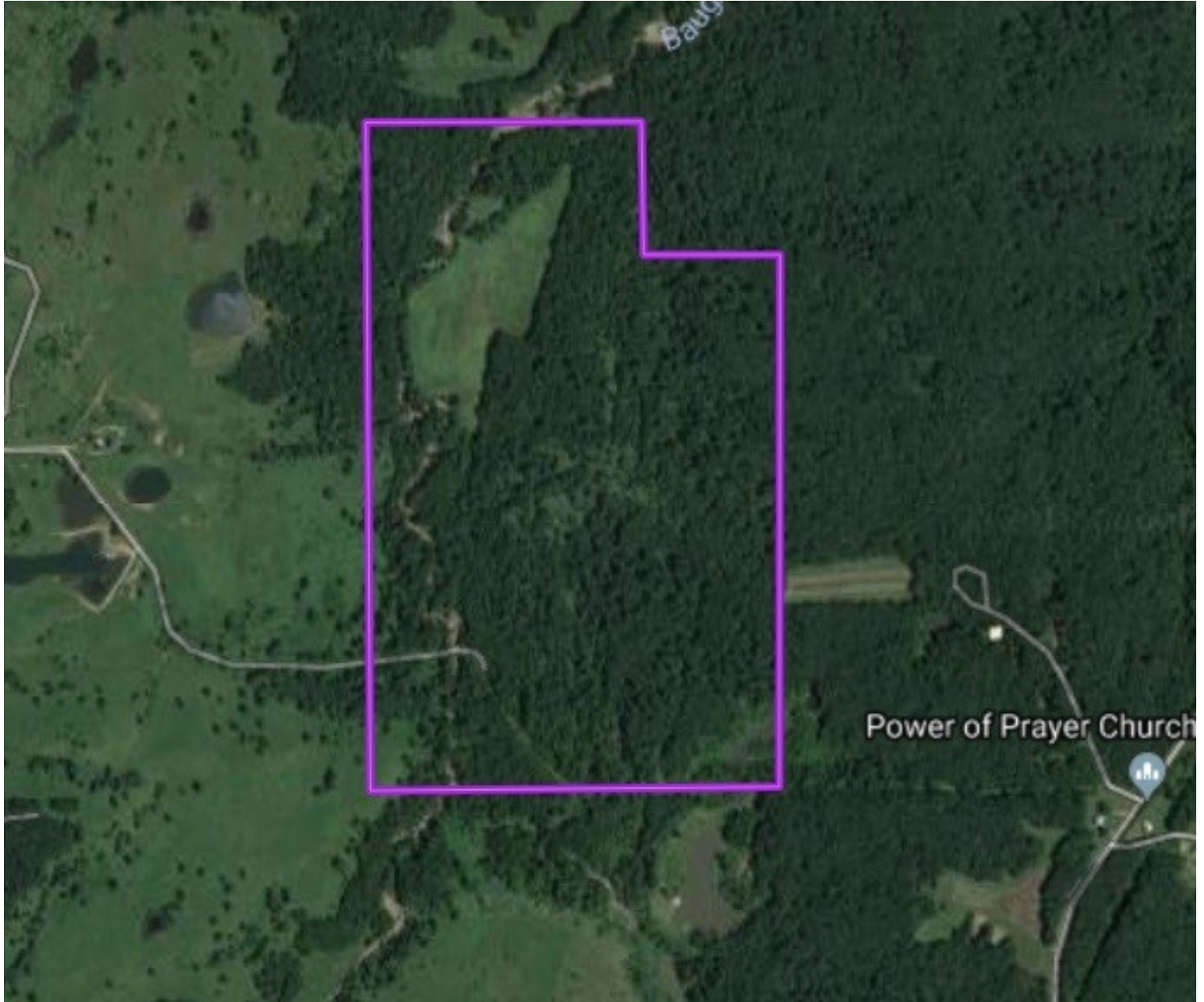
[www.trophypa.com](http://www.trophypa.com)

[leads@trophypa.com](mailto:leads@trophypa.com)



# Missouri Land for Sale at iAuction - Putnam County

Trophy Properties and Auction • 855.573.5263 • [leads@trophypa.com](mailto:leads@trophypa.com)



*All announcements made sale day take precedence over prior advertising either written or oral. The information is believed to be accurate; however, no liability for its accuracy, errors or omissions is assumed. All lines drawn on maps, photographs, etc. are approximate. Buyers should verify the information to their satisfaction.*

*There are no expressed or implied warranties pertaining to this property. Real estate is being sold "As Is, Where Is".*