



# 92 +/- Acre Missouri Hunting or Cattle Farm for Sale - Gasconade County

**T R O P H Y**  
PROPERTIES AND AUCTION  
LAND | RECREATIONAL | RESIDENTIAL

www.TrophyPA.com • 855.573.5263 • leads@trophyPA.com



## PROPERTY ADDRESS:

00 Schafferkoetter Road  
Owensville, MO 65066

**PRICE:** \$318,000

**ACRES:** 92.157

**COUNTY:** Gasconade

## PROPERTY DESCRIPTION:

Located less than 5 miles south of Owensville, MO lies 92 +/- acres. This property has excellent fencing and is perfect for anyone wanting to raise cattle. There are several great building sites on the property. The deer hunting and turkey hunting is excellent in this area.

Whether you are looking for place to call home, or if you want your recreational property this is one you must see! All this and more just minutes away from the conveniences of Owensville, MO.



**PRESENTED BY:**

**PHIL BROWN**

**Broker/Partner**

M: (314) 753-7444

P: (855) 573-5263 x700

philbrown@trophyPA.com

## PROPERTY HIGHLIGHTS:

- 92 +/- acres in Gasconade County
- Less than 5 miles south of Owensville, MO on Hwy 19
- Excellent fencing
- Turkey and deer hunting
- Great building sites
- Diverse timber on property including several walnut trees

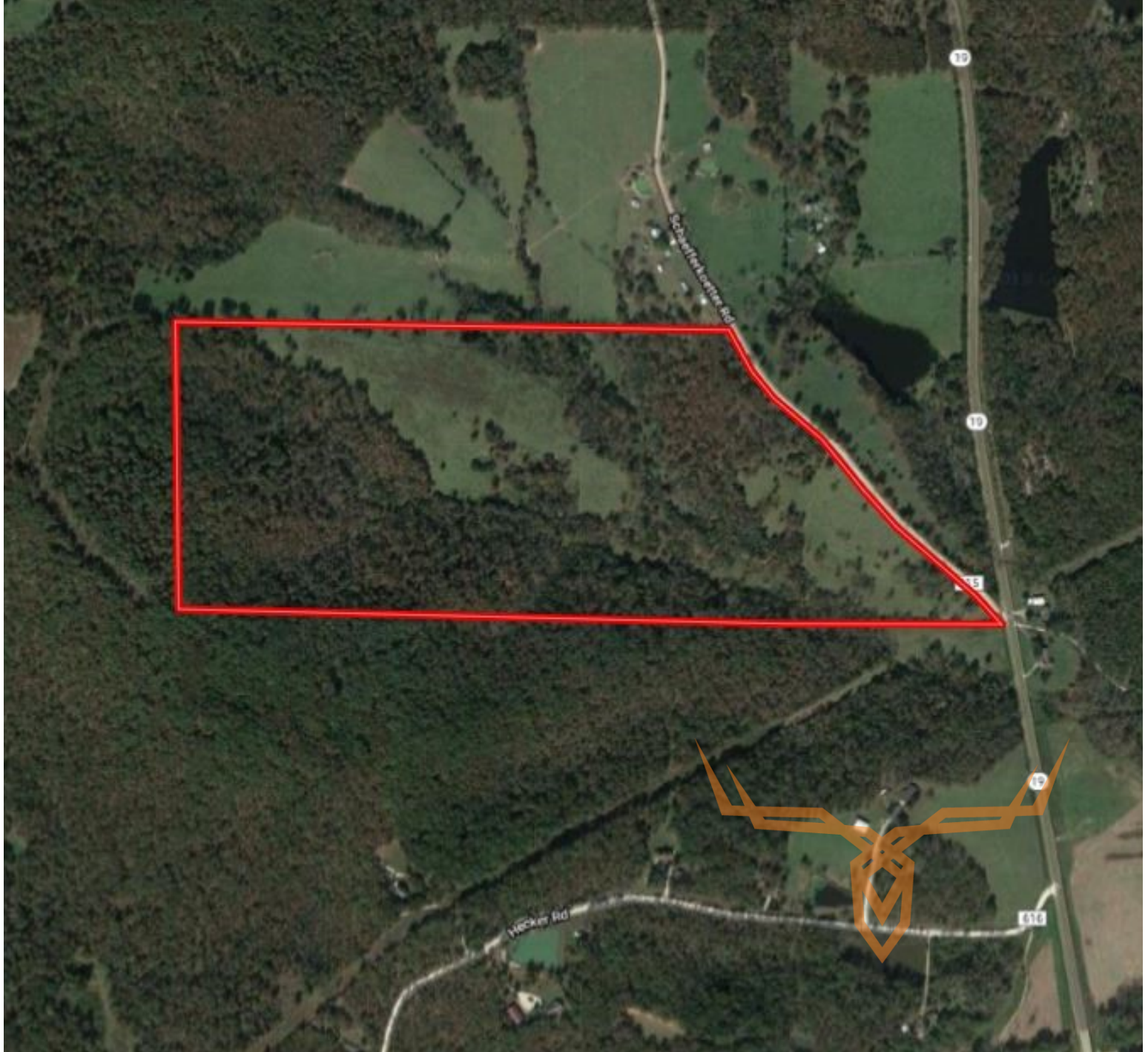
Trophy Properties and Auction  
15480 Clayton Road  
Suite 101  
Ballwin, MO 63011  
www.TrophyPA.com  
leads@trophyPA.com



# 92 +/- Acre Missouri Hunting or Cattle Farm for Sale - Gasconade County

**T R O P H Y**  
PROPERTIES AND AUCTION  
LAND | RECREATIONAL | RESIDENTIAL

[www.TrophyPA.com](http://www.TrophyPA.com) • 855.573.5263 • [leads@trohypa.com](mailto:leads@trohypa.com)



Broker does not guarantee the accuracy of sq. ft., lot size, or other information, buyer is advised to independently verify the accuracy of information through personal inspection and with appropriate professionals

**TAXES: \$59**

**TAX YEAR: 2017**