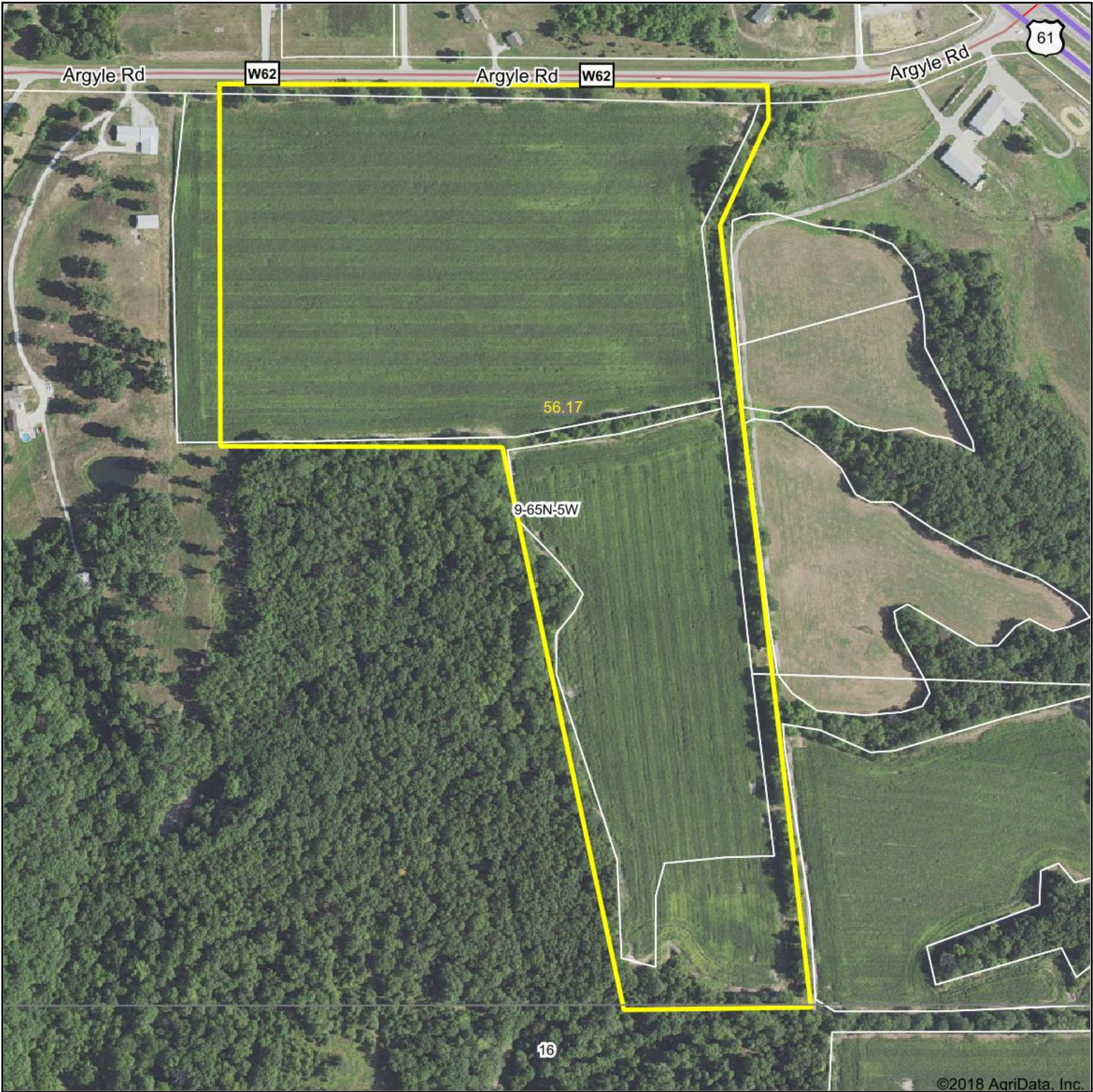


Aerial Map



©2018 AgriData, Inc.

map center: 40.440127, -91.443253

0ft 436ft 873ft



TROPHY
PROPERTIES AND AUCTION
LAND (RECREATIONAL) RESIDENTIAL

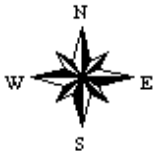
Maps Provided By:



© AgriData, Inc. 2018

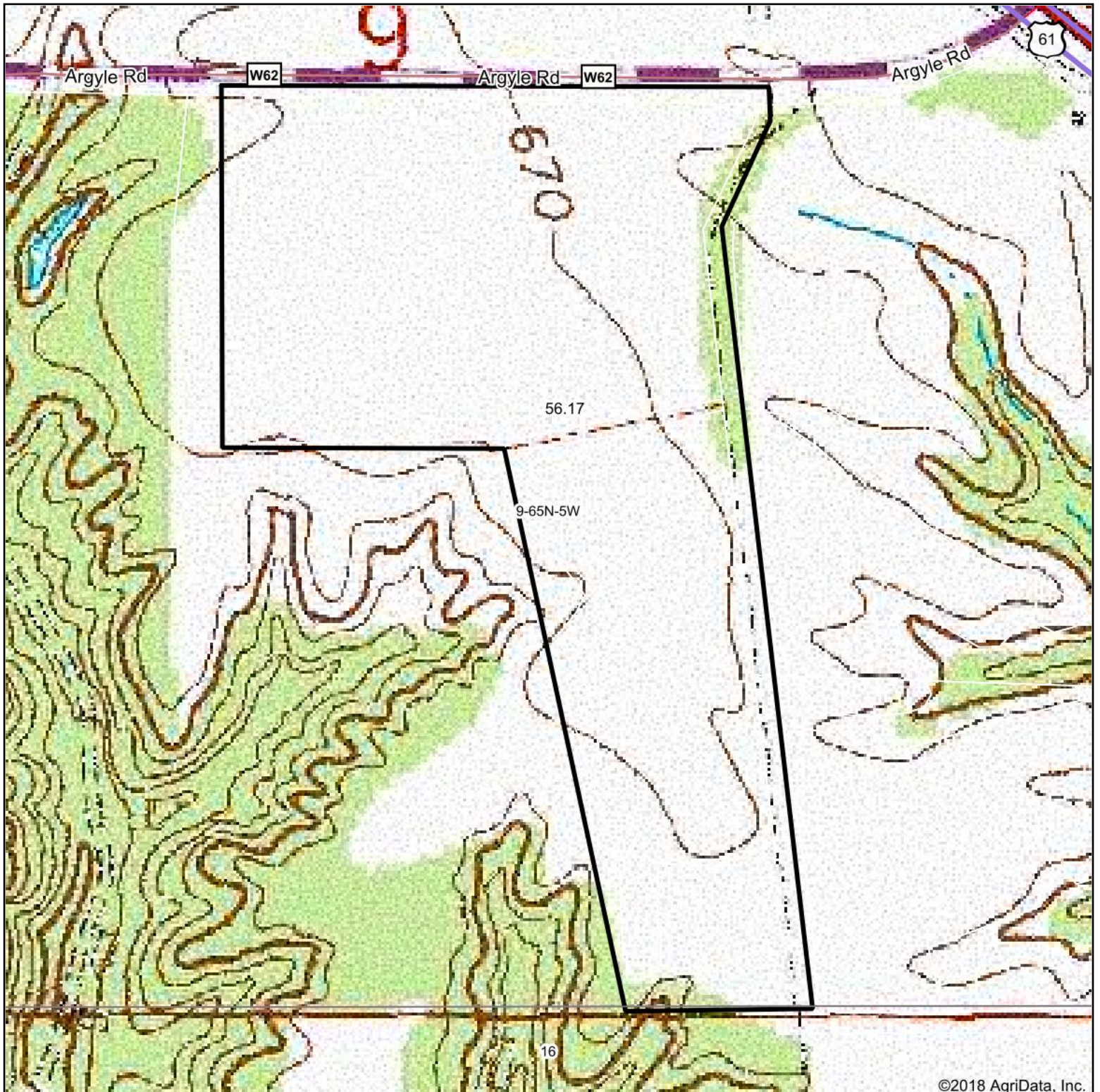
www.AgriDataInc.com

9-65N-5W
Lee County
Iowa



11/6/2018

Topography Map



©2018 AgriData, Inc.

map center: 40.440127, -91.443253

0ft 436ft 873ft



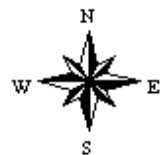
Maps Provided By:



© Agridata, Inc. 2018

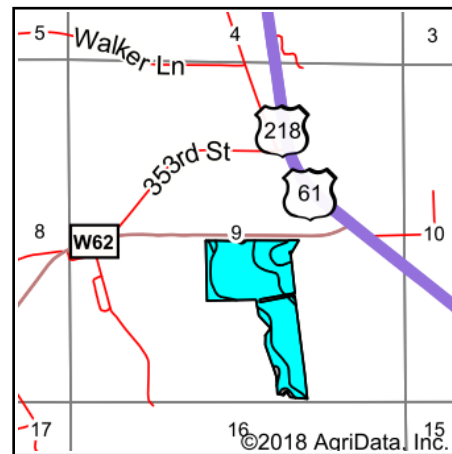
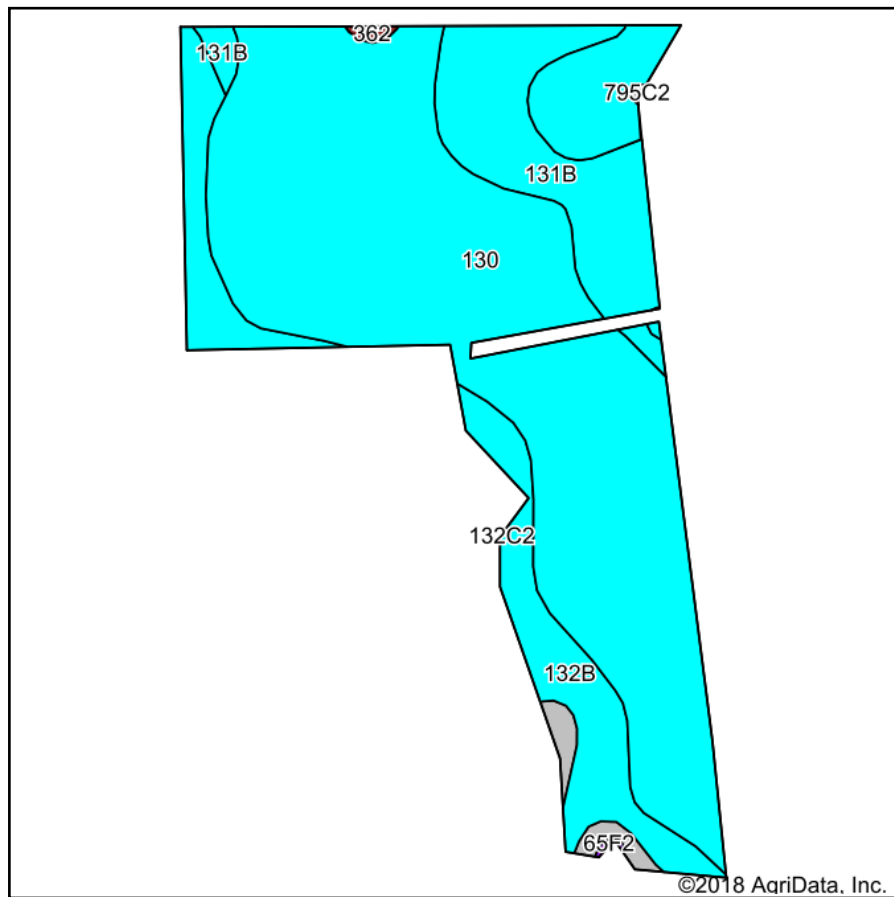
www.AgridataInc.com

9-65N-5W
Lee County
Iowa



11/6/2018

Soils Map



State: **Iowa**
 County: **Lee**
 Location: **9-65N-5W**
 Township: **Jackson**
 Acres: **46.89**
 Date: **11/6/2018**

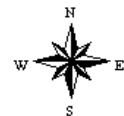


TROPHY
 PROPERTIES AND AUCTION
 LAND INVESTMENT SOLUTIONS

Maps Provided By:



surety
 CUSTOMIZED ONLINE MAPPING
 © AgriData, Inc. 2018 www.AgriDataInc.com



Area Symbol: IA111, Soil Area Version: 26

Code	Soil Description	Acres	Percent of field	Non-Irr Class Legend	Non-Irr Class *c	CSR2**	CSR	*n NCCPI Soybeans
130	Belinda silt loam, 0 to 2 percent slopes	30.17	64.3%		IIIw	47	63	57
132B	Weller silt loam, 2 to 5 percent slopes	6.89	14.7%		IIIe	67	60	84
131B	Pershing silt loam, 2 to 5 percent slopes	6.59	14.1%		IIIe	70	67	62
132C2	Weller silt loam, 5 to 9 percent slopes, moderately eroded	2.44	5.2%		IIIe	59	40	68
795D2	Ashgrove silt loam, 9 to 14 percent slopes, moderately eroded	0.68	1.5%		IVe	7	5	37
362	Haig silt loam, 0 to 2 percent slopes	0.12	0.3%		IIw	83	70	66
Weighted Average						53.3	61.1	*n 62

**IA has updated the CSR values for each county to CSR2.

*n: The aggregation method is "Weighted Average using major components"

*c: Using Capabilities Class Dominant Condition Aggregation Method

Soils data provided by USDA and NRCS.