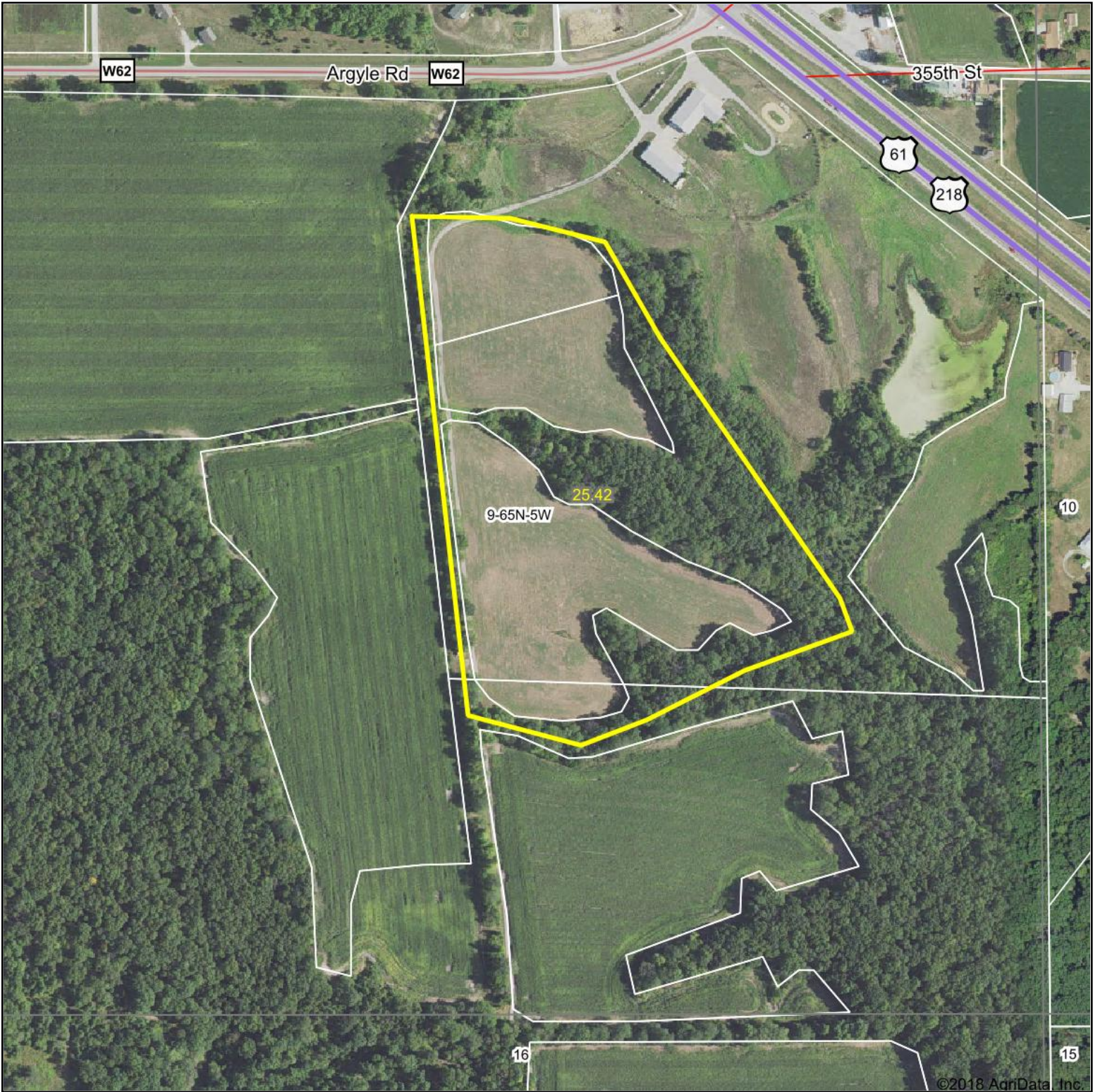


Aerial Map



map center: 40.440109, -91.440202



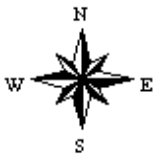
TROPHY  
PROPERTIES AND AUCTION  
LAND (RECREATIONAL) RESIDENTIAL

Maps Provided By:



© AgriData, Inc. 2018      www.AgriDataInc.com

9-65N-5W  
Lee County  
Iowa

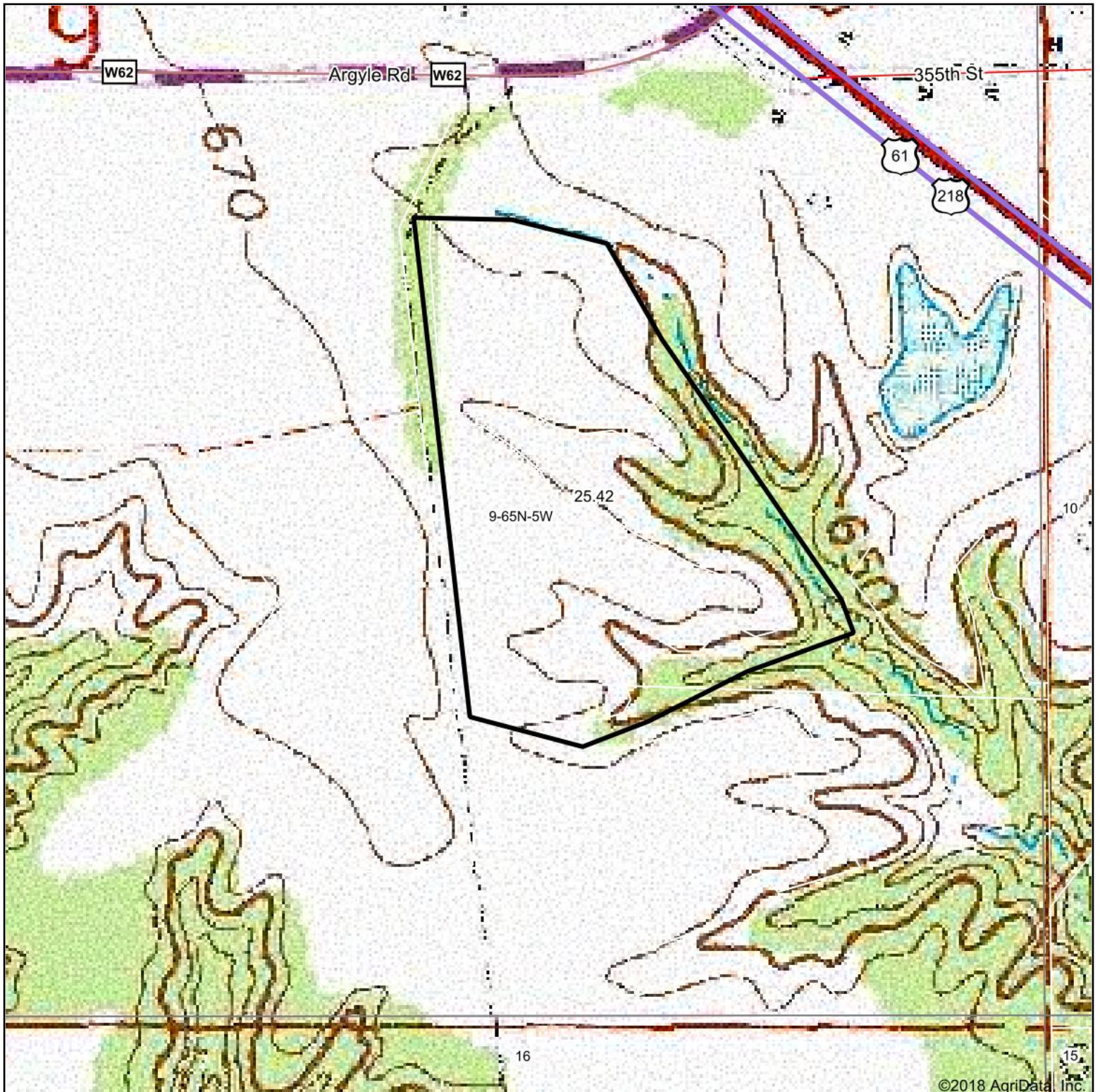


11/6/2018

Field borders provided by Farm Service Agency as of 5/21/2008.



# Topography Map



©2018 AgriData, Inc.

map center: 40.440109, -91.440202

0ft 430ft 860ft

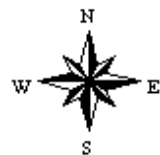


Maps Provided By:



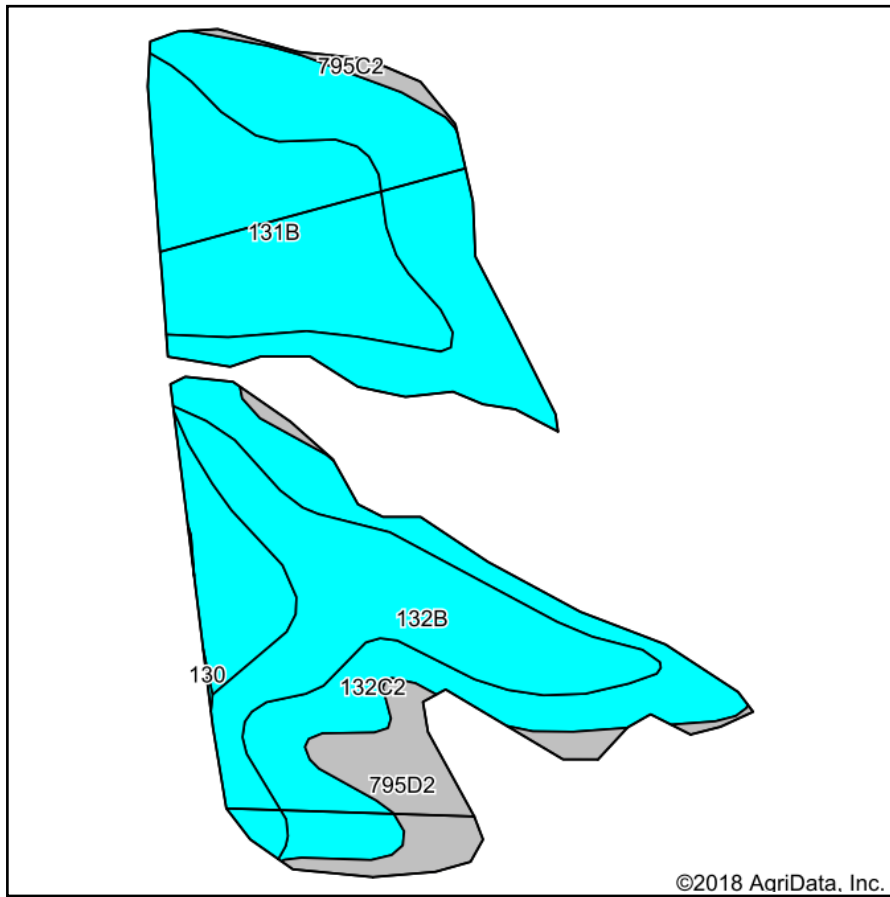
© AgriData, Inc. 2018 www.AgriDataInc.com

**9-65N-5W**  
**Lee County**  
**Iowa**

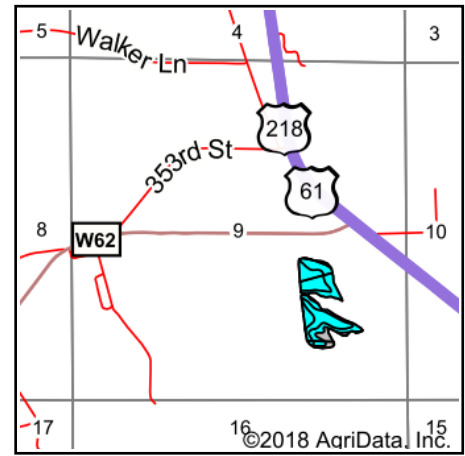


11/6/2018

# Soils Map



Soils data provided by USDA and NRCS.



State: **Iowa**  
 County: **Lee**  
 Location: **9-65N-5W**  
 Township: **Jackson**  
 Acres: **15.42**  
 Date: **11/6/2018**



Maps Provided By:



## Area Symbol: IA111, Soil Area Version: 26

Code	Soil Description	Acres	Percent of field	Non-Irr Class Legend	Non-Irr Class *c	CSR2**	CSR	*n NCCPI Soybeans
132C2	Weller silt loam, 5 to 9 percent slopes, moderately eroded	6.35	41.2%		IIIe	59	40	68
131B	Pershing silt loam, 2 to 5 percent slopes	4.29	27.8%		IIIe	70	67	62
132B	Weller silt loam, 2 to 5 percent slopes	3.28	21.3%		IIIe	67	60	84
795D2	Ashgrove silt loam, 9 to 14 percent slopes, moderately eroded	1.27	8.2%		IVe	7	5	37
795C2	Ashgrove silt loam, 5 to 9 percent slopes, moderately eroded	0.23	1.5%		IVe	6	15	40
Weighted Average						58.7	48.5	*n 66.8

\*\*IA has updated the CSR values for each county to CSR2.

\*n: The aggregation method is "Weighted Average using major components"

\*c: Using Capabilities Class Dominant Condition Aggregation Method

Soils data provided by USDA and NRCS.