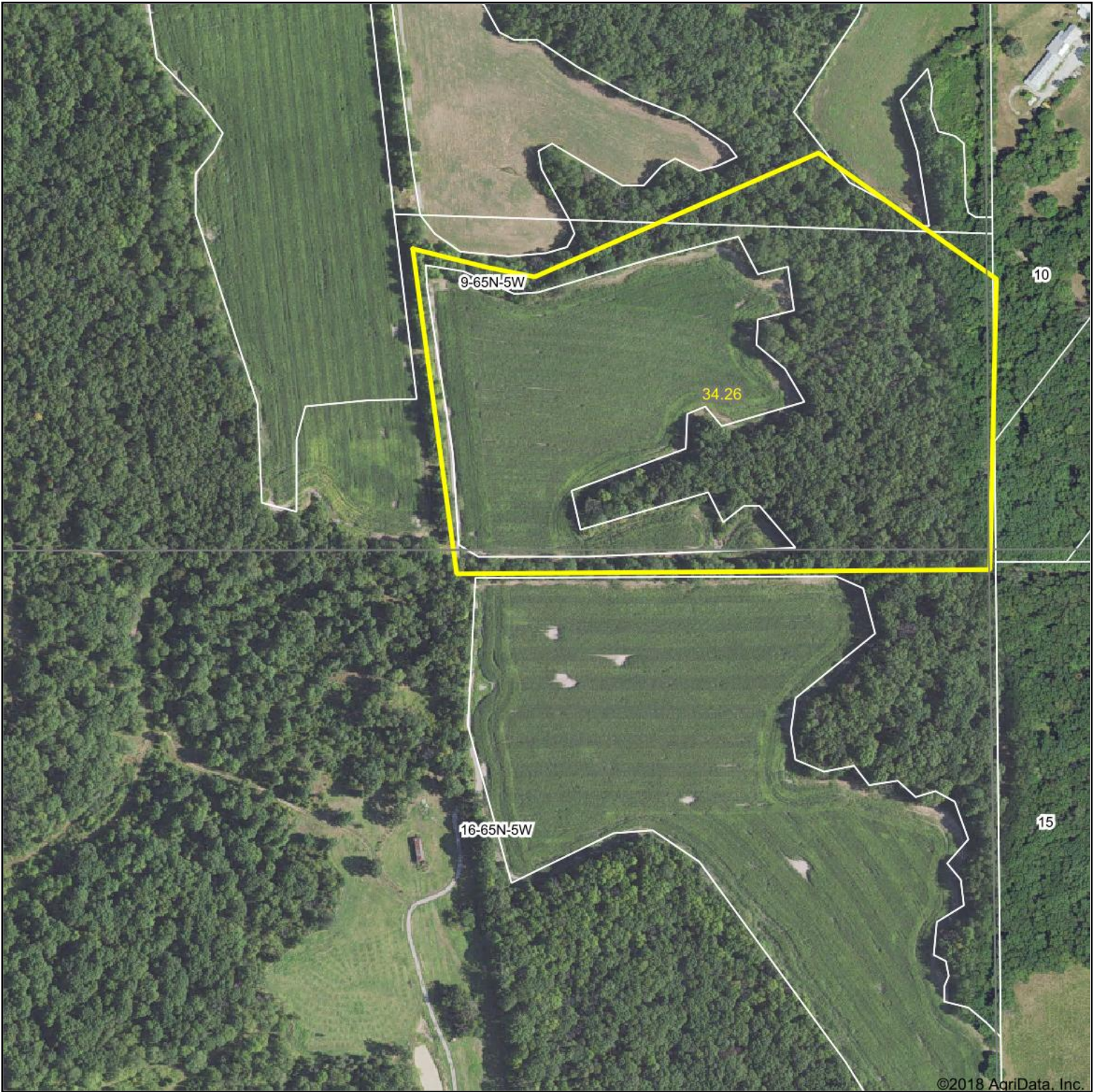


Aerial Map



©2018 AgriData, Inc.

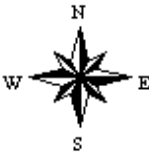
map center: 40.436567, -91.439741



Maps Provided By:

© AgriData, Inc. 2018 www.AgriDataInc.com

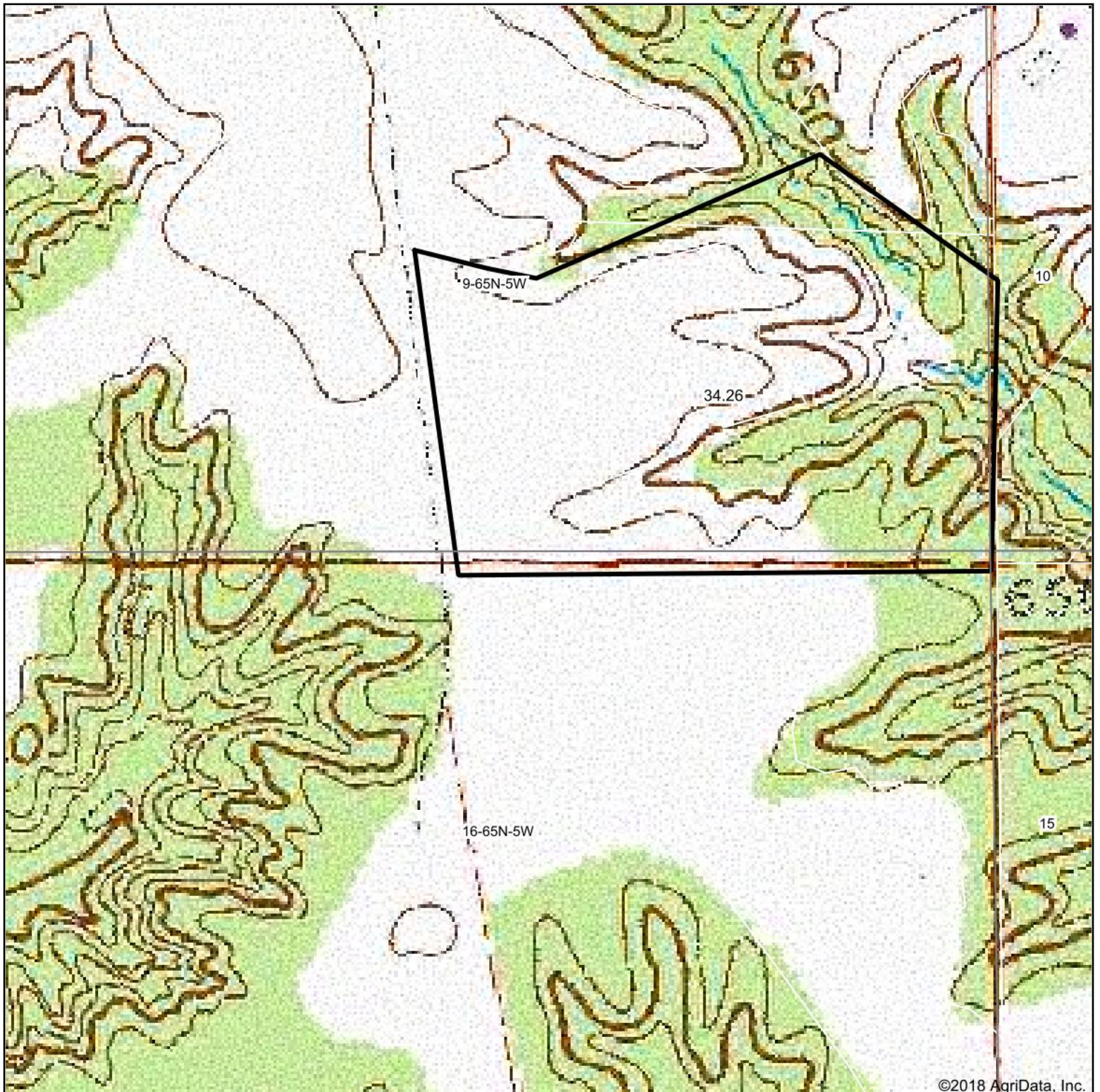
9-65N-5W
Lee County
Iowa



11/6/2018

Field borders provided by Farm Service Agency as of 5/21/2008.

Topography Map



map center: 40.436567, -91.439741

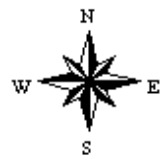
0ft 430ft 860ft



Maps Provided By:

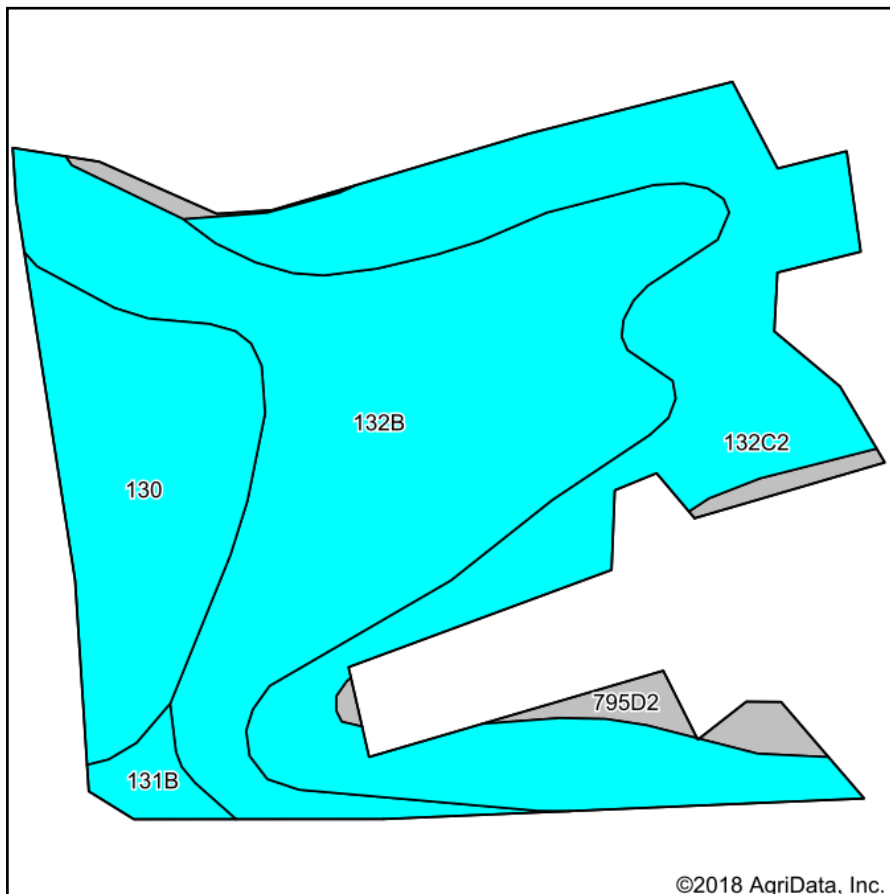


9-65N-5W
Lee County
Iowa

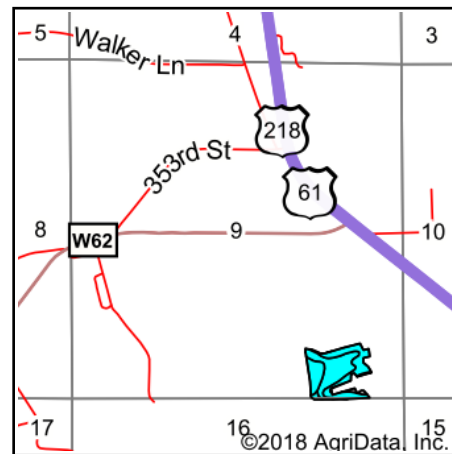


11/6/2018

Soils Map



Soils data provided by USDA and NRCS.



State: **Iowa**
 County: **Lee**
 Location: **9-65N-5W**
 Township: **Jackson**
 Acres: **14.51**
 Date: **11/6/2018**



TROPHY
PROPERTIES AND AUCTION
LAND PROFESSIONAL ASSOCIATION

Maps Provided By:



surety
CUSTOMIZED ONLINE MAPPING

© AgriData, Inc. 2018

www.AqriDataInc.com



Area Symbol: IA111, Soil Area Version: 26

Code	Soil Description	Acres	Percent of field	Non-Irr Class Legend	Non-Irr Class *c	CSR2**	CSR	*n NCCPI Soybeans
132B	Weller silt loam, 2 to 5 percent slopes	6.08	41.9%		IIIe	67	60	84
132C2	Weller silt loam, 5 to 9 percent slopes, moderately eroded	5.26	36.3%		IIIe	59	40	68
130	Belinda silt loam, 0 to 2 percent slopes	2.37	16.3%		IIIw	47	63	57
795D2	Ashgrove silt loam, 9 to 14 percent slopes, moderately eroded	0.54	3.7%		IVe	7	5	37
131B	Pershing silt loam, 2 to 5 percent slopes	0.26	1.8%		IIIe	70	67	62
Weighted Average						58.7	51.3	*n 71.6

**IA has updated the CSR values for each county to CSR2.

*n: The aggregation method is "Weighted Average using major components"

*c: Using Capabilities Class Dominant Condition Aggregation Method

Soils data provided by USDA and NRCS.