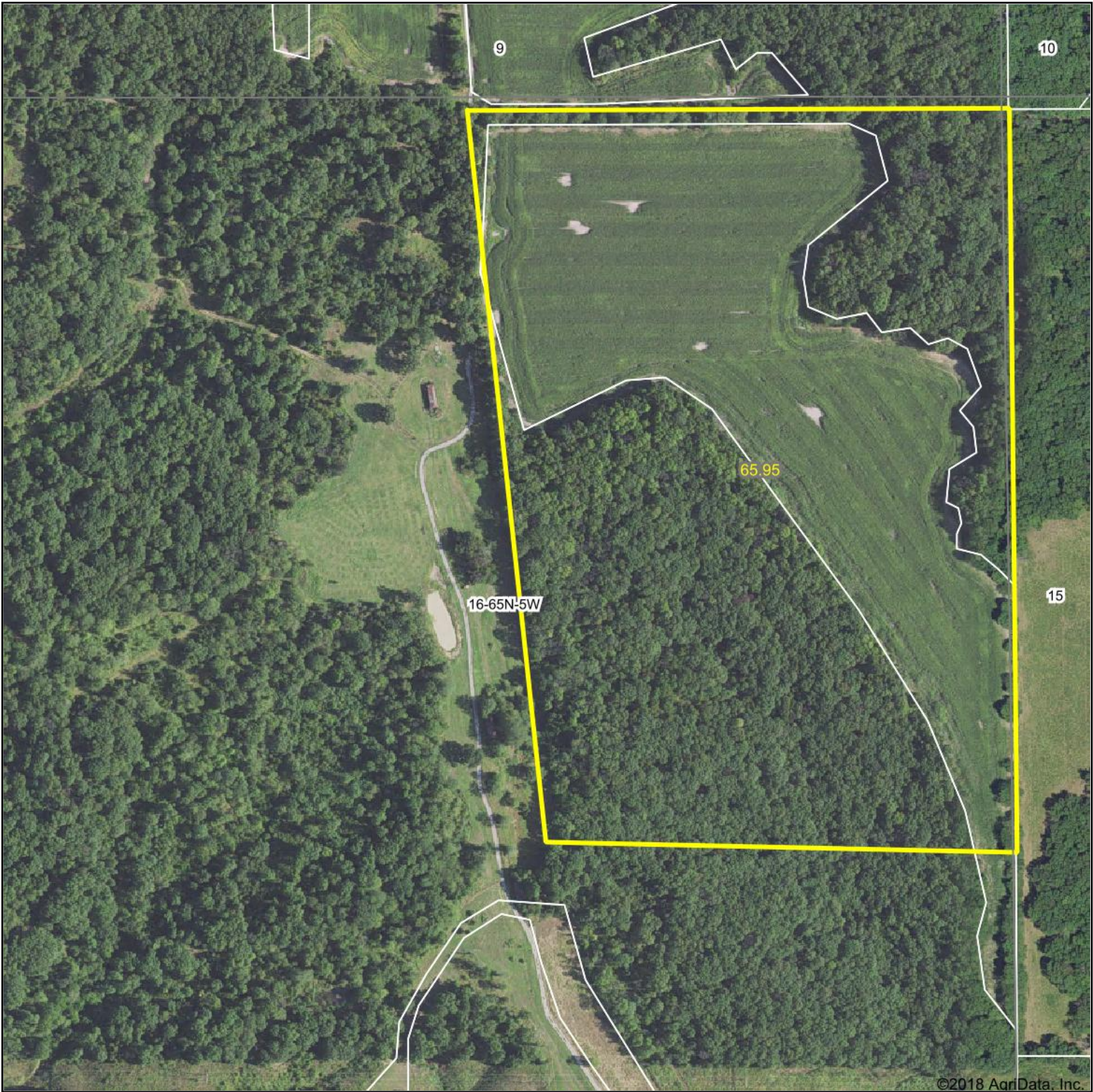
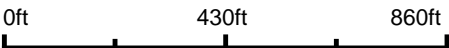


Aerial Map



map center: 40.433122, -91.439947

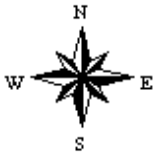


LAND (RECREATIONAL) RESIDENTIAL

Maps Provided By:

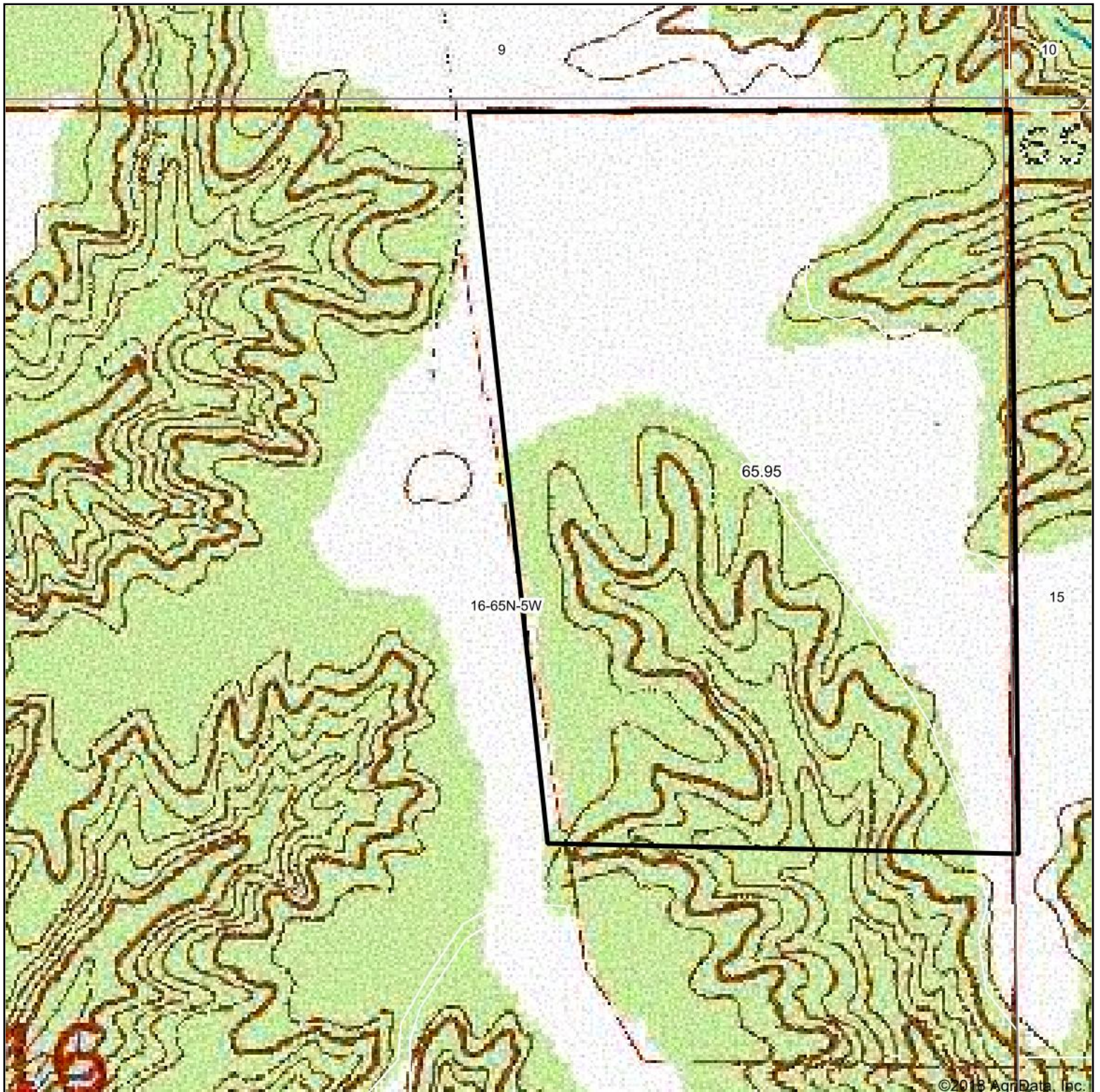


16-65N-5W
Lee County
Iowa



11/6/2018

Topography Map



©2018 AgriData, Inc.

map center: 40.433122, -91.439947

0ft 430ft 860ft



LAND | RECREATIONAL | RESIDENTIAL

Maps Provided By:

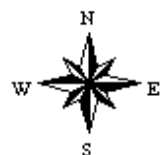


surety
CUSTOMIZED ONLINE MAPPING

© AgriData, Inc. 2018

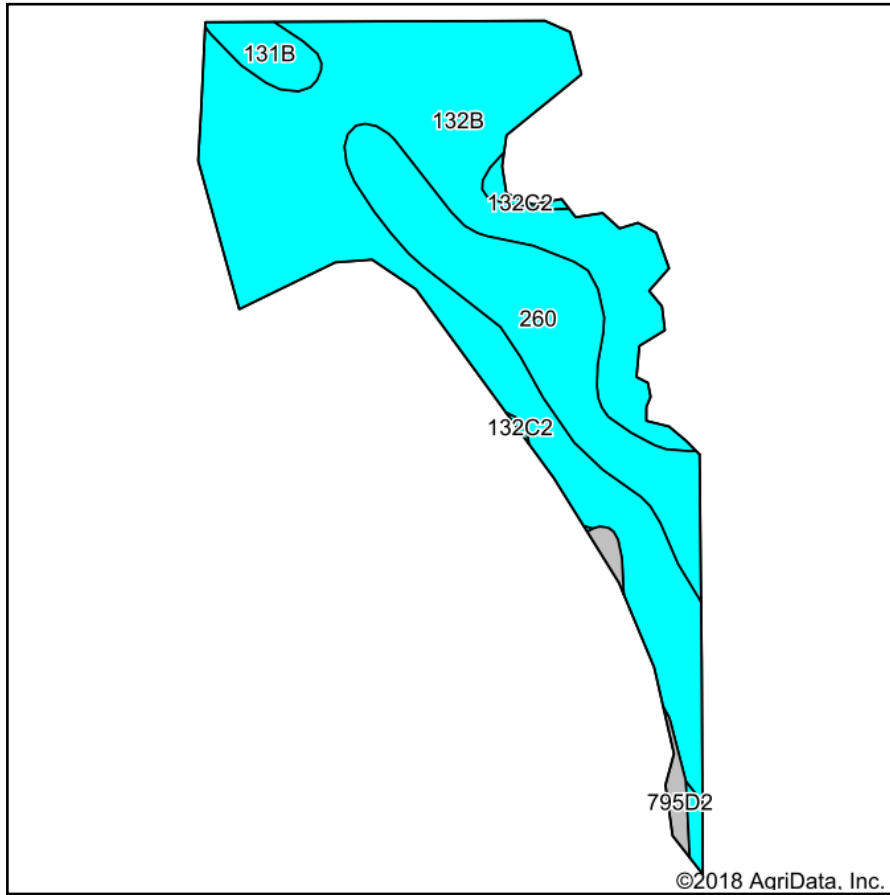
www.AgrIDataInc.com

16-65N-5W
Lee County
Iowa

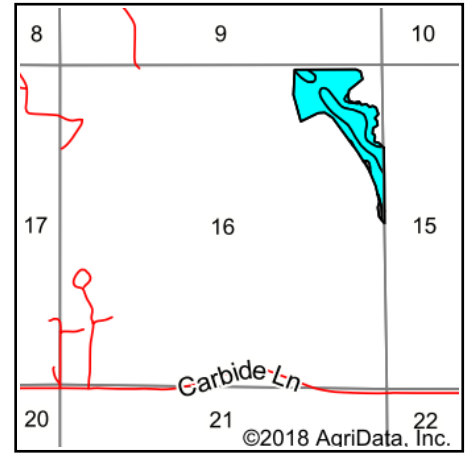


11/6/2018

Soils Map



Soils data provided by USDA and NRCS.



State: **Iowa**
 County: **Lee**
 Location: **16-65N-5W**
 Township: **Jackson**
 Acres: **30.42**
 Date: **11/6/2018**



TROPHY
 PROPERTIES AND AUCTION
 LAND INVESTMENT MANAGEMENT

Maps Provided By:



Area Symbol: IA111, Soil Area Version: 26

Code	Soil Description	Acres	Percent of field	Non-Irr Class Legend	Non-Irr Class *c	CSR2**	CSR	*n NCCPI Soybeans
132B	Weller silt loam, 2 to 5 percent slopes	21.35	70.2%		IIIe	67	60	84
260	Beckwith silt loam, 0 to 2 percent slopes	7.07	23.2%		IIIw	51	56	63
131B	Pershing silt loam, 2 to 5 percent slopes	0.99	3.3%		IIIe	70	67	62
795D2	Ashgrove silt loam, 9 to 14 percent slopes, moderately eroded	0.54	1.8%		IVe	7	5	37
132C2	Weller silt loam, 5 to 9 percent slopes, moderately eroded	0.47	1.5%		IIIe	59	40	68
Weighted Average						62.2	58	*n 77.3

**IA has updated the CSR values for each county to CSR2.

*n: The aggregation method is "Weighted Average using major components"

*c: Using Capabilities Class Dominant Condition Aggregation Method

Soils data provided by USDA and NRCS.