



17.5 +/- Acre Illinois Hunting and Fishing Property for Sale - Bond County

T R O P H Y
PROPERTIES AND AUCTION
LAND | RECREATIONAL | RESIDENTIAL

www.TrophyPA.com • (855) 573-5263 • leads@trophyapa.com

PRICE IMPROVED



PROPERTY ADDRESS:
486 Ripson Bridge Ave.
Sorento, IL 62086

PRICE: \$129,000
ACRES: 17.5
COUNTY: Bond

PROPERTY HIGHLIGHTS:

- Fully stocked lake
- Hunting and fishing
- Mature timber
- Perfect place to get away for the week-ends
- Full camper hook up along with a cabin
- Excellent home site
- 45 minutes from St. Louis

PROPERTY DESCRIPTION:

This 17.5 +/- acres in Bond County is the perfect weekend getaway spot with both hunting and fishing!! It has mature timber and a 1/2 acre lake that is fully stocked.

This place is a must see and would be the perfect place for your forever home!!

It also comes with a 14 x 20 cabin with electric, water access and a septic system in place. Seller also put in a full camper hook up! It has an excellent gravel road access back to the edge of the lake where the cabin is located.



PRESENTED BY:

SCOTT ATHMER

Land Specialist - IL

M: (618) 830-6192

P: (855) 573-5263 x739

sathmer@trophyapa.com

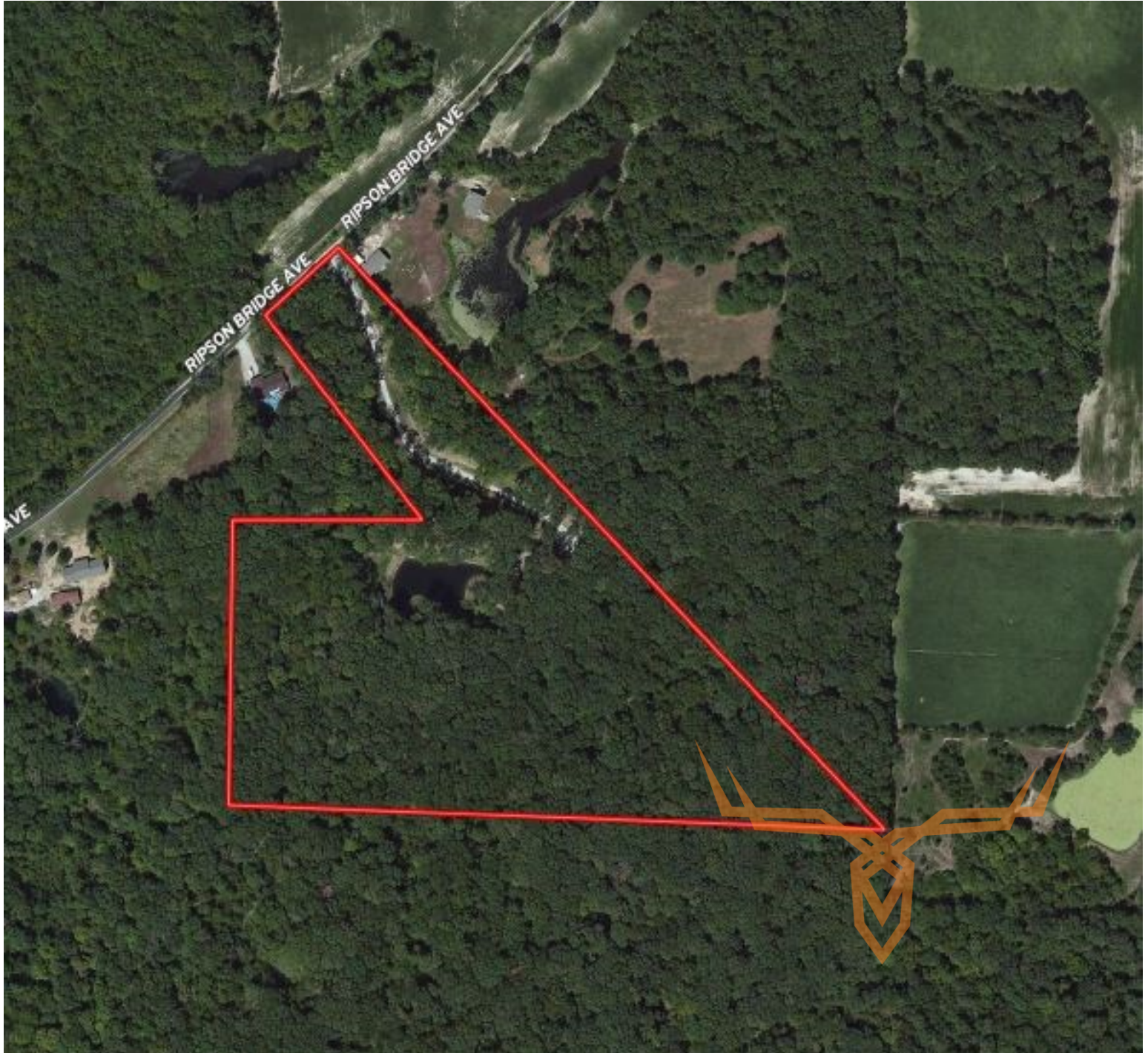
Trophy Properties and Auction
15480 Clayton Road
Suite 101
Ballwin, MO 63011
www.Trophyapa.com
leads@trophyapa.com



17.5 +/- Acre Illinois Hunting and Fishing Property for Sale - Bond County

T R O P H Y
PROPERTIES AND AUCTION
LAND | RECREATIONAL | RESIDENTIAL

www.TrophyPA.com • (855) 573-5263 • leads@trophyPA.com



Broker does not guarantee the accuracy of sq. ft., lot size, or other information, buyer is advised to independently verify the accuracy of information through personal inspection and with appropriate professionals

TAXES: \$12

TAX YEAR: 2017