

# Pike County Missouri 64 +/- Acre Hunting Farm for Sale

www.TrophyPA.com • (855) 573-5263 • leads@trophyha.com



## PROPERTY ADDRESS:

00 Pike 252  
 Louisiana, MO 63353

**PRICE:** \$243,200

**ACRES:** 64

**COUNTY:** Pike

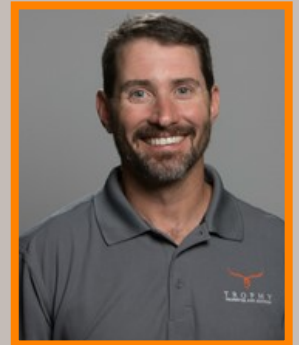
## PROPERTY DESCRIPTION:

This 64+/- acre Pike County Missouri property is a perfect hunting farm and is nestled into the most desirable area of the county. The neighborhood has many large landowners who have strict management plans for mature bucks. The state record archery buck lived and was harvested very close to this property.

A 30 X 45 pole barn is also on the property with electricity to the edge of the property near the barn. Three tillable fields are also planted in food plots to help hold the large deer population. This farm has 59 acres of thick timbered bedding area which means the deer will be on this property during daylight hours. Along with cover and food, this farm has a small wildlife watering pond to help hold the abundant wildlife population.

## PROPERTY HIGHLIGHTS:

- 64 +/- acres
- Located in area of Pike County known for trophy whitetail deer hunting
- 30 x 45 pole barn
- Electricity to edge of property
- Established food plots
- Thick timber bedding areas
- Small watering pond



**PRESENTED BY:**

**JASON CLEVELAND**

**Broker/Partner**

M: 636.751.4579

P: 855.573.5263 x701

jcleland@trophyha.com

Trophy Properties and Auction

15480 Clayton Road

Suite 101

Ballwin, MO 63011

www.Trophyha.com

leads@trophyha.com

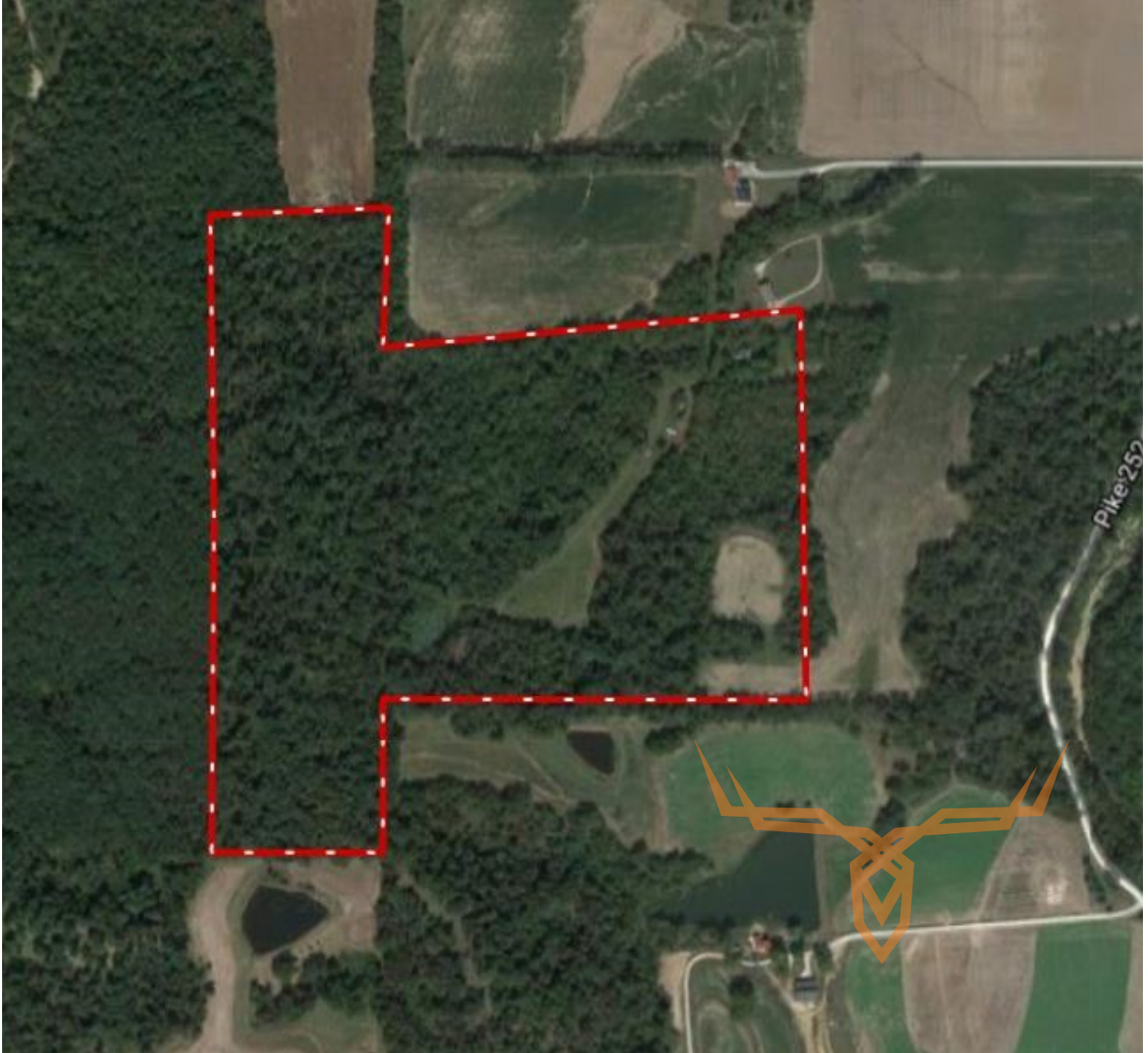




**T R O P H Y**  
PROPERTIES AND AUCTION  
LAND | RECREATIONAL | RESIDENTIAL

# Pike County Missouri 64 +/- Acre Hunting Farm for Sale

[www.TrophyPA.com](http://www.TrophyPA.com) • (855) 573-5263 • [leads@trophy.com](mailto:leads@trophy.com)



**TAXES:** \$175

**TAX YEAR:** 2016